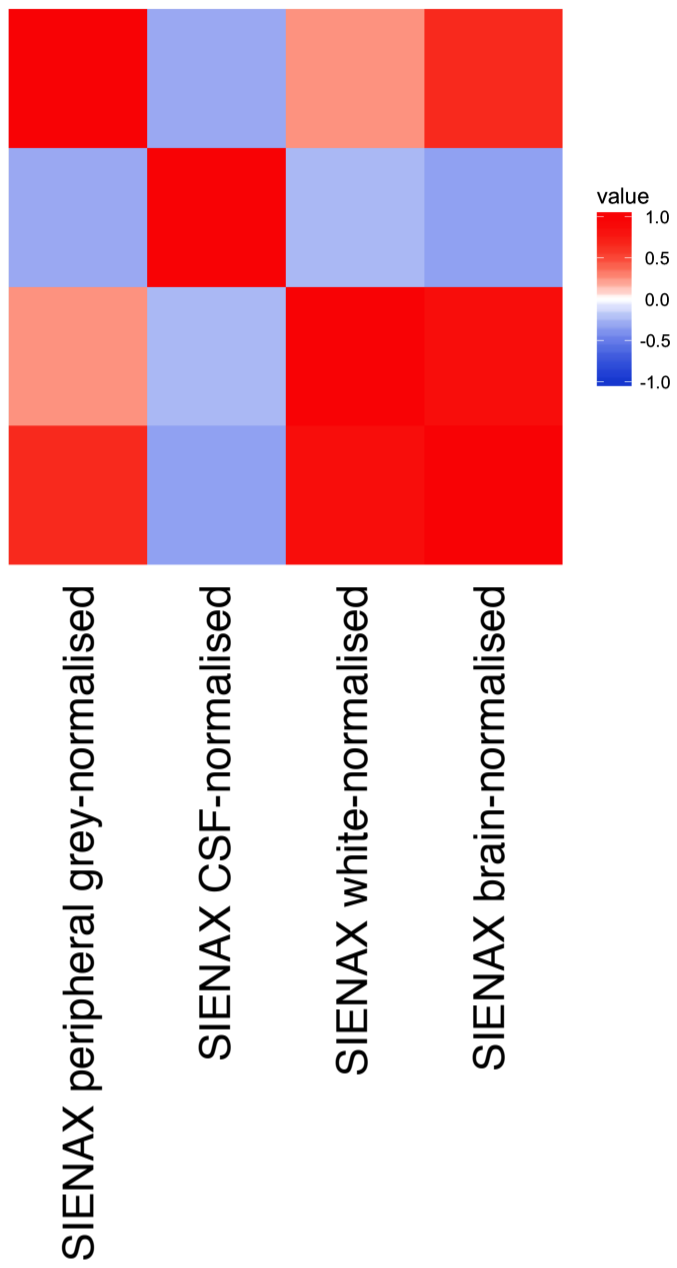


Supplementary Figure 3

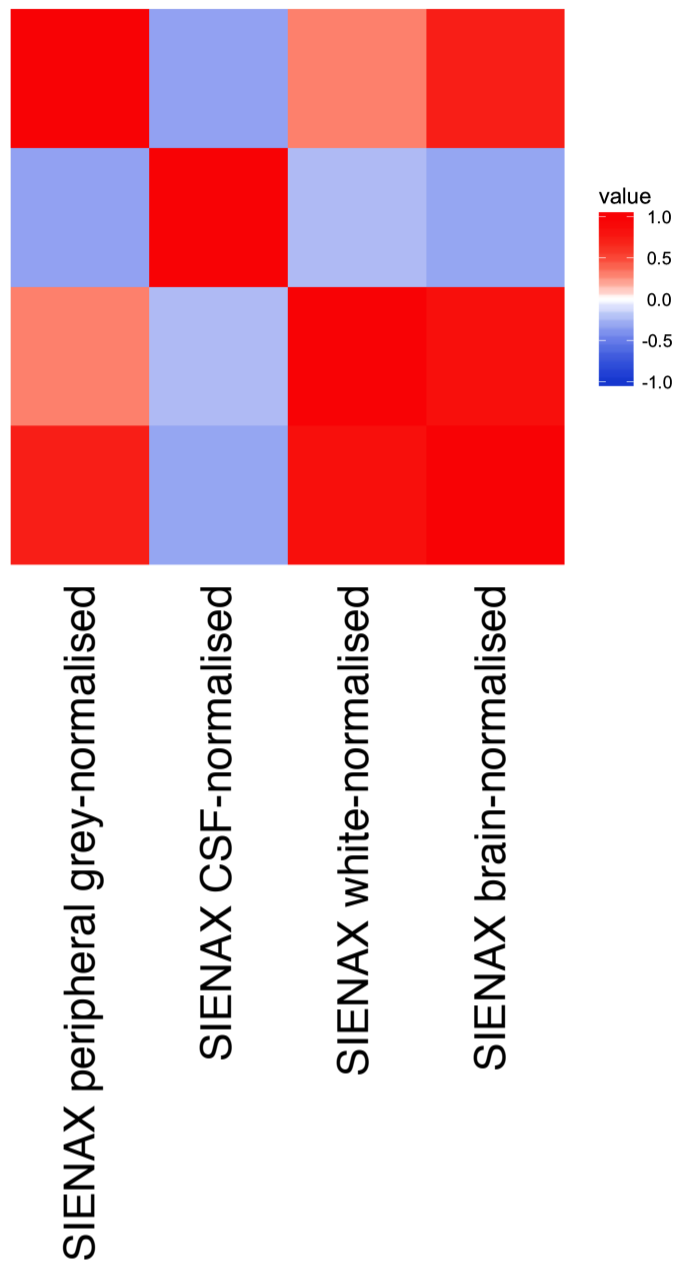
Each of the subsequent pages shows the estimated genetic correlation matrix (left) and the raw phenotypic correlation matrix for different subsets of IDPs. The genetic correlation matrices were calculated using the multi-trait mixed model approach described in the main text using the SBAT software. In some cases, phenotypes were pruned to remove pairs of IDPs with raw correlation greater than 0.9. The intention of these plots is to provide an overview of the levels of raw and genetic correlations that exist between the different IDPs.

T1 - global volumes

Genetic correlation

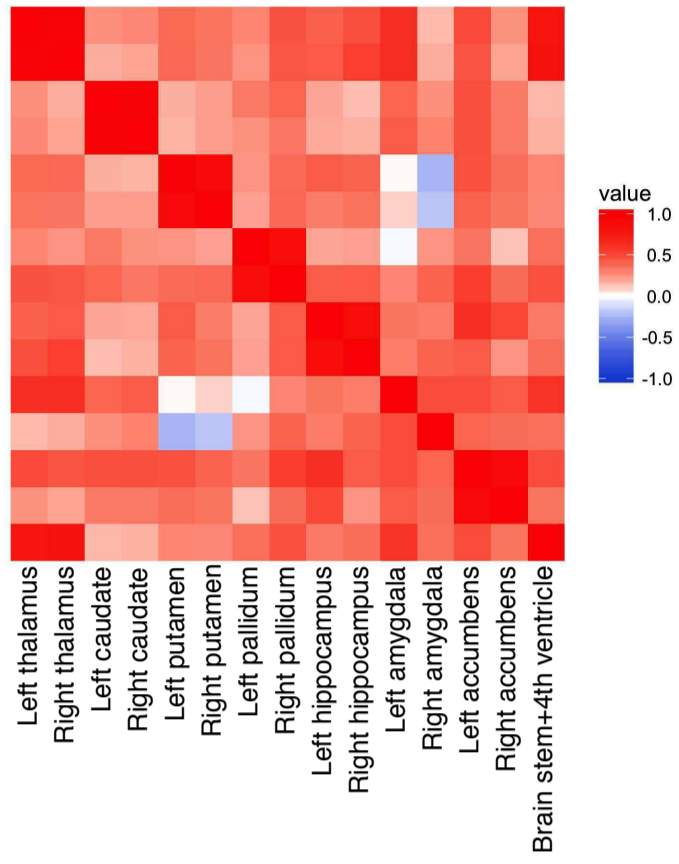


Phenotypic correlation

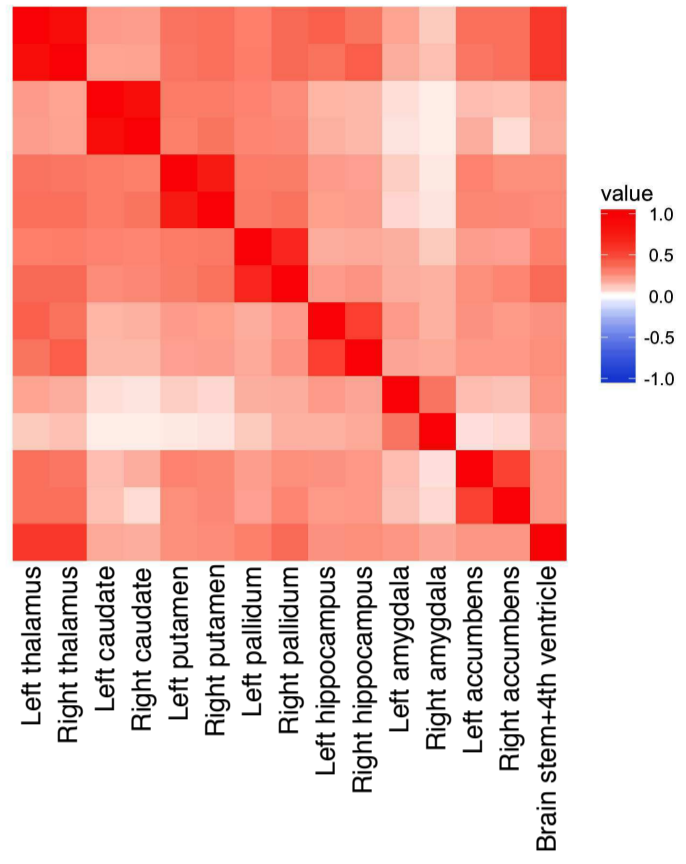


T1 - sub-cortical volumes

Genetic correlation

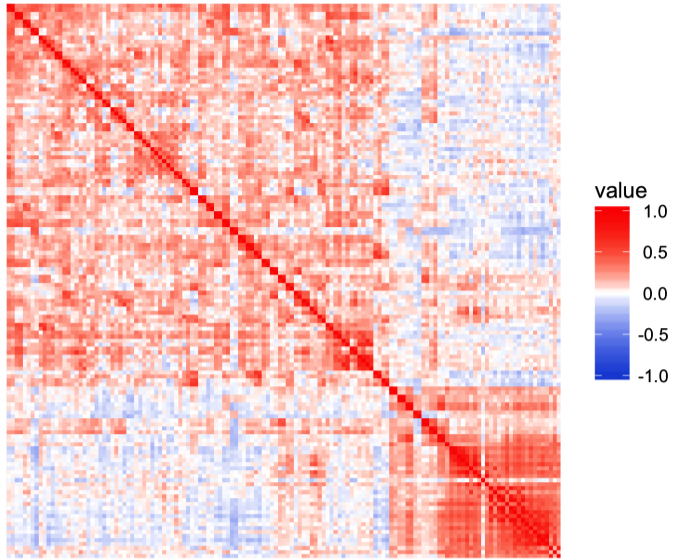


Phenotypic correlation

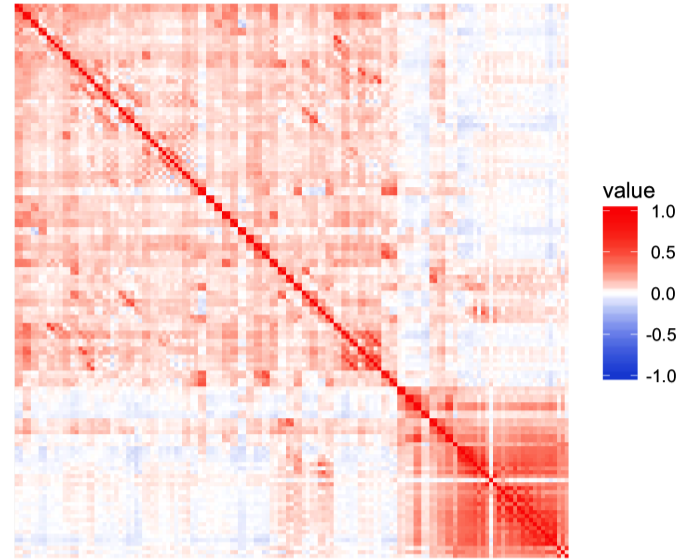


T1 - Cortex ROIs

Genetic correlation

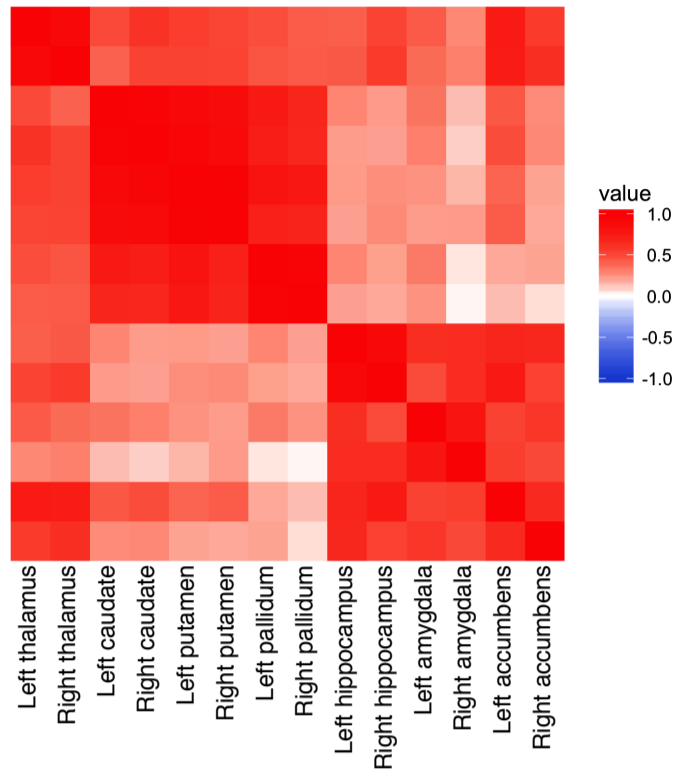


Phenotypic correlation

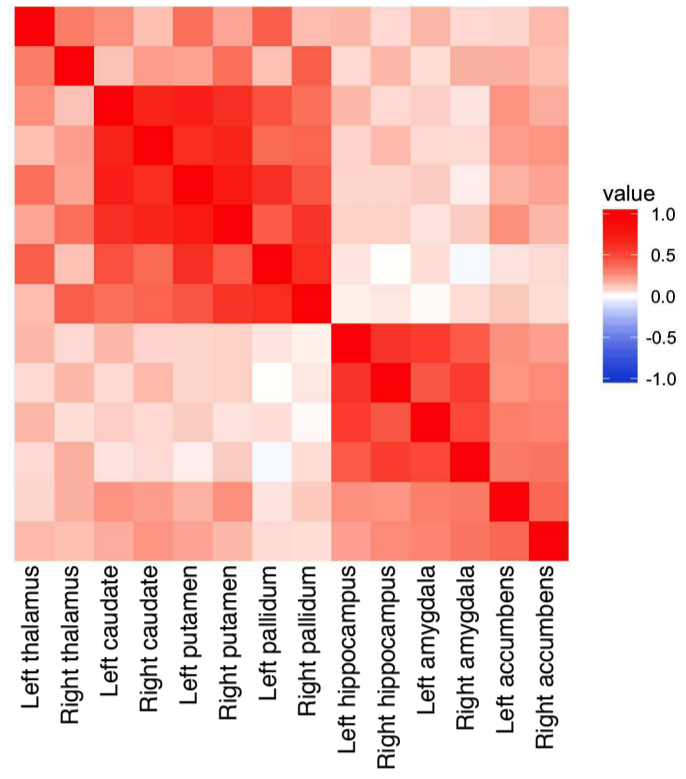


SWI T2* sub-cortical

Genetic correlation

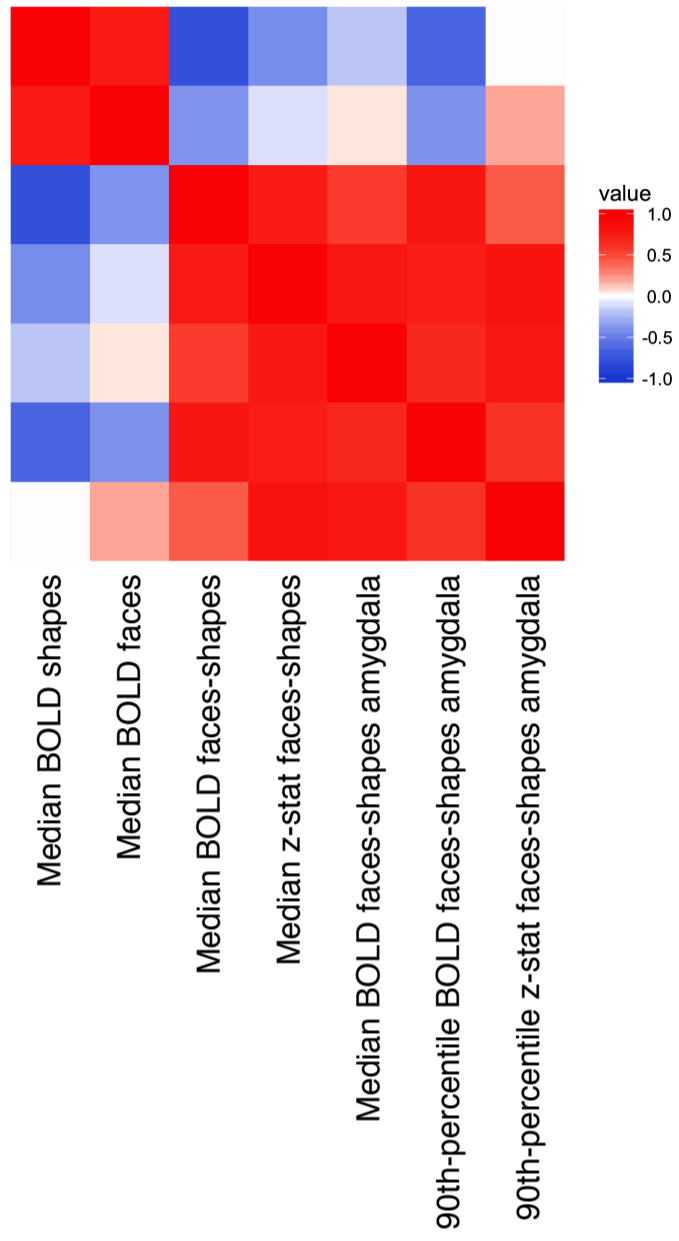


Phenotypic correlation

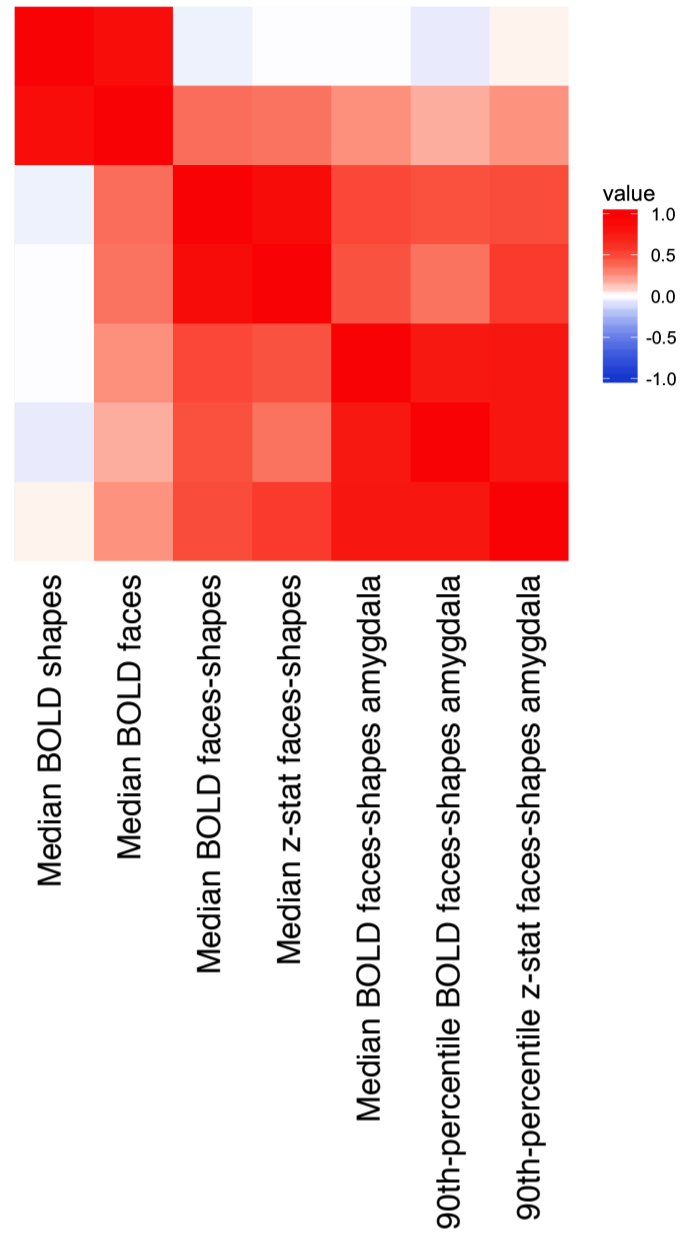


task fMRI

Genetic correlation

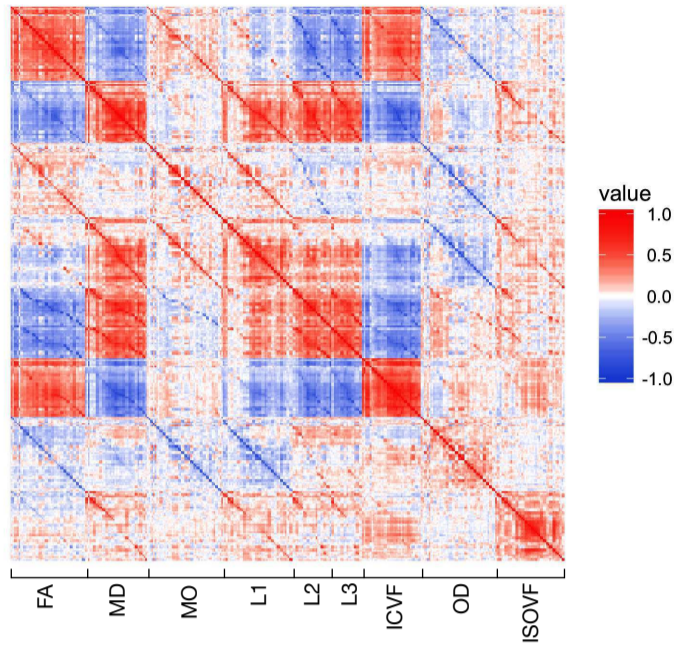


Phenotypic correlation

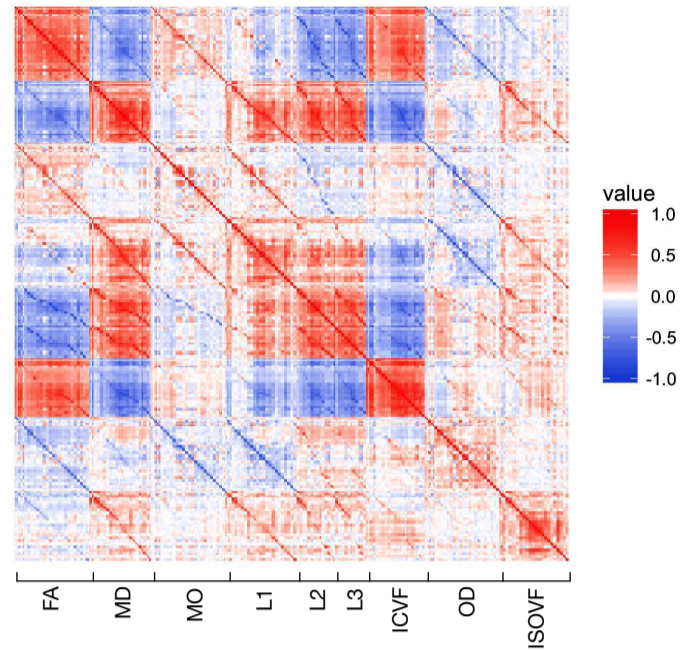


Diffusion MRI - TBSS

Genetic correlation

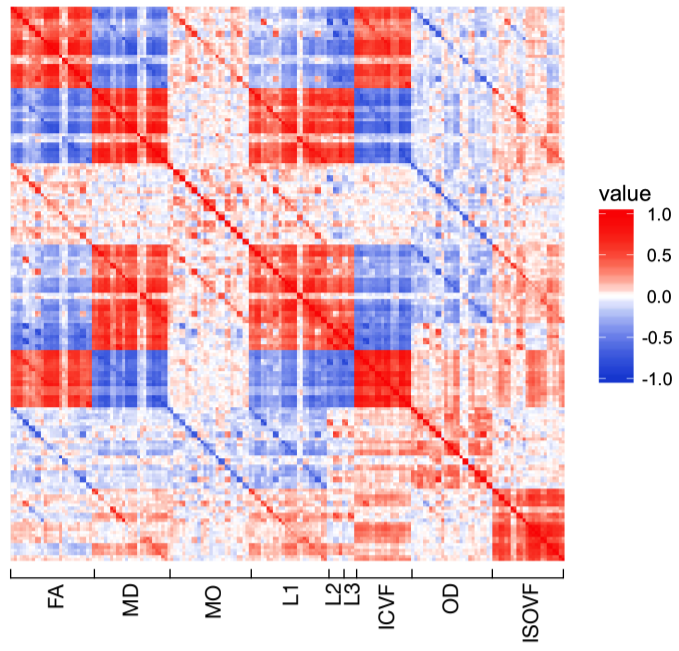


Phenotypic correlation

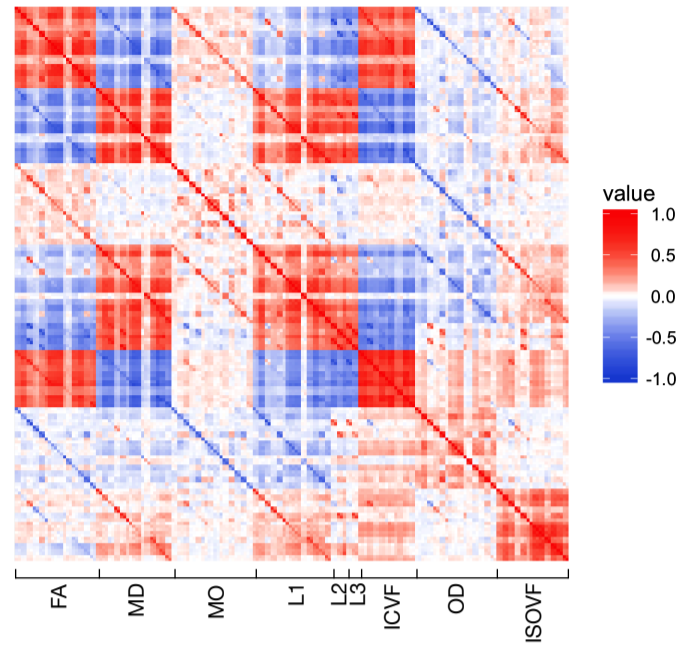


Diffusion MRI - ProbtrackX

Genetic correlation



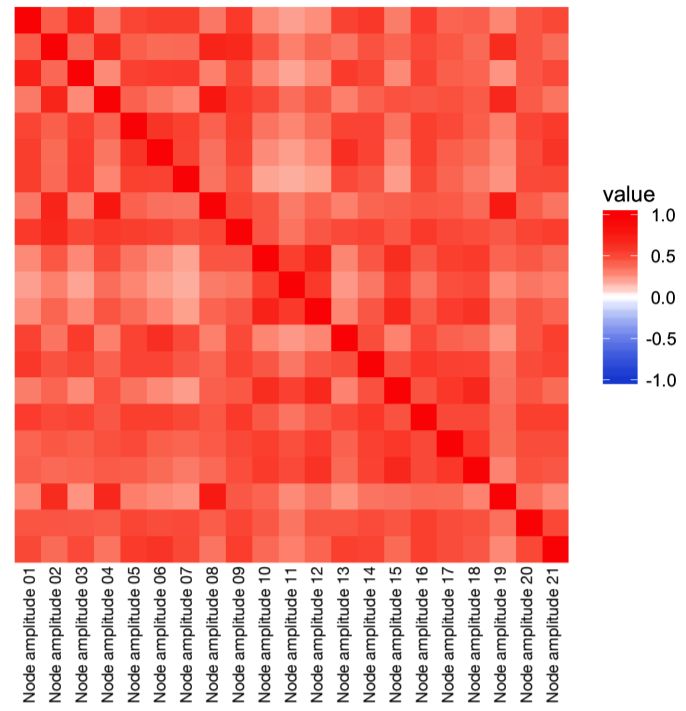
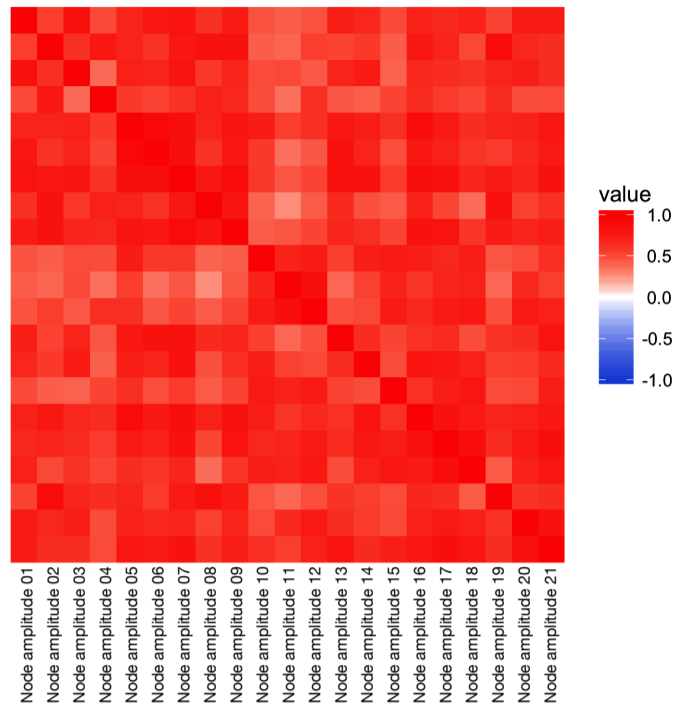
Phenotypic correlation



resting fMRI - parcellation25 amplitudes

Genetic correlation

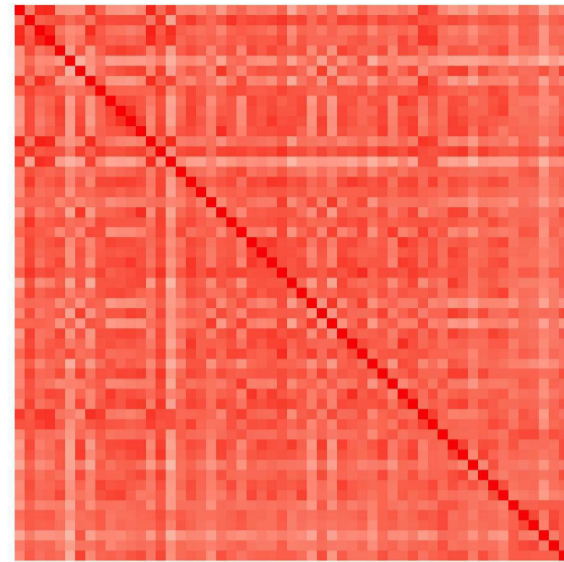
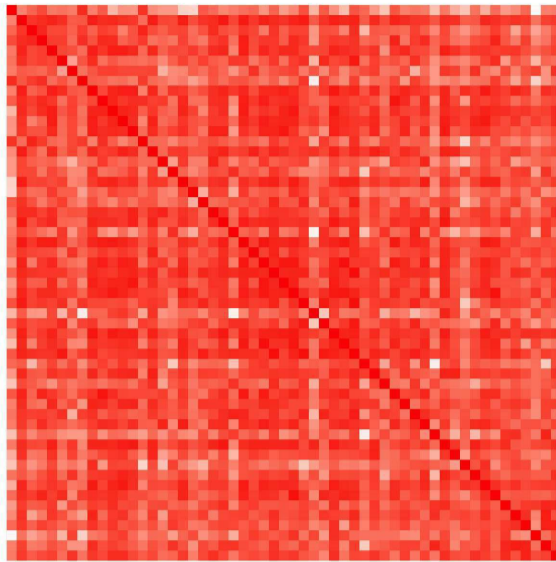
Phenotypic correlation



resting fMRI - parcellation100 amplitudes

Genetic correlation

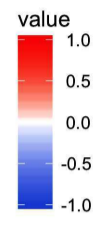
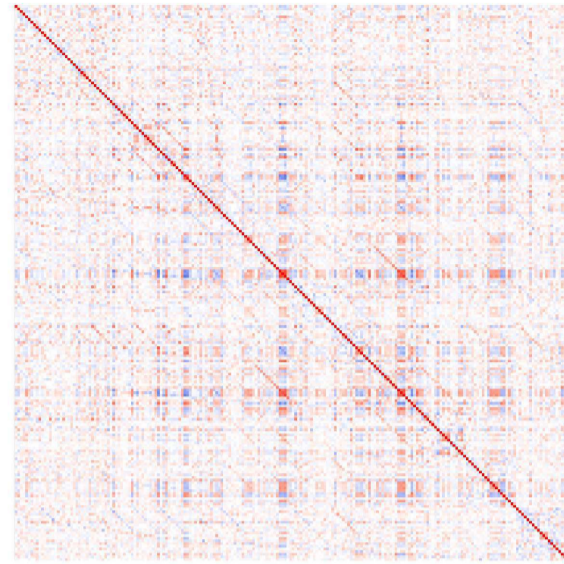
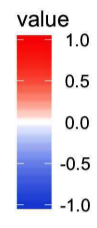
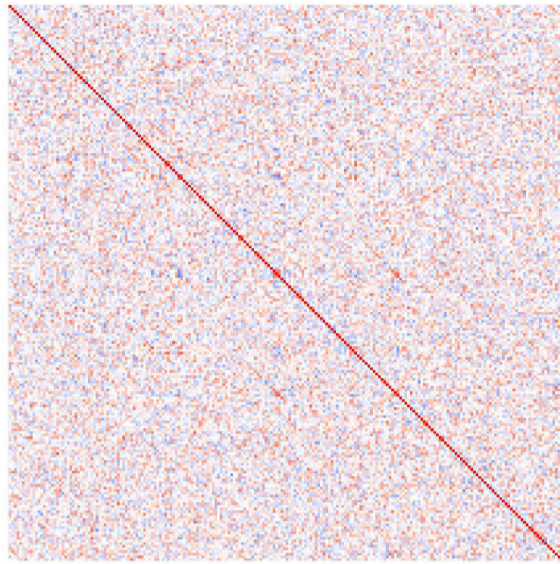
Phenotypic correlation



resting fMRI - parcellation25 edges

Genetic correlation

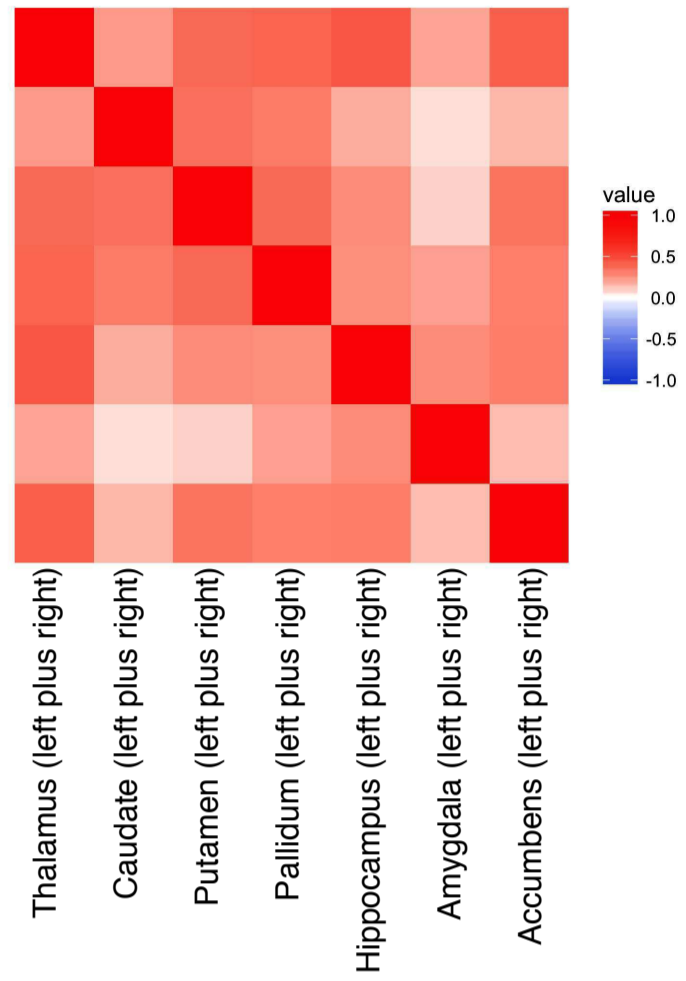
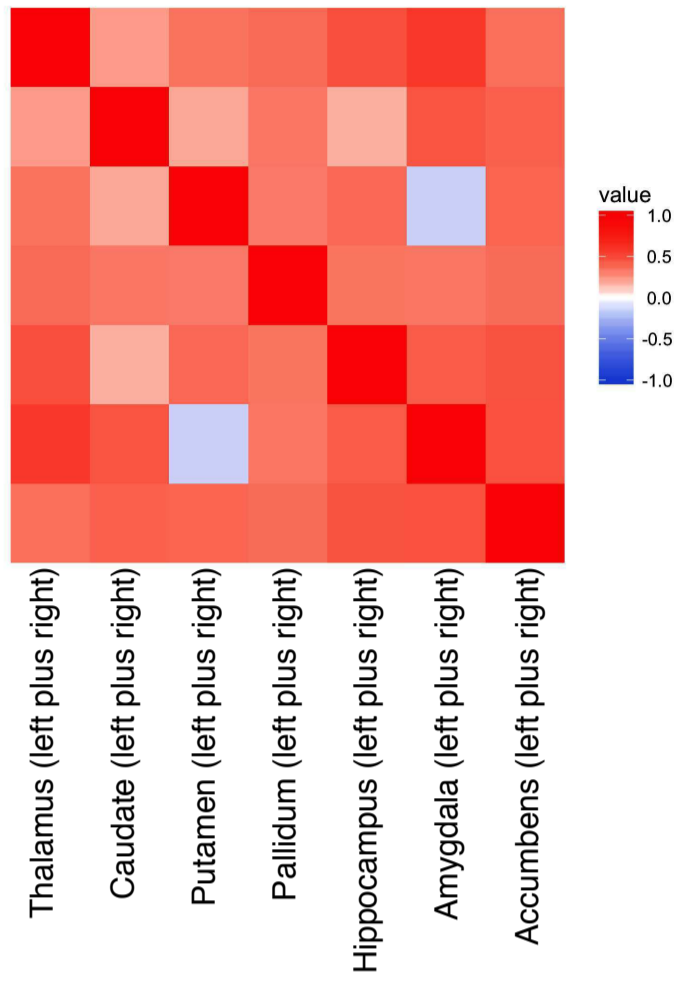
Phenotypic correlation



T1 - sub-cortical volumes L+R

Genetic correlation

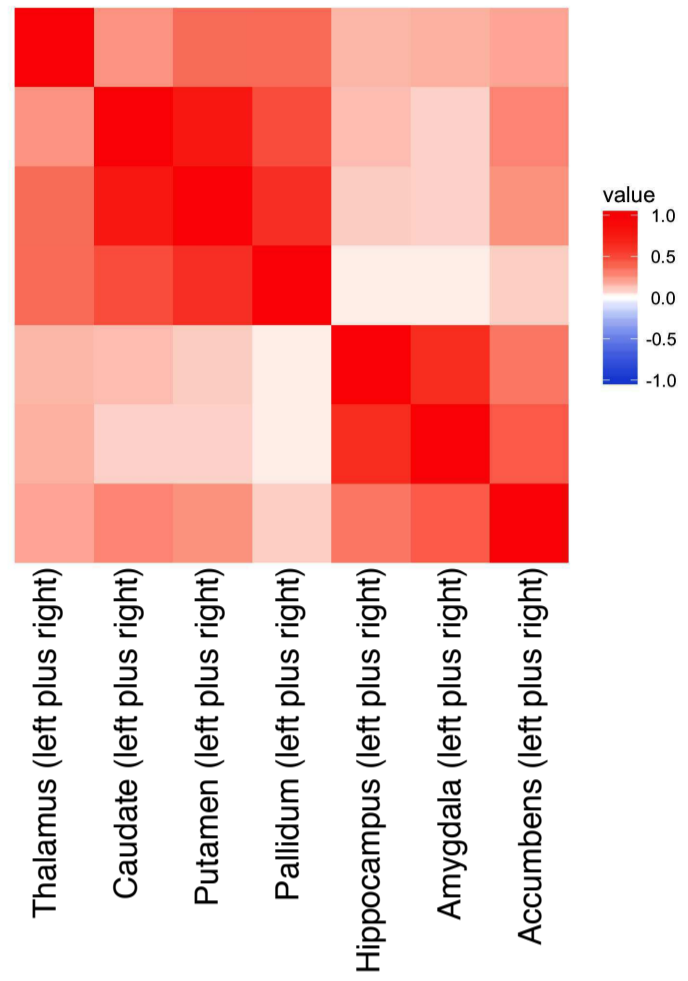
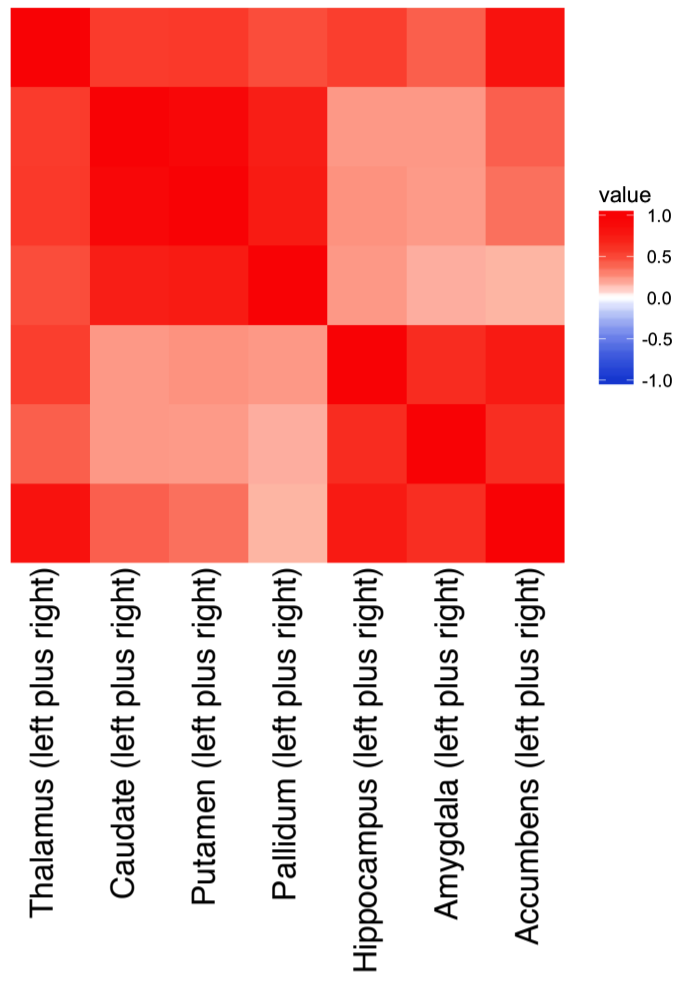
Phenotypic correlation



SWI T2* sub-cortical L+R

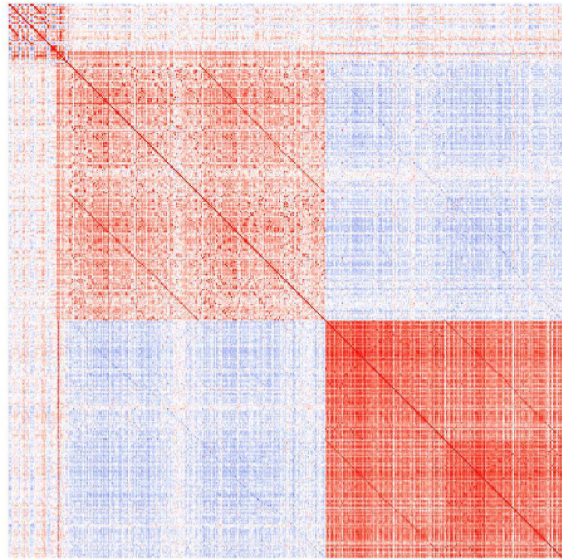
Genetic correlation

Phenotypic correlation

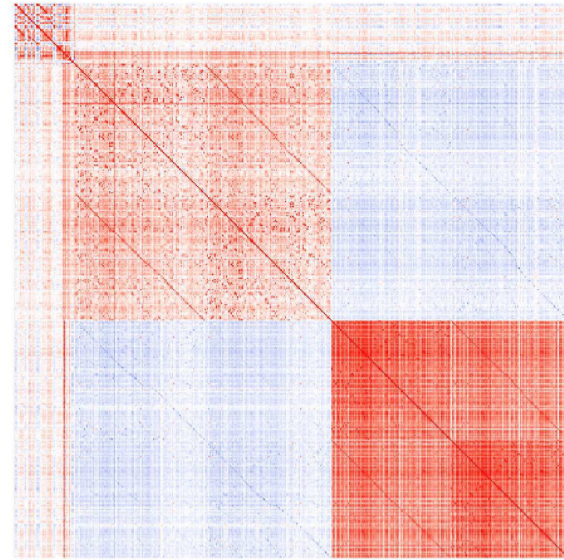


FreeSurfer

Genetic correlation

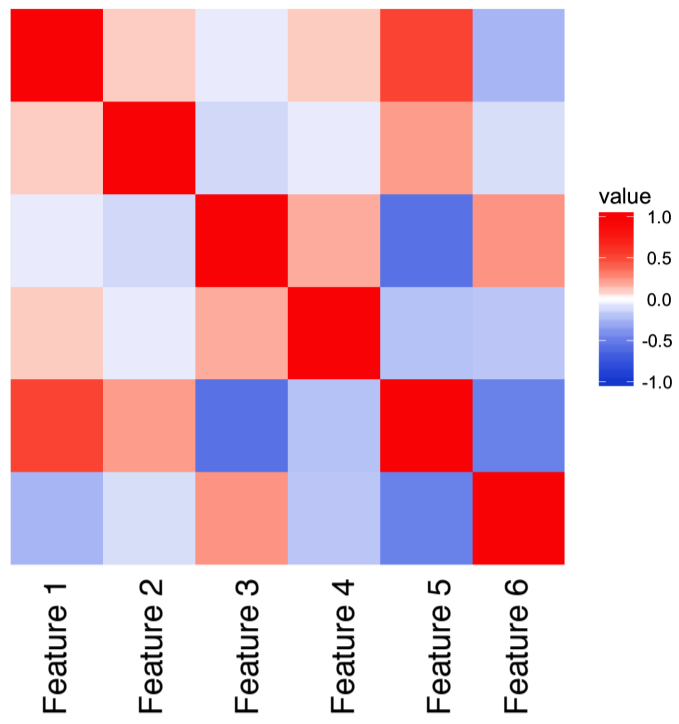


Phenotypic correlation



resting fMRI - ICA features

Genetic correlation



Phenotypic correlation

