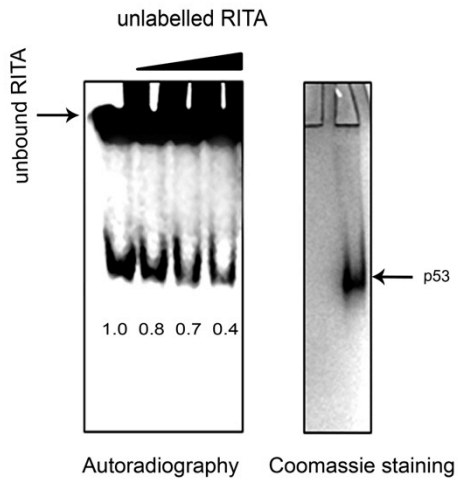
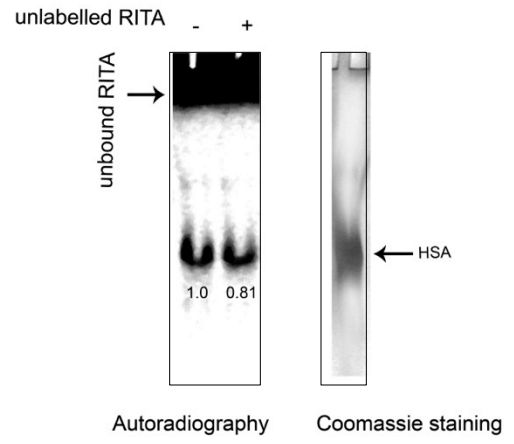


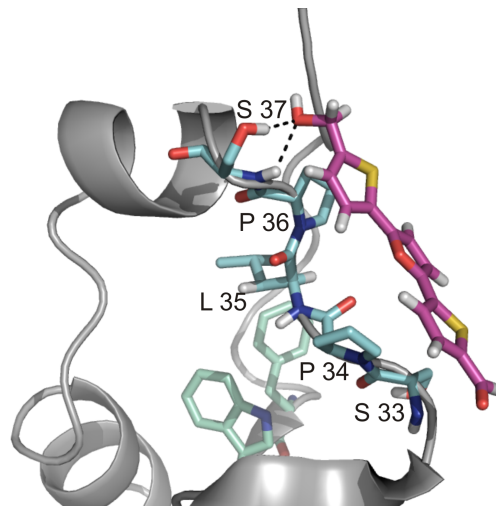
A.



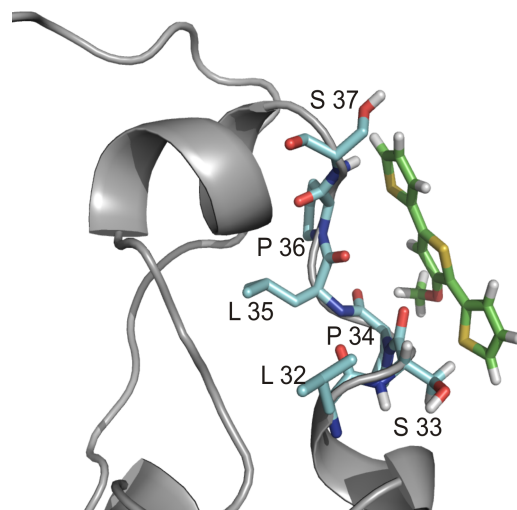
B.

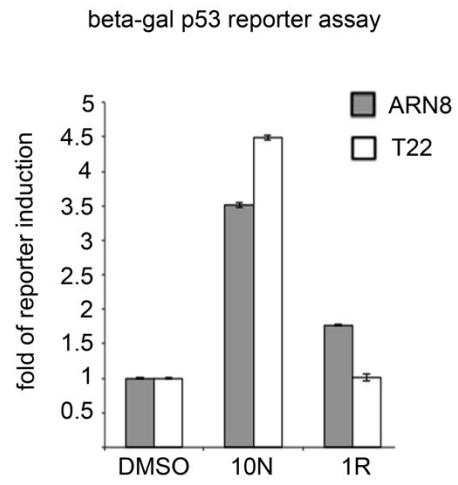


A.

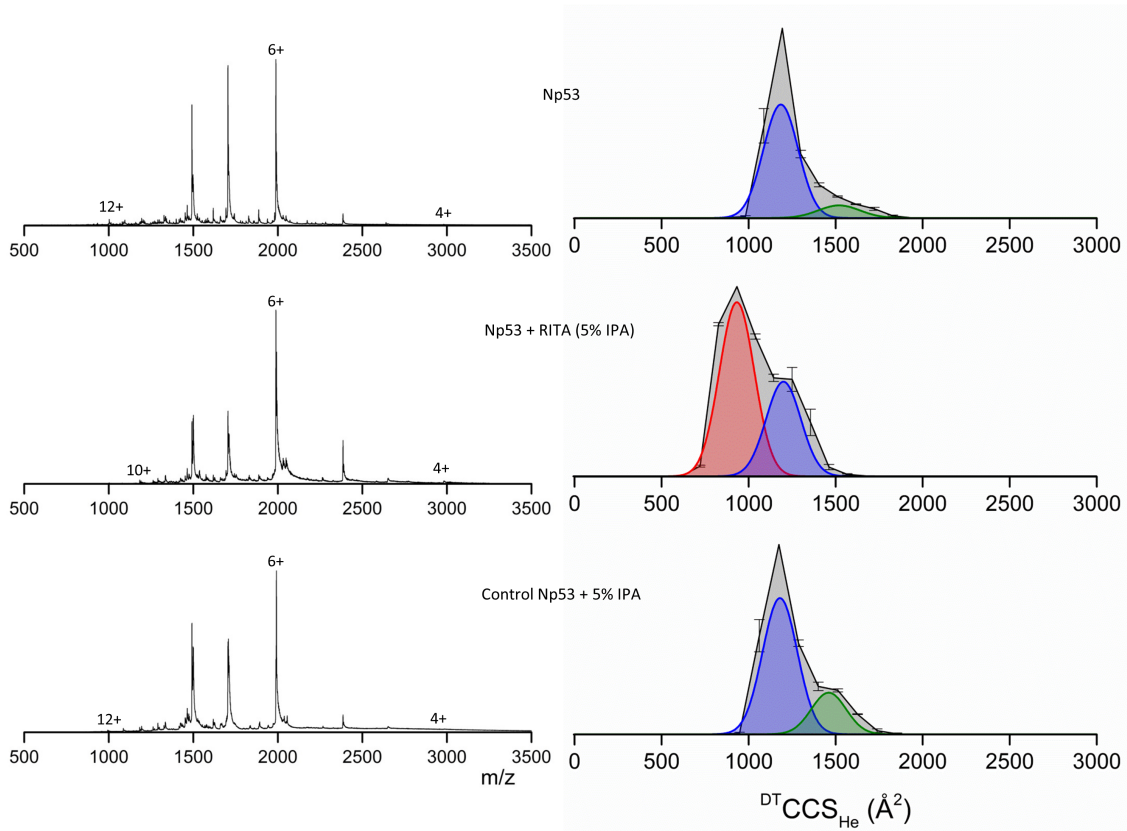


B.

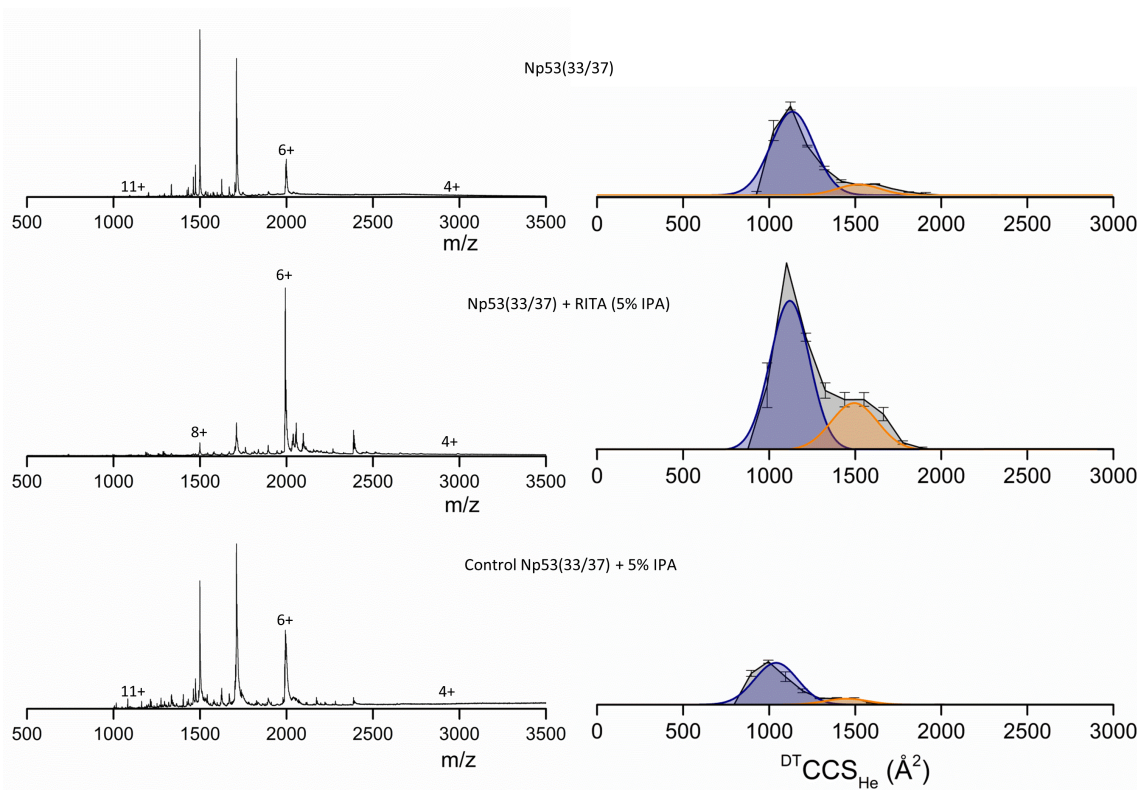




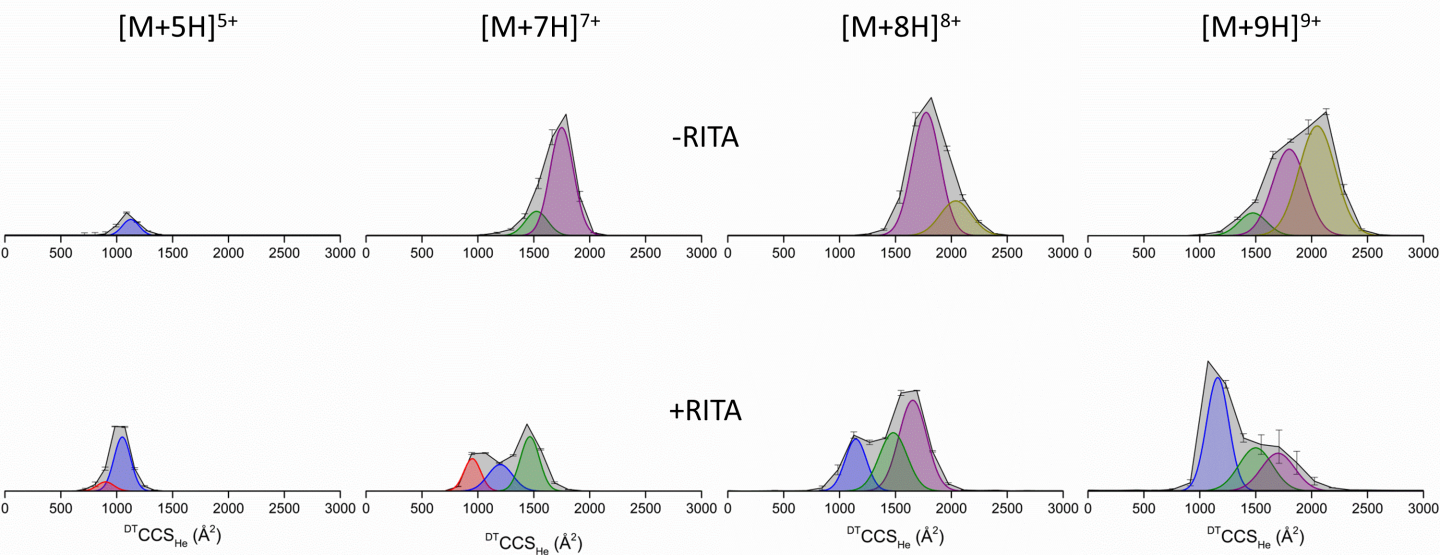
A.



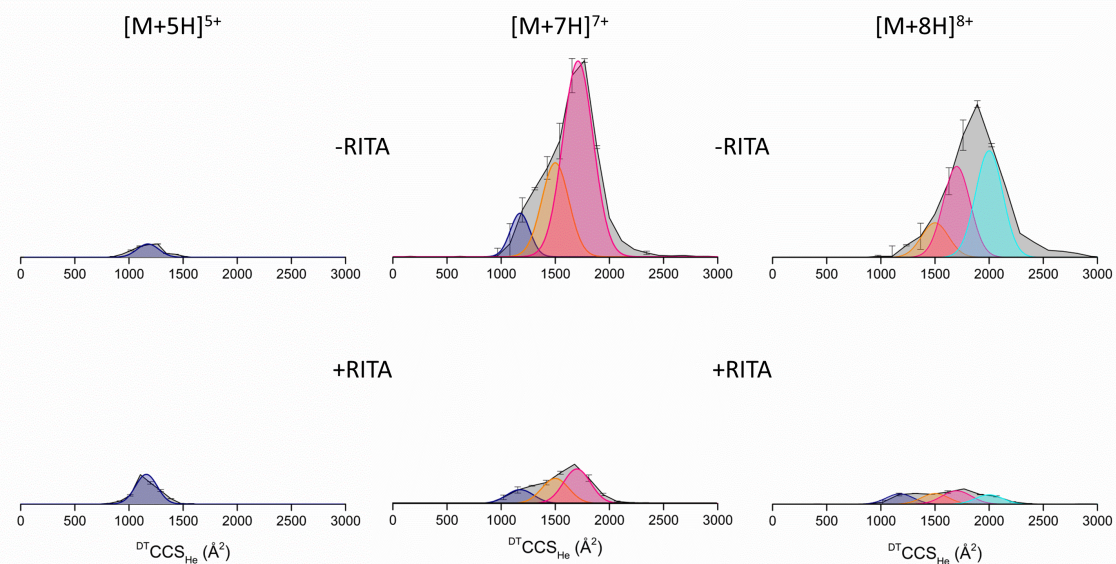
B.

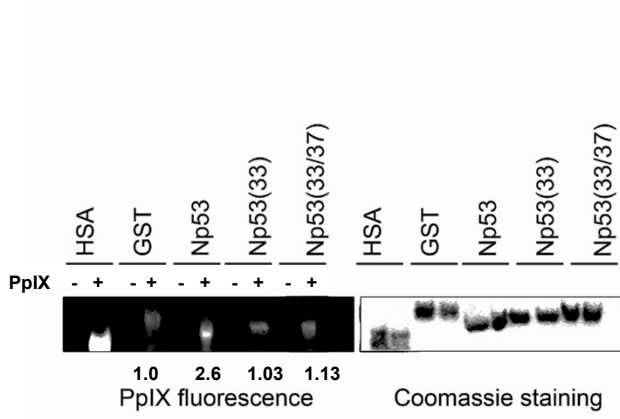


A.



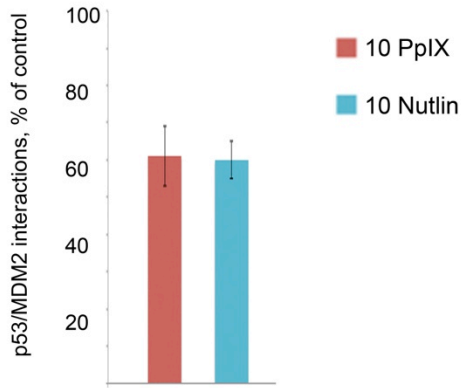
B.





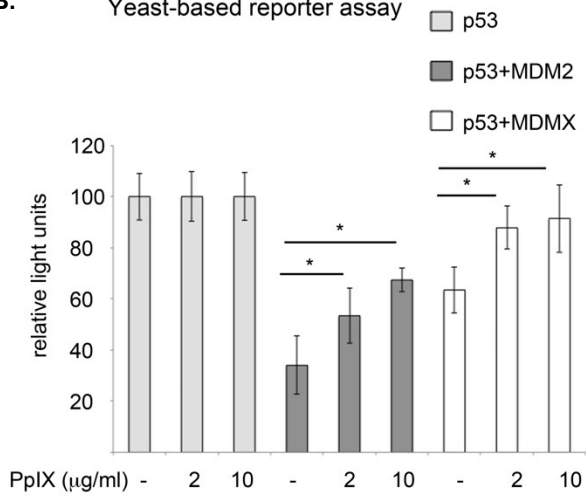
A.

F2H assay to assess p53/MDM2 interaction in cells

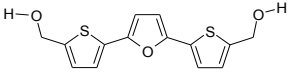
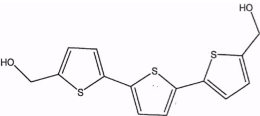
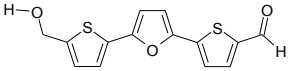
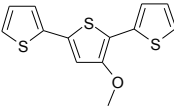
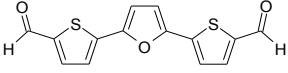
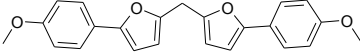
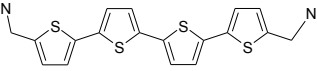
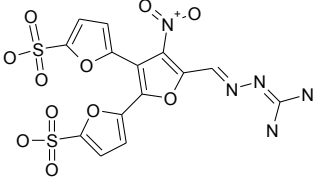
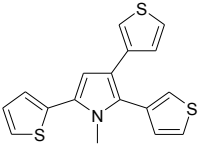
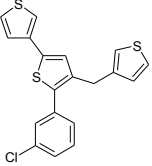
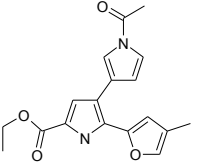
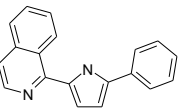


B.

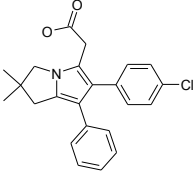
Yeast-based reporter assay



Structural analogs of RITA and their biological activities

Lp.	ID	Structure	Active/inactive
1	RITA		Active (RITA)
2	LCTA-2081		Active
3	NSC672170		Active (lower than RITA)
4	NSC650973		Inactive
5	NSC629035		Inactive
6	NSC613590		Inactive
7	NSC691803		Inactive
8	NSC647123		Inactive
9	NSC657767		Inactive
10	NSC661061		Inactive
11	NSC694946		Inactive
12	NSC116644		Inactive

Functional analogs of RITA identified using chemoinformatics

	DRUG ID	DRUG NAME	STRUCTURE	TANIMOTO COEFFICIENT
1	DCL000302	LICOFELONE		0.730445
2	DCL000651	TAK-442		0.718800
3	DCL000306	BENZBROMARONE		0.655255
4	DCL000444	AVE0010		0.654472
5	DAP000792	RALOXIFENE		0.653526
6	DAP000115	ADAPALENE		0.652967
7	DAP000089	PROPRANOLOL		0.596243
8	DCL000615	R7204		0.589953
9	DAP000554	FLUVASTATIN		0.588334
10	DCL000100	DAP-81		0.580234
11	DAP000968	NAPROXEN		0.580234
12	DCL000835	HCV-796		0.554923
13	DAP000735	NABUMETONE		0.545487