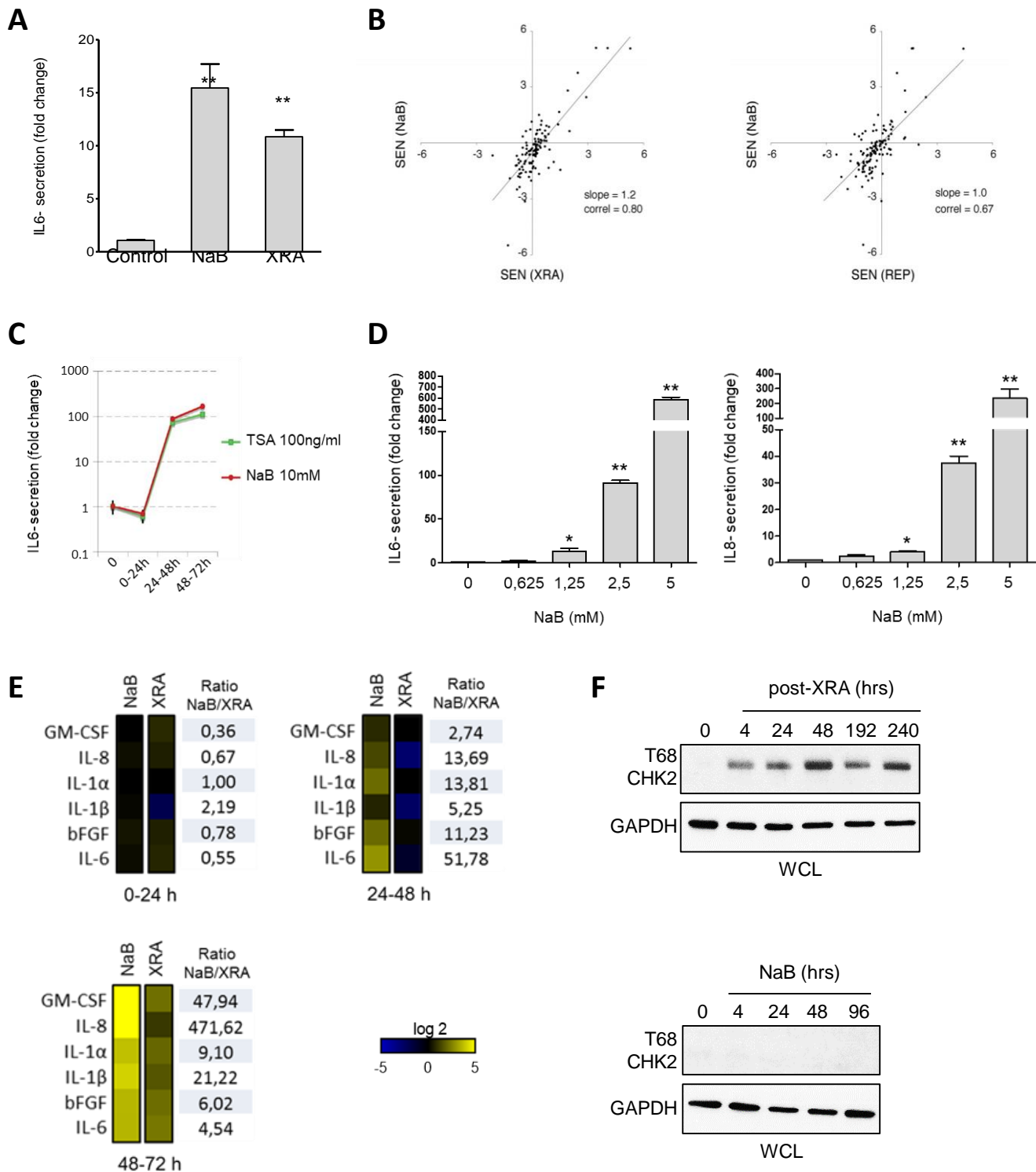
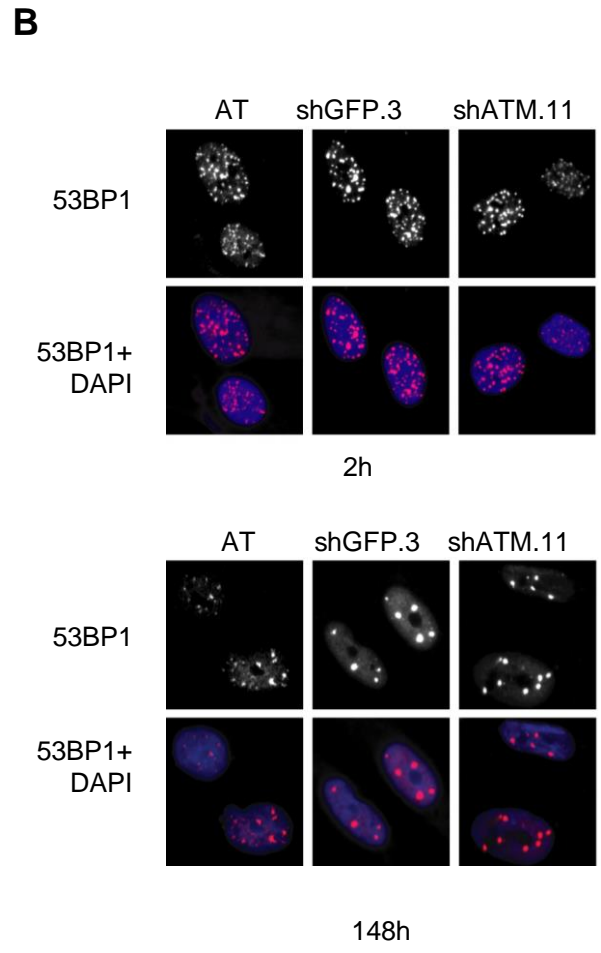
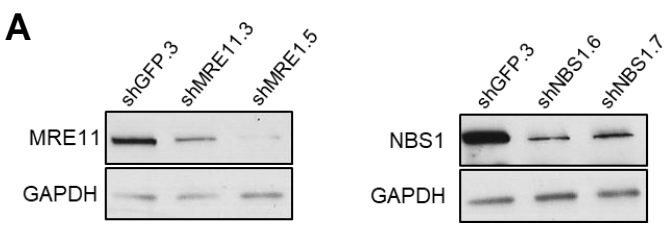


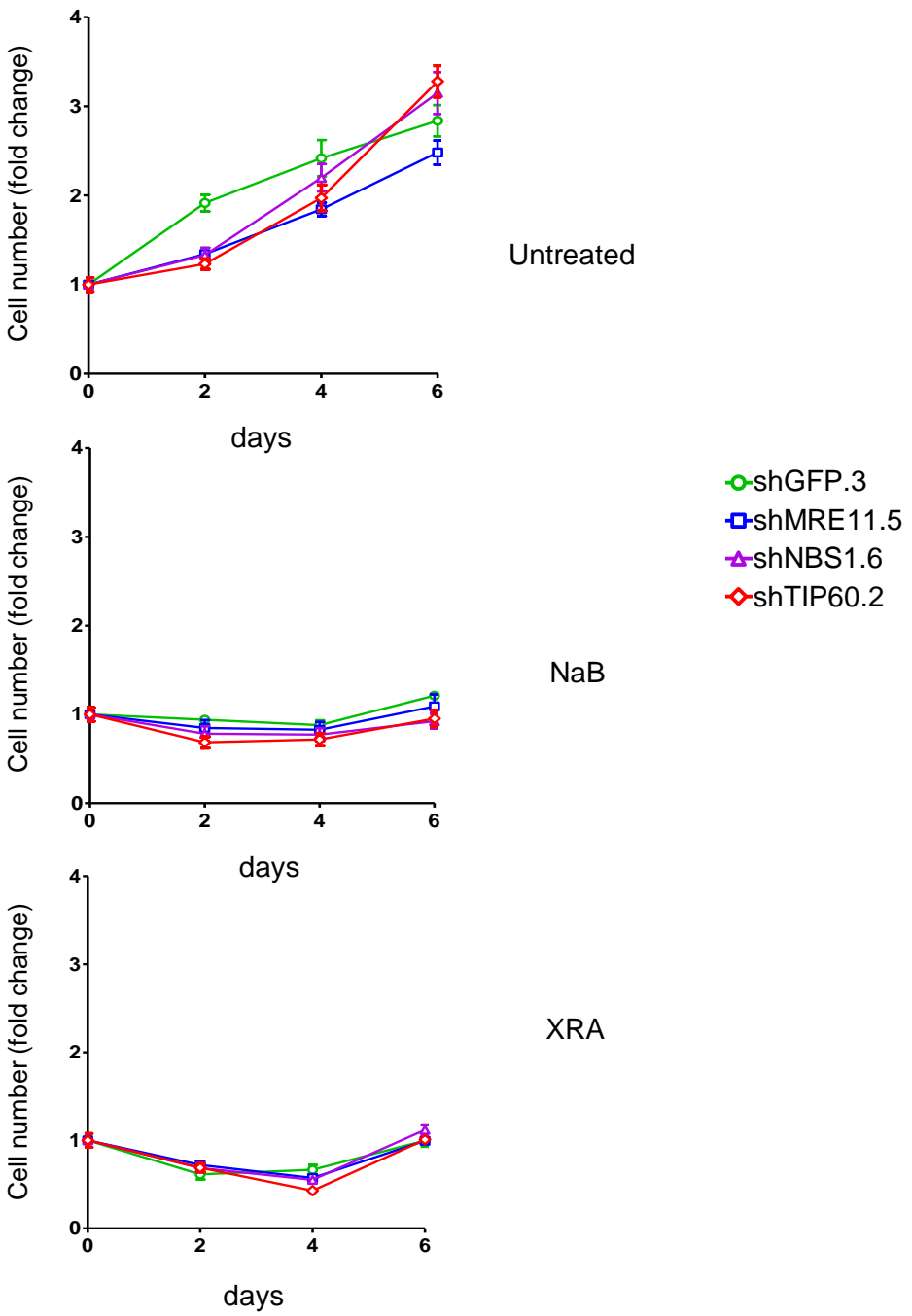
Supplementary figure S1



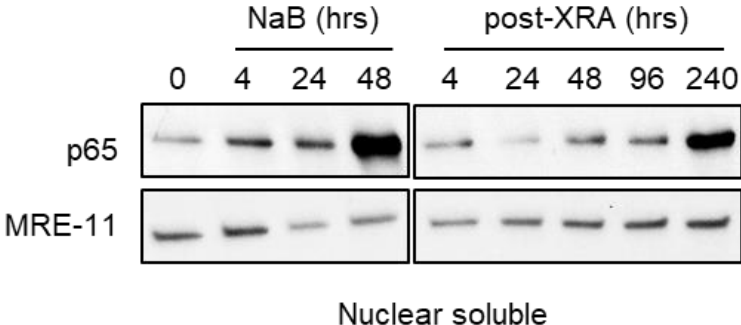
Supplementary figure S2



Supplementary figure S3



Supplementary figure S4



Supplementary table 1: list of primary antibodies

Antibodies	Compagny	Clone/Cat #	WB dilution	IF dilution
53BP1	Novus	NB100-305	1:2000	1:2000
γH2AX	Novus	NB100-384	1:2000	1:1000
PML	Santa cruz	N-19/SC-9862	-	1:500
ATM	AbCam	2C11A1/Ab78	1:2000	-
Phospho-ATM (S1981)	Cell signaling	10H11.E12/4526	1:2000	-
NBS1	Cell signaling	D6J5I	1:1000	-
MRE-11	Cell signaling	31H4	1:2000	-
Phospho CHK2 (T68)	Santa Cruz	SC-16297-R	1:500	-
HA	Santa Cruz	Y-11/SC-805	1:500	-
GCN5	Cell signaling	C26A10	1:1000	-
PCAF	Cell signaling	C14G9	1:1000	-
CBP	Cell signaling	D6C5	1:1000	-
p300	Cell signaling	BD Pharmingen	1:500	-
H2AK5Ac	Cell signaling	2576	1:2000	-
H2BK5Ac	Cell signaling	D5H1S	1:2000	-
H3K9Ac	Cell signaling	C5B11	1:2000	-
H3K18Ac	Cell signaling	D8Z5H	1:2000	-
H3K27Ac	Cell signaling	D5E4	1:2000	-
H4K5Ac	Cell signaling	D12B3	1:2000	-
H4K8Ac	Cell signaling	2594	1:2000	-
Histone H3	Cell signaling	D1H2	1:2000	-
Histone H4	Cell signaling	L64C1	1:4000	-
SP1	Sigma	HPA001853	1:1000	-
Tubulin	Santa cruz	DM1A/sc-32293	1:2000	-
GAPDH	Cell signaling	14C10	1:2000	-

Supplementary table 2 : list of primers for qPCR

Target		Sequences	Application
Tip60	Fw	5'-CACAGATCACCATCAATGAGATTA-3'	RT-qPCR
	Rv	5'-CTCTGACAGTGTGAGGATGTA-3'	
TRRAP	Fw	5'-CCGATCACACAAGAAATTCATC-3'	RT-qPCR
	Rv	5'-TCTCAAAGTAGCGGTTCACT-3'	
IL-6 promoter	Fw	5'-ACCCTCACCTCCAACAA-3'	CHiP (qPCR)
	Rv	5'-AGACATCTCCAGTCCTATATT-3'	
IL-8 promoter	Fw	5'-CCAAATTGTGGAGCTTCAGT-3'	CHiP (qPCR)
	Rv	5'-TTCCTTCCGGTGGTTTCTTC-3'	
RPL30	Fw	Cell signaling (#7014)	CHiP (qPCR)
	Rv	Cell signaling (#7015)	