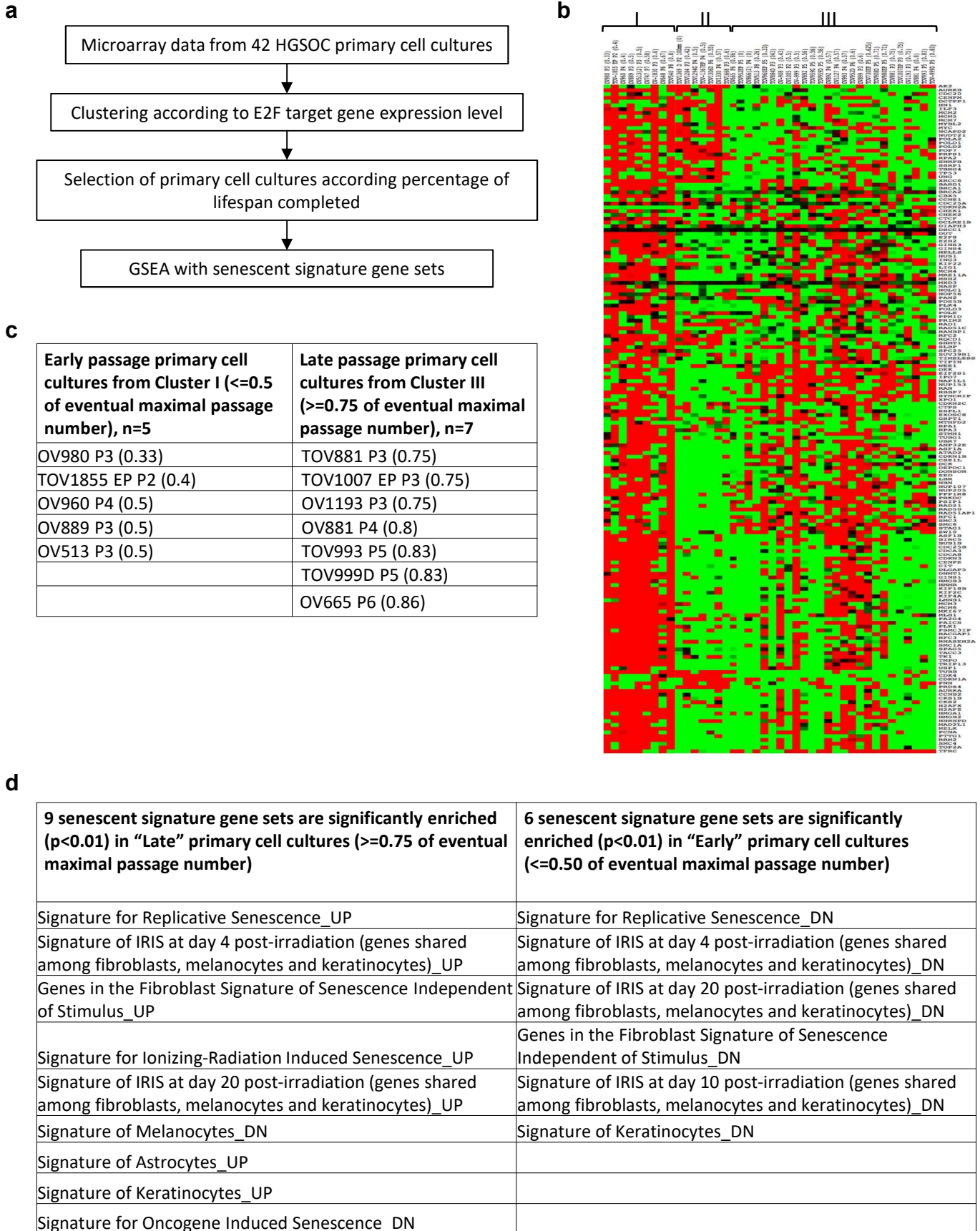
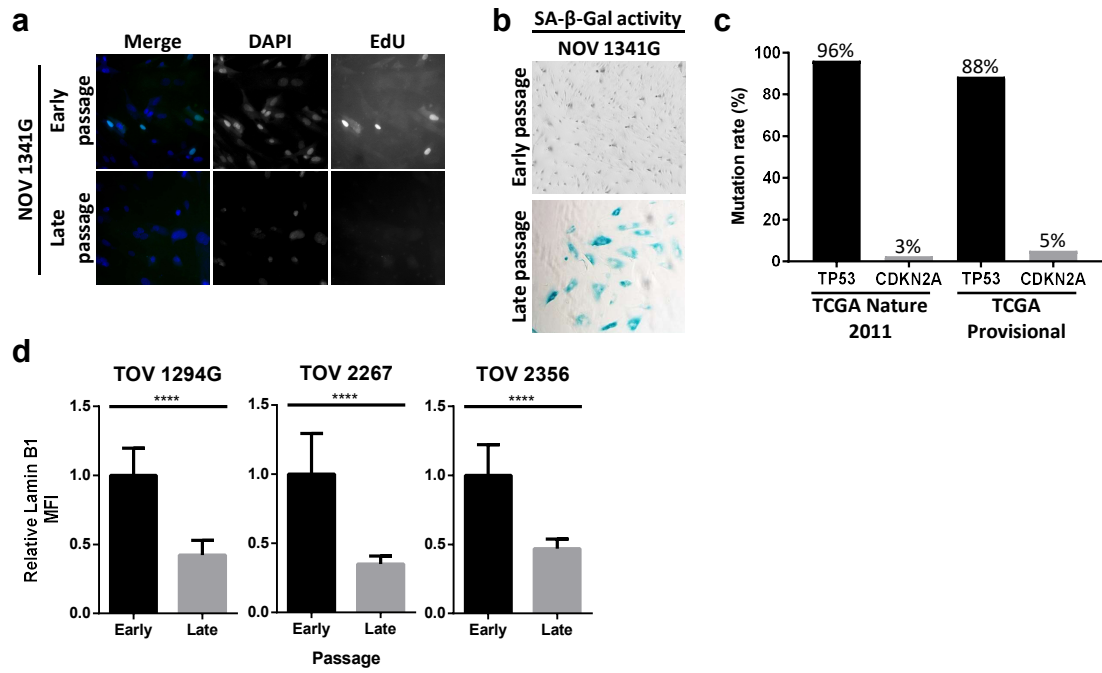


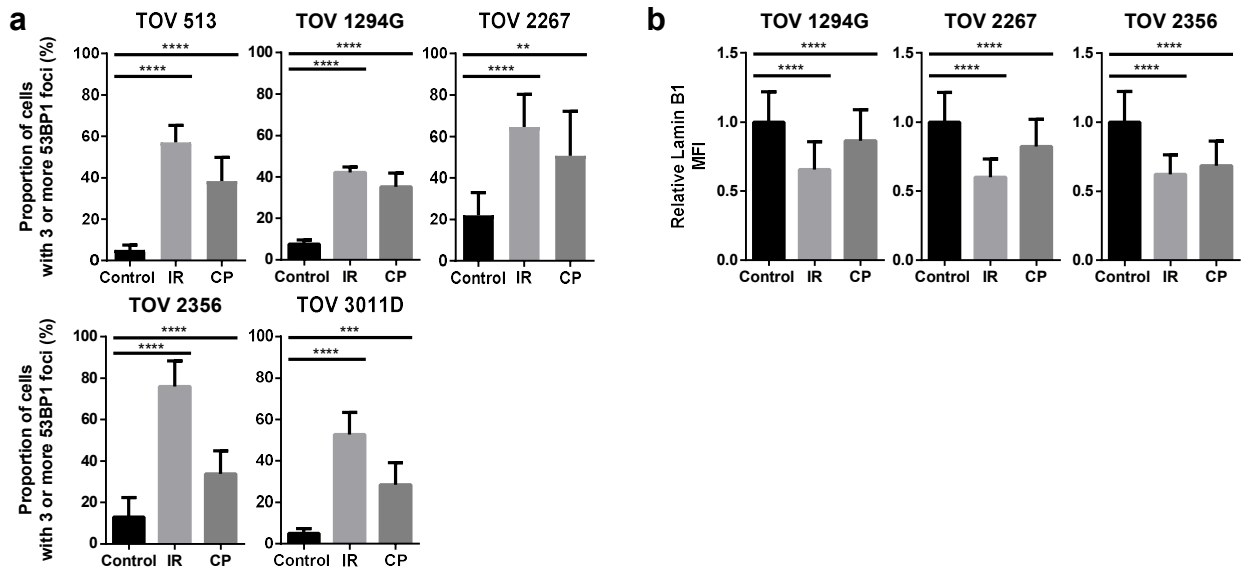
**Supplemental Figure 1: Workflow for HGSOC primary cell senescence transcriptome analysis.**



Supplemental Figure 2: HGSOC primary cultures undergo culture stress-induced senescence.



Supplemental Figure 3: HGSOC primary cultures undergo TIS in response to DNA damage and chemotherapy.



**Supplemental Figure 4: Clinical characteristics of the patients in the pre- and post-chemotherapy HGSOc cohort used to construct the tissue microarray.**

**a**

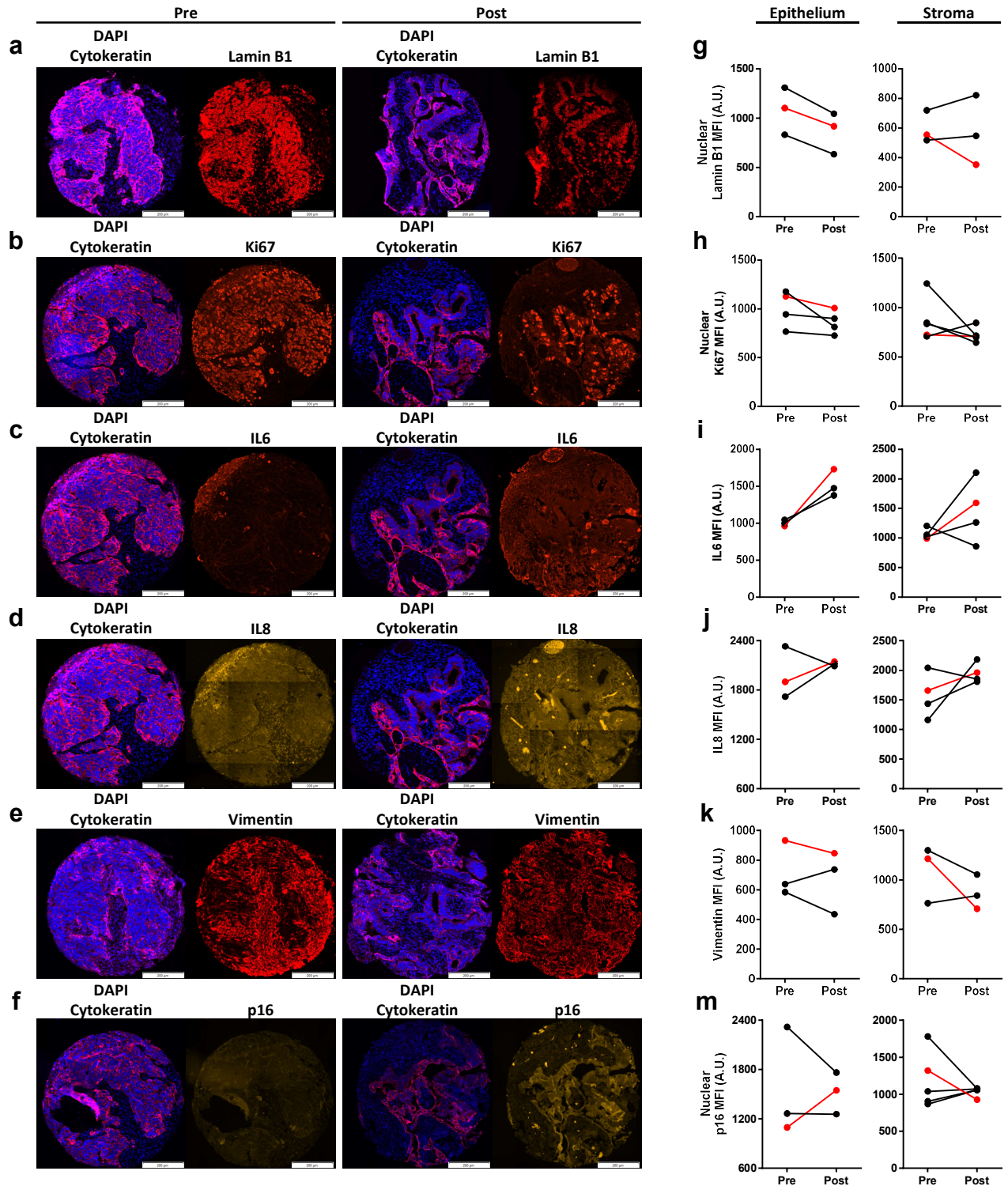
|  | Total<br>n=148 | Pre-chemo<br>n=76<br>Mean (SD) | Post-chemo<br>n=72 |
|--|----------------|--------------------------------|--------------------|
| Age at Diagnosis (years)                               | 60.21 (9.61)   | 60.54 (9.70)                   | 59.86 (9.56)       |
|  |                | Median (SD)                    |                    |
| Follow up (months)                                     | 32.00 (35.286) | 46.50 (40.03)                  | 25.50 (27.12)      |
|  |                | n (%)                          |                    |
| Disease-specific vital status within 5 years follow-up |                |                                |                    |
| Alive  | 65 (43.9 %)    | 35 (46.1 %)                    | 30 (41.7 %)        |
| Deceased   | 83 (56.1 %)    | 41 (53.9 %)                    | 42 (58.3 %)        |
| FIGO stage at presentation                             |                |                                |                    |
| 1  | 2 (1.4 %)      | 2 (2.6 %)                      | 0 (0.0 %)          |
| 2  | 7 (4.7 %)      | 6 (7.9 %)                      | 1 (1.4 %)          |
| 3  | 118 (79.7 %)   | 60 (78.9 %)                    | 58 (80.6 %)        |
| 4  | 19 (12.8 %)    | 8 (10.5 %)                     | 11 (15.3 %)        |
| Unknown  | 2 (1.4 %)      | 0 (0.0 %)                      | 2 (2.8 %)          |
| Residual Disease After Surgery                         |                |                                |                    |
| None   | 33 (22.3 %)    | 12 (15.8 %)                    | 21 (29.2 %)        |
| 1 cm or less   | 37 (25.0 %)    | 19 (25.0 %)                    | 28 (25.0 %)        |
| 1-2 cm   | 19 (12.8 %)    | 11 (14.5 %)                    | 8 (11.1 %)         |
| 2 cm and greater                                       | 33 (22.3 %)    | 26 (34.2 %)                    | 7 (9.7 %)          |
| Milliary   | 7 (4.7 %)      | 3 (3.9 %)                      | 4 (5.6 %)          |
| Unknown  | 19 (12.8 %)    | 5 (6.6 %)                      | 14 (19.4 %)        |

**b**

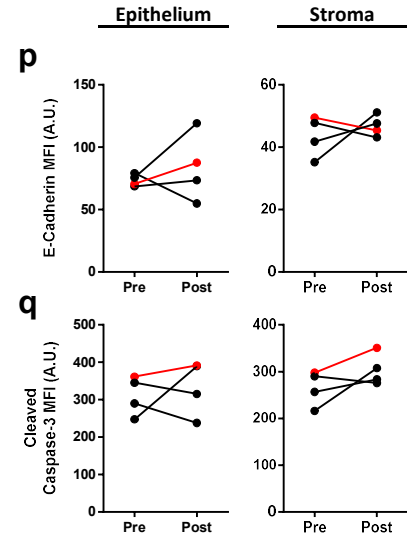
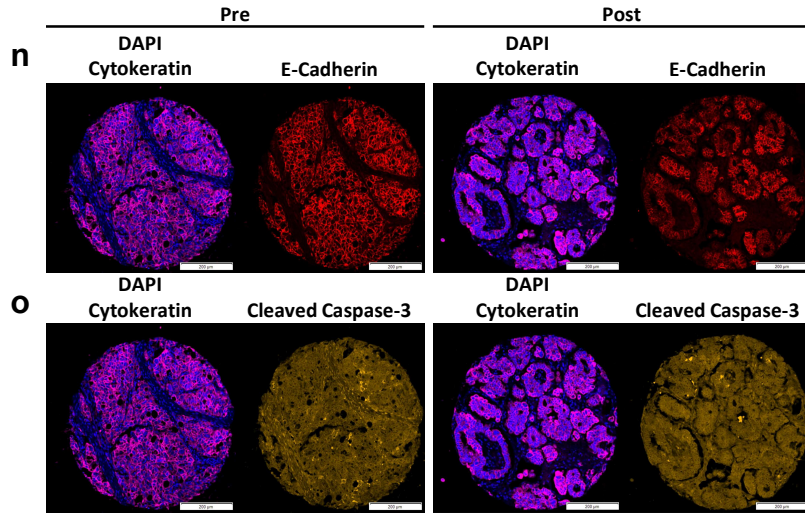
| Variable                       | Overall 5-year survival |                      |               |                 |                      |               |                 |                      |                |
|--------------------------------|-------------------------|----------------------|---------------|-----------------|----------------------|---------------|-----------------|----------------------|----------------|
|                                | Total                   |                      |               | Pre-chemo       |                      |               | Post-chemo      |                      |                |
|                                | HR <sup>a</sup>         | 95 % CI <sup>b</sup> | p-value       | HR <sup>a</sup> | 95 % CI <sup>b</sup> | p-value       | HR <sup>a</sup> | 95 % CI <sup>b</sup> | p-value        |
| Age at diagnosis               | 1.006                   | 0.982-1.031          | 0.613         | 1.009           | 0.971-1.048          | 0.649         | 1.008           | 0.977-1.039          | 0.620          |
| Residual disease after surgery |                         |                      | <b>0.0475</b> |                 |                      | 0.115         |                 |                      | <b>0.0119</b>  |
| 1 cm or less vs none           | 1.351                   | 0.637-2.865          | 0.433         | 2.495           | 0.518-12.02          | 0.254         | 1.111           | 0.458-2.694          | 0.816          |
| 1-2 cm vs none                 | 2.311                   | 1.035-5.161          | <b>0.0410</b> | 3.863           | 0.779-19.16          | 0.0981        | 2.837           | 1.051-7.655          | <b>0.0395</b>  |
| 2 cm and greater vs none       | 2.558                   | 1.224-5.348          | <b>0.0125</b> | 5.725           | 1.314-24.95          | <b>0.0202</b> | 2.381           | 0.730-7.769          | 0.151          |
| Milliary vs none               | 3.036                   | 0.965-9.546          | 0.0575        | 4.416           | 0.621-31.39          | 0.138         | 12.635          | 2.405-66.37          | <b>0.00273</b> |

<sup>a</sup>Hazard ratio (HR) estimated from Cox proportional hazard regression model. <sup>b</sup>Confidence interval of the estimated HR.

**Supplemental Figure 5: HGSOC tissues display senescence hallmarks following exposure to chemotherapy in patients.**



**Supplemental Figure 5 (cont'd): HGSOC tissues display senescence hallmarks following exposure to chemotherapy in patients.**



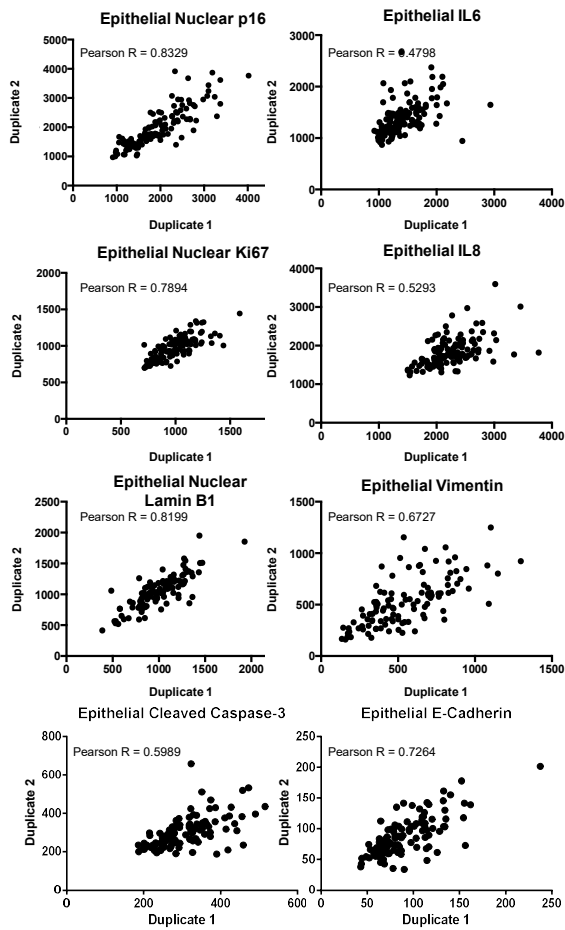
**Supplemental Figure 6: Senescence-associated marker levels in post-chemotherapy HGSOc tissues correlate with 5-year survival.**

**a**

| Marker                   | Epithelium                   |                               | Stroma                       |                               |
|--------------------------|------------------------------|-------------------------------|------------------------------|-------------------------------|
|                          | Variation after chemotherapy | Kaplan-Meier Log Rank p-value | Variation after chemotherapy | Kaplan-Meier Log Rank p-value |
| <b>p16</b>               | -                            | 0.0165 (H>L)                  | -                            | 0.442                         |
| <b>Ki67</b>              | ↓                            | 0.129 (L>H)                   | ↓                            | 0.0736 (H>L)                  |
| <b>Lamin B1</b>          | ↓                            | 0.0445 (L>H)                  | ↓                            | 0.823                         |
| <b>IL-6</b>              | ↑                            | 0.305                         | -                            | 0.243                         |
| <b>IL-8</b>              | -                            | 0.0520 (H>L)                  | ↑                            | 0.0617 (H>L)                  |
| <b>Vimentin</b>          | ↑                            | 0.141 (H>L)                   | -                            | 8.33 x 10 <sup>-4</sup> (L>H) |
| <b>E-Cadherin</b>        | ↑                            | 0.951                         | -                            | 0.0775 (H>L)                  |
| <b>Cleaved Caspase-3</b> | -                            | 0.562                         | ↑                            | 0.102 (H>L)                   |

Supplemental Figure 7 : MFI correlations between duplicate cores.

a



b

