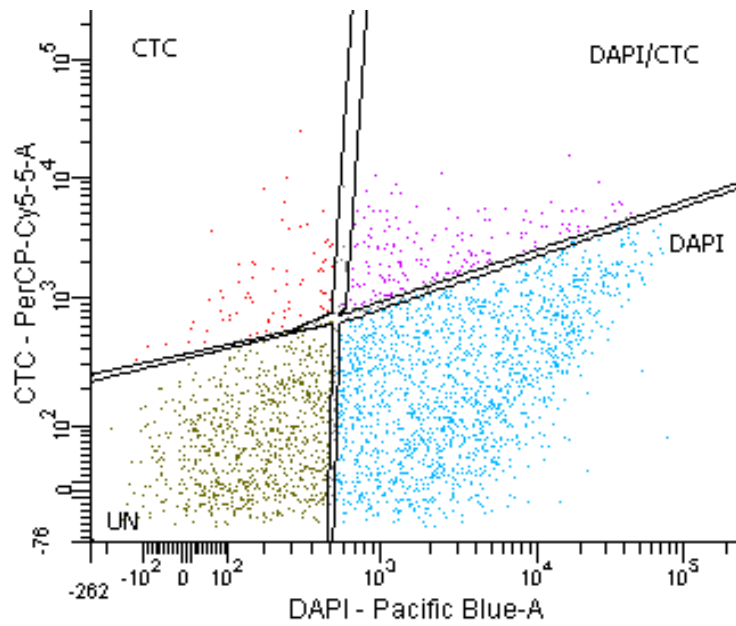


1



2

3 **Figure S1.** Example of flow cytometry output used for estimating the fraction of
4 metabolically active and dormant cells in soil. The purple dots in the upper-right panel are
5 cells that were labeled with both DAPI and CTC and therefore were counted as active cells.
6 The blue dots in the lower-right panel were cells that were labeled with DAPI but not with
7 CTC were therefore counted as dormant cells. Considering that CTC needs to be reduced to
8 the fluorophore CTC-formazan to emit a signal and be detected, and that we only counted
9 cells that had similar light scattering characteristics to the *Escherichia coli* used as positive
10 control, we assumed that the red dots in the upper-left panel were also active cells that may
11 have needed more time to incorporate DAPI.