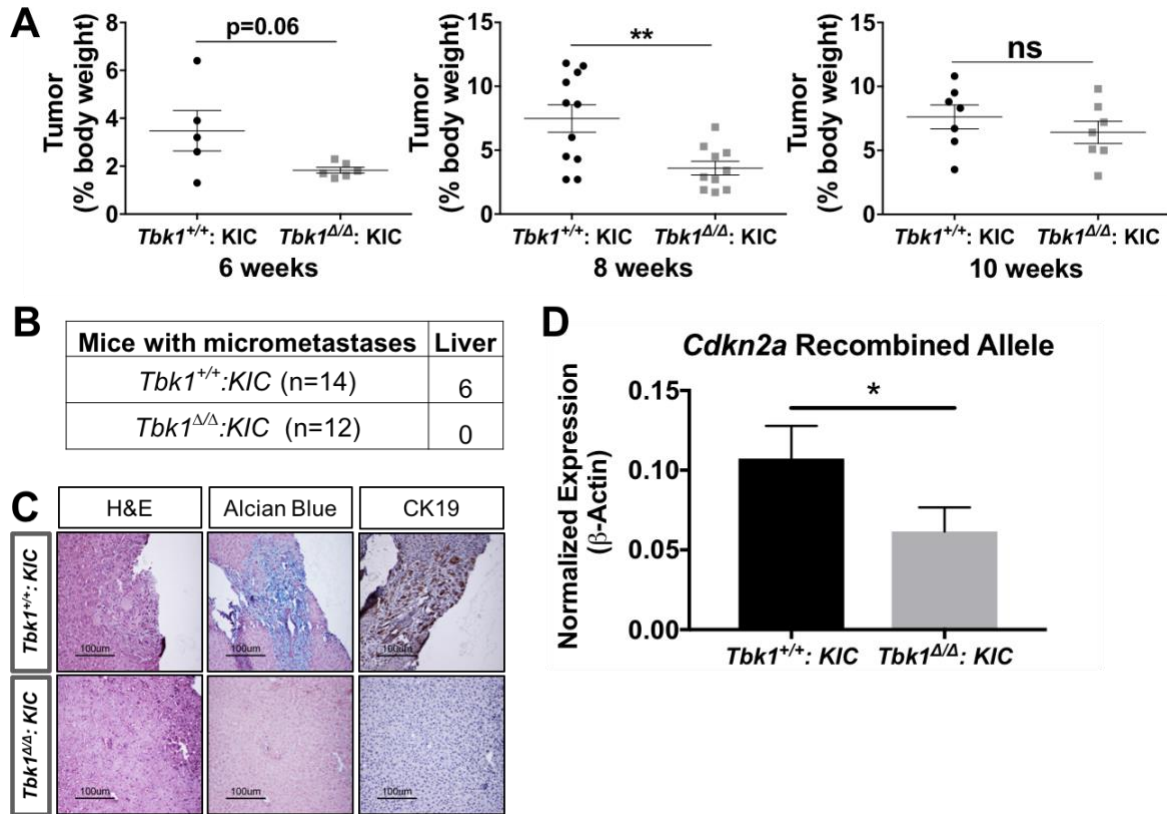


Supplementary Figures

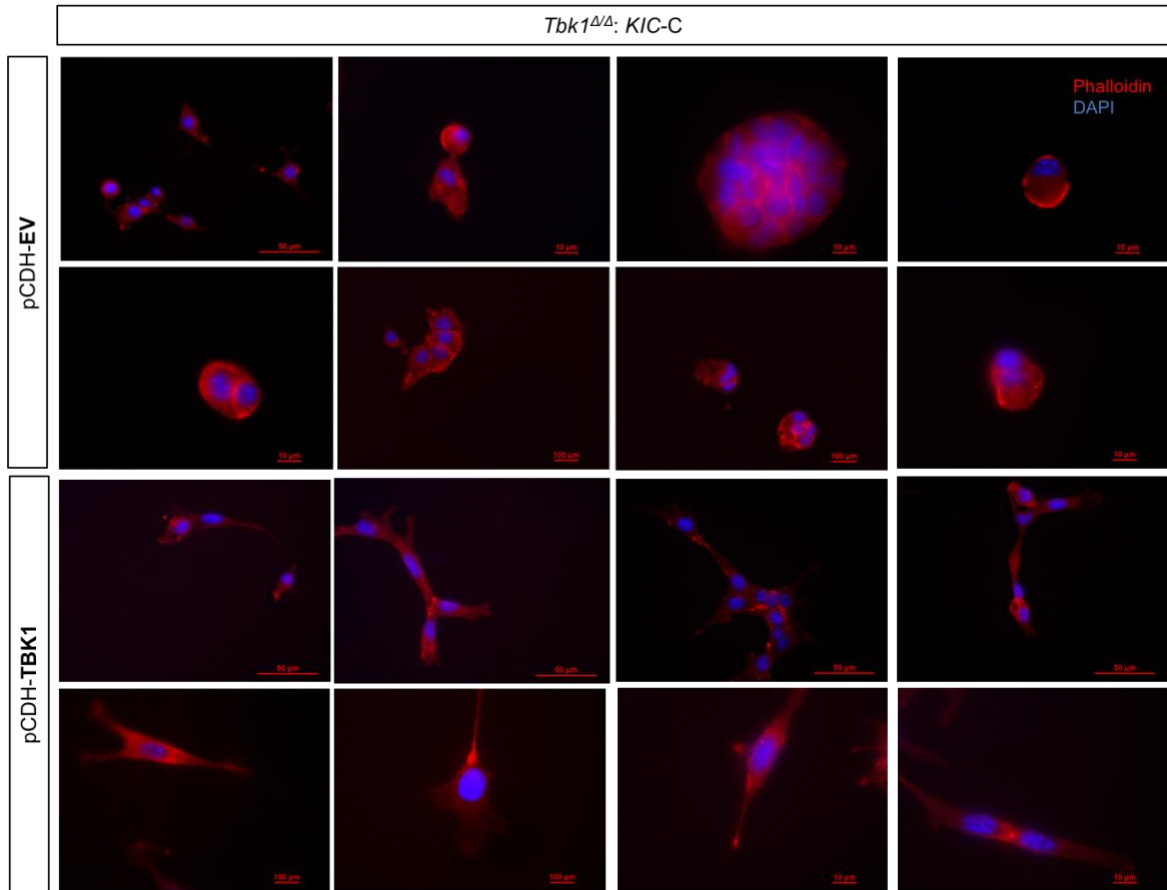
Supplemental Figure 1. *Tbk1 Δ/Δ* : KIC mice have less overall tumor burden than *Tbk1 $^{+/+}$* : KIC mice.



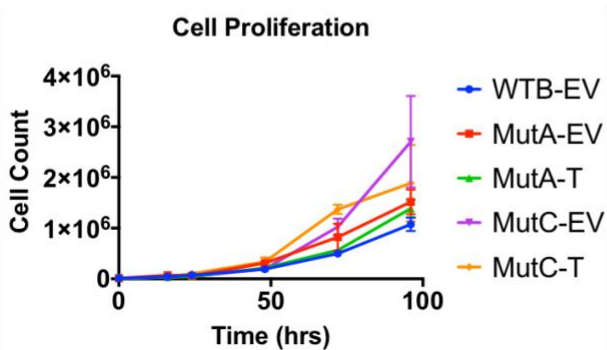
a) Tumor as a percentage of body weight at 6, 8 and 10 weeks in *Tbk1 Δ/Δ* : KIC and *Tbk1 $^{+/+}$* : KIC mice. Results are representative of mean \pm SEM. Unpaired *t* test, $*p < 0.05$; *ns*, not significant. **b)** Number of mice from **(a)** with liver micrometastases. **c)** Representative liver histology in mice from **(a)**, including H&E, alcian blue, and CK19 immunohistochemical staining. Scale bars indicate 100 μ m. **d)** *Cdkn2a* recombinant allele qPCR of *Tbk1 $^{+/+}$* : KIC and *Tbk1 Δ/Δ* : KIC livers. *Cdkn2a* levels were normalized to mouse β -actin. Results are representative of mean \pm SEM. Unpaired *t* test, $*p < 0.05$

Supplemental Figure 2. TBK1 re-expression drives a mesenchymal morphology in *Tbk1*^{Δ/Δ}: KIC cell lines.

A

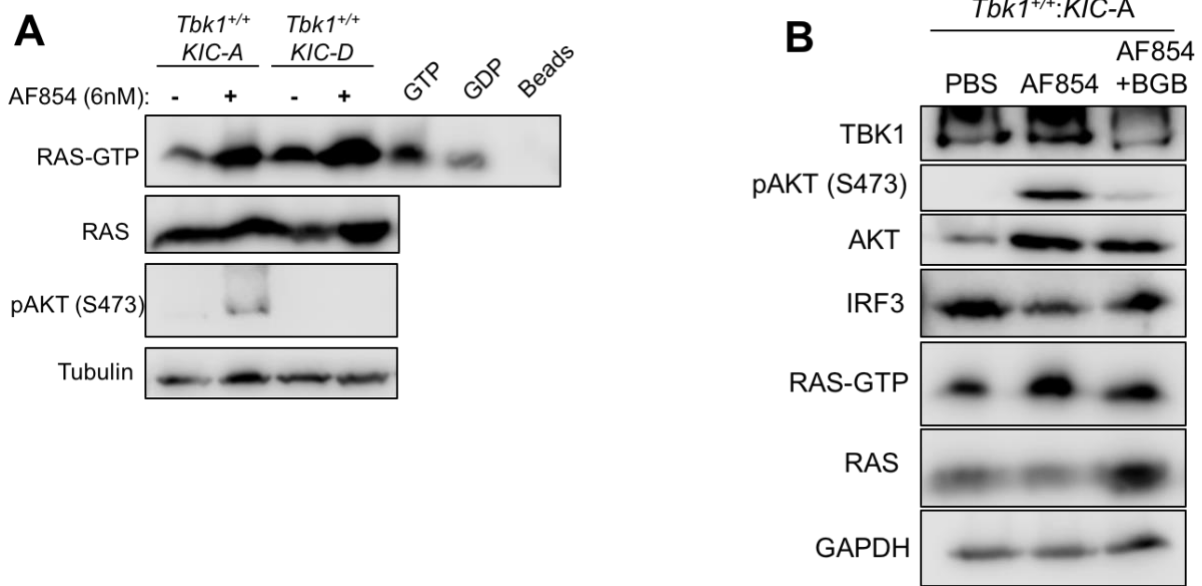


B



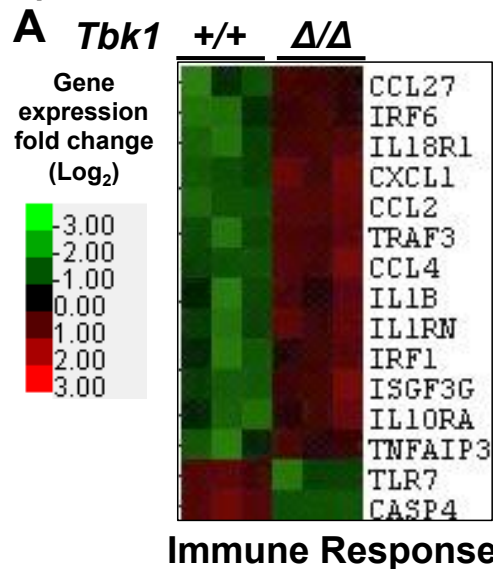
a) Representative images of *Tbk1*^{Δ/Δ}: KIC-C cells infected with lentiviral empty vector (EV) or full-length TBK1 (T) plated on a mixed layer of collagen and Matrigel. Nuclei are labeled with DAPI (blue) and F-actin is labeled with phalloidin (red). **b)** Cell proliferation of *Tbk1*: KIC cell lines infected with EV or T. Cells were counted over 96 hours, n = 3 plates/cell line. Results are representative of mean +/- SEM.

Supplemental Figure 3. AF854 Axl-activating antibody stimulates Ras activity.



a) Protein lysates from *Tbk1*^{+/+}: KIC-A and *Tbk1*^{+/+}: KIC-D cells treated with PBS or AF854 (6 nM) for 30 min were assayed for active Ras and immunoblotted for indicated proteins and quantified. GTP and GDP protein loading were used as positive and negative controls, respectively. **b)** Protein lysates isolated from *Tbk1*^{+/+}: KIC-A cells treated with either PBS, AF854 (6 nM), or AF854 (6 nM) + BGB324 (BGB, 2 nM) for 30 min were assayed for active Ras and immunoblotted for indicated proteins and quantified. Tubulin and GAPDH were used as loading controls.

Supplemental Figure 4. *Tbk1*^{Δ/Δ}: *KIC* tumors contain higher pro-inflammatory gene expression than *Tbk1*^{+/+}: *KIC* tumors.



a) Heatmap representing gene expression fold change (log₂) of inflammatory genes from *Tbk1*^{Δ/Δ}: *KIC* and *Tbk1*^{+/+}: *KIC* tumors. Color key indicates gene expression fold change; n = 3 tumors/genotype, p < 0.05 for all genes between *Tbk1*^{Δ/Δ}: *KIC* and *Tbk1*^{+/+}: *KIC* tumors.