

Lineage: Visualizing Multivariate Clinical Data in Genealogy Graphs

Supplementary Material

Carolina Nobre

cnobre@sci.utah.edu

University of Utah

Nils Gehlenborg

nils@hms.harvard.edu

Harvard Medical School

Hilary Coon

hilary.coon@utah.edu

University of Utah

Alexander Lex

alex@sci.utah.edu

University of Utah

Scalability Demonstrations

Here we compare Lineage to Progeny, the tool currently used by our collaborators. Progeny is a commercial genealogy drawing tool that closely follows the standard for visualizing genealogies. For details, visit <http://www.progenygenetics.com/>. Figures S1 and S2 show the same dataset visualized with Progeny (Figure S1) and Lineage (Figure S2). Progeny shows three attributes, while Lineage shows 15.

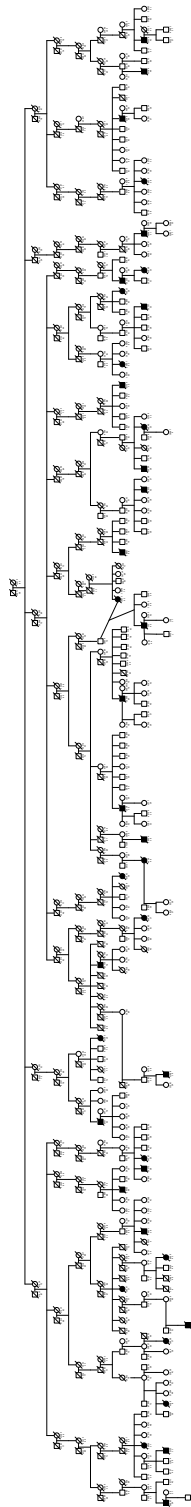


Figure S1: Screenshot of Progeny, the tool previously used by our collaborators. This figure shows a family with 404 members and three attributes.

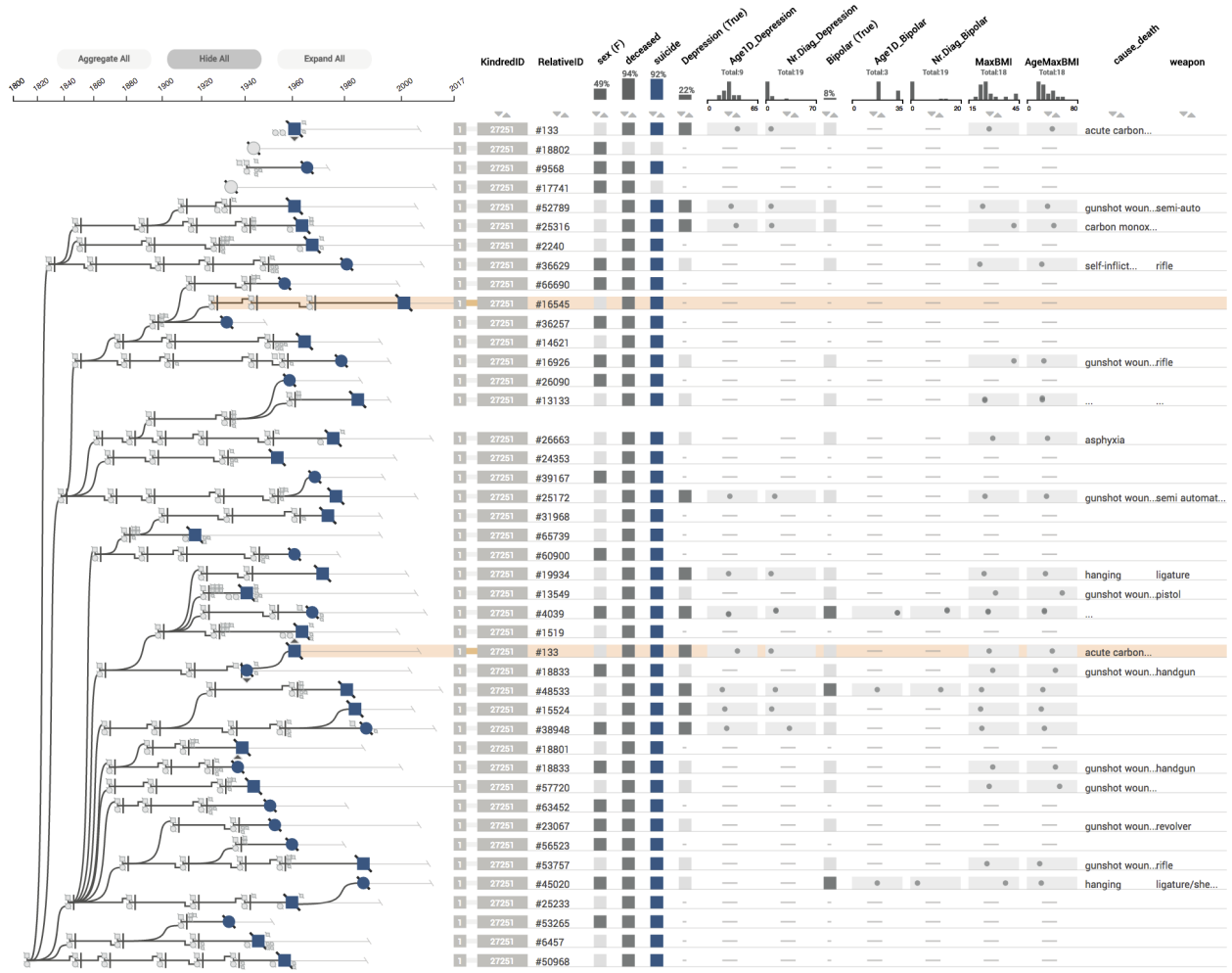


Figure S2: The same family as shown in S1 in Lineage. The 404 family members conveniently fit on a single screen on a 2560x1600 pixel display while 15 different attributes are shown in the table.