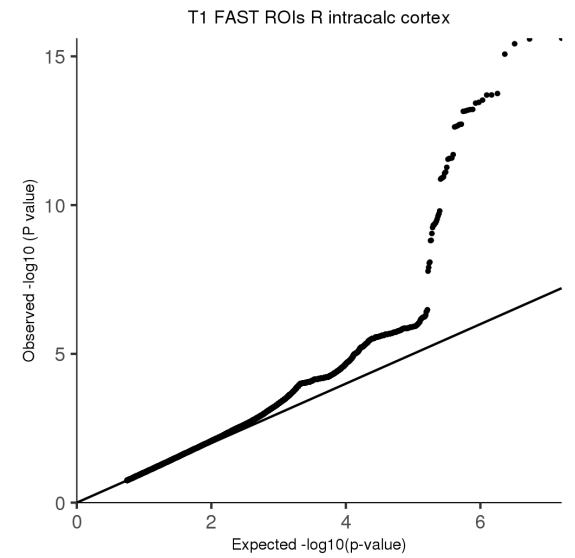
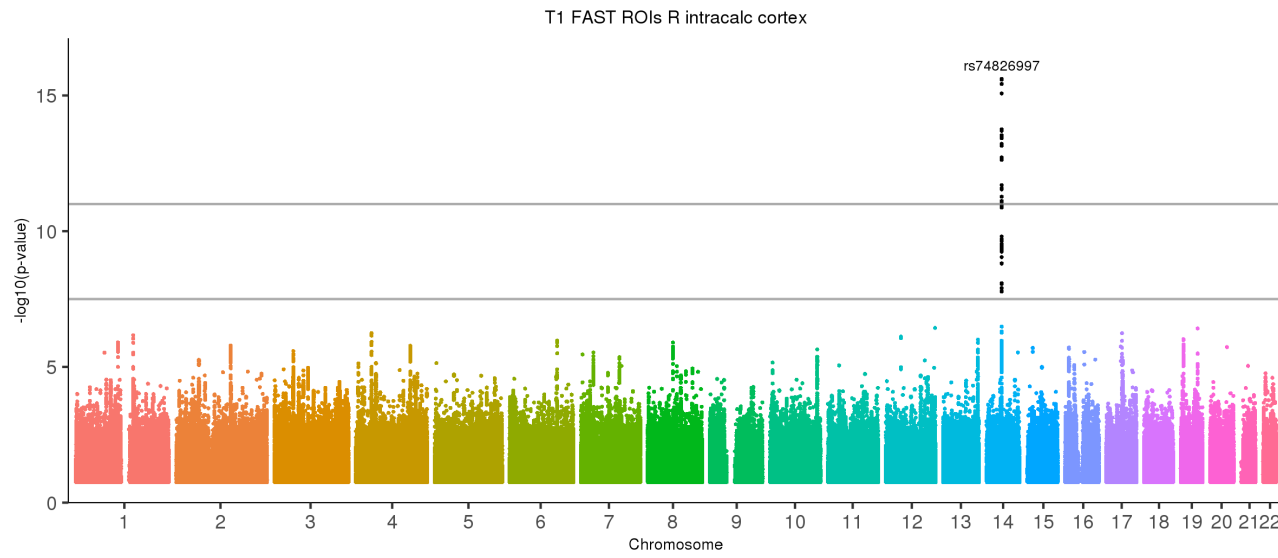


IDP GWAS Manhattan Plots

List of Figures

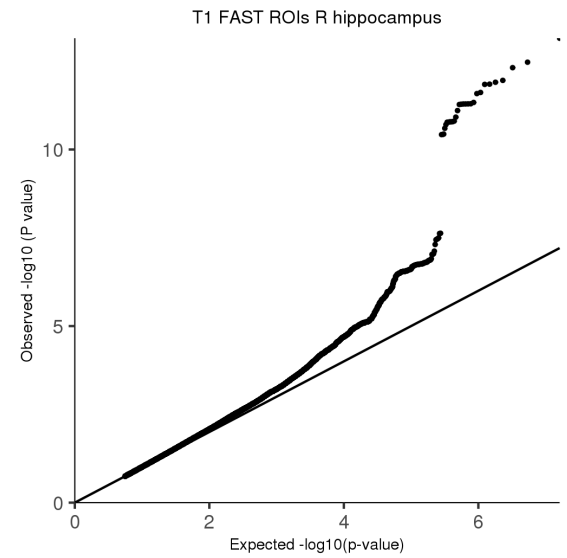
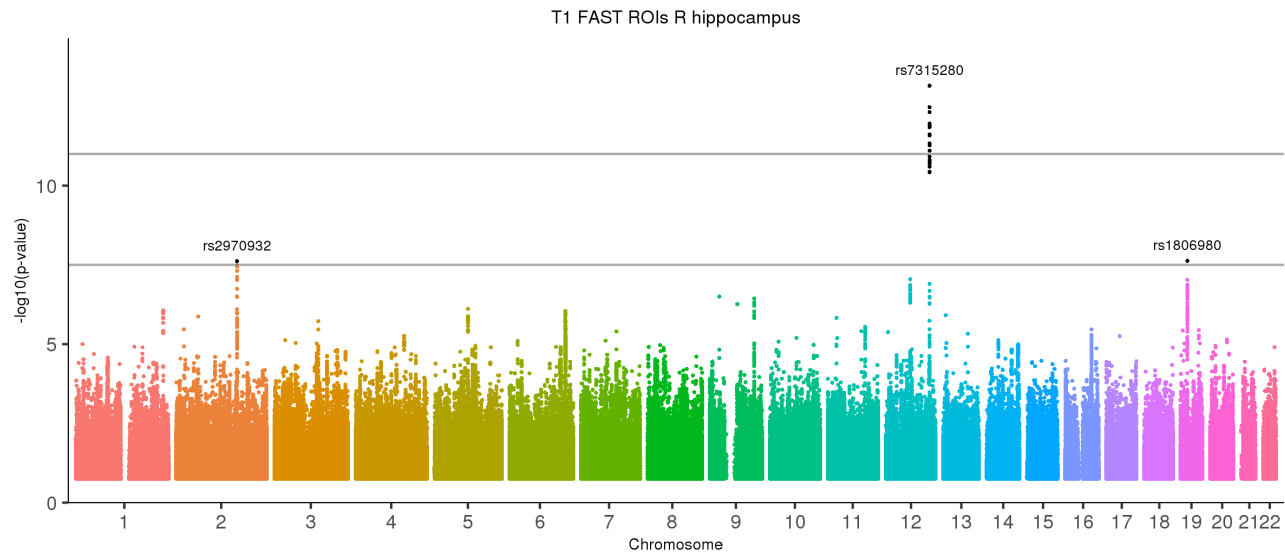
1	T1 FAST ROIs R intracalc cortex	1
2	T1 FAST ROIs R hippocampus	2
3	T1 FAST ROIs R ventral striatum	3
4	T1 FAST ROIs L cerebellum crus I	4
5	T1 FAST ROIs V cerebellum VIIIa	5
6	T1 FAST ROIs L cerebellum IX	6
7	T2 FLAIR BIANCA WMH volume	7
8	dMRI TBSS MO Pontine crossing tract	8
9	dMRI TBSS ICVF Genu of corpus callosum	9
10	dMRI TBSS ICVF Splenium of corpus callosum	10
11	dMRI TBSS ICVF Superior cerebellar peduncle L	11
12	dMRI TBSS OD Genu of corpus callosum	12
13	dMRI ProbtrackX ICVF ilf r	13
14	dMRI ProbtrackX ISOVF unc r	14
15	NETMAT amplitudes (25) 05	15
16	NETMAT amplitudes (25) 12	16
17	NETMAT amplitudes (25) 13	17
18	T1 FIRST left plus right pallidum volume	18
19	SWI T2star left plus right caudate	19
20	SWI T2star left plus right putamen	20
21	SWI T2star left plus right pallidum	21
22	FreeSurfer volume Left-Cerebellum-White-Matter	22
23	FreeSurfer volume 4th-Ventricle	23
24	FreeSurfer volume Right-Putamen	24
25	FreeSurfer volume MaskVol	25
26	FreeSurfer a2009s rh S central area	26
27	NETMAT edge ICA 2	27
28	NETMAT edge ICA 3	28
29	NETMAT edge ICA 4	29

Figure 1: T1 FAST ROIs R intracalc cortex



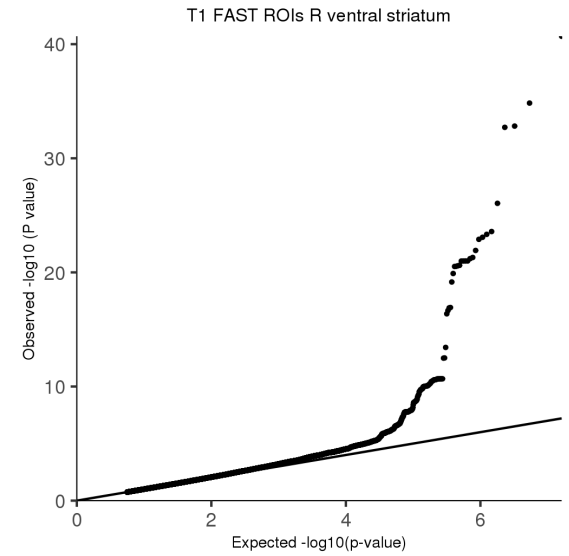
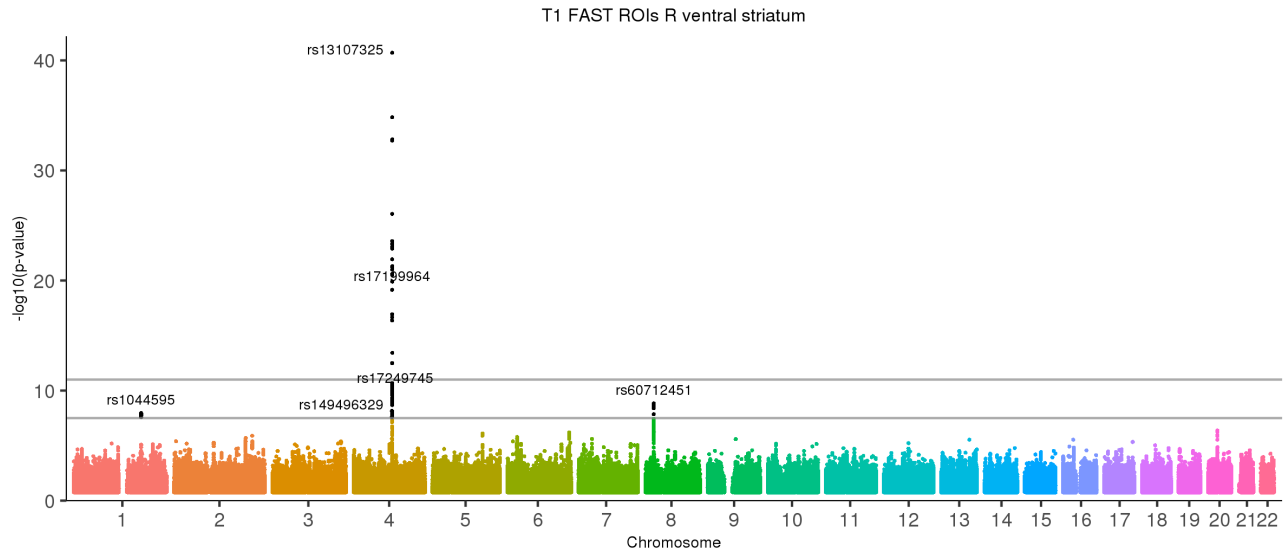
[back to list of plots](#)

Figure 2: T1 FAST ROIs R hippocampus



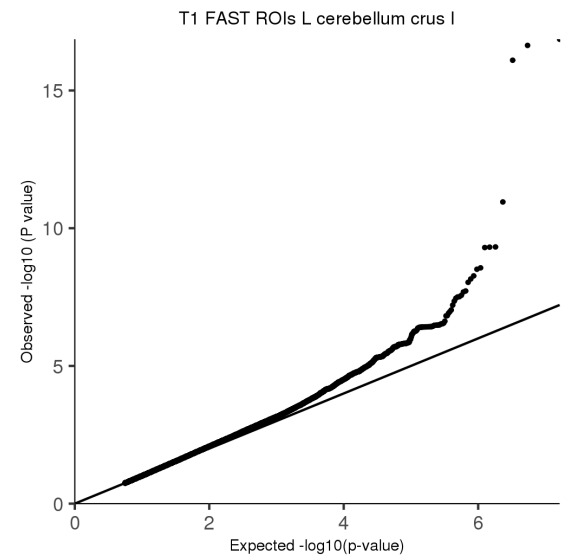
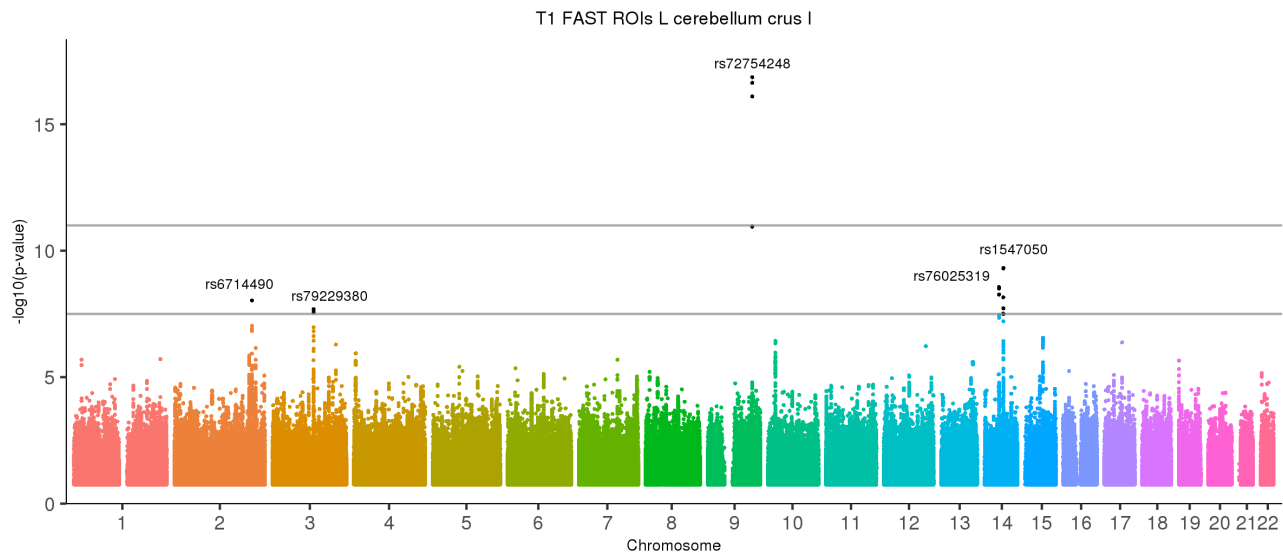
[back to list of plots](#)

Figure 3: T1 FAST ROIs R ventral striatum



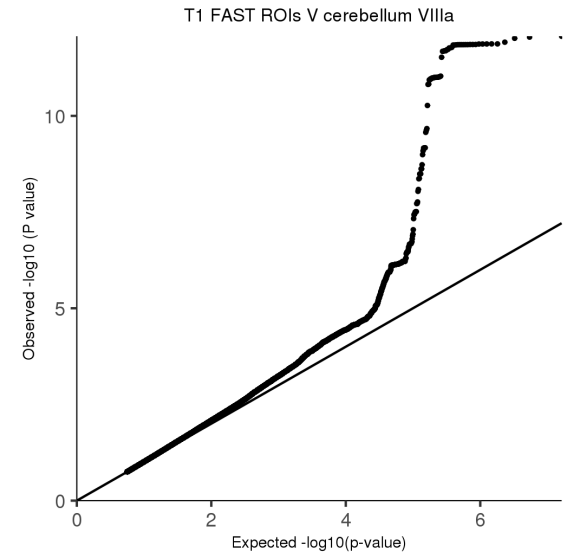
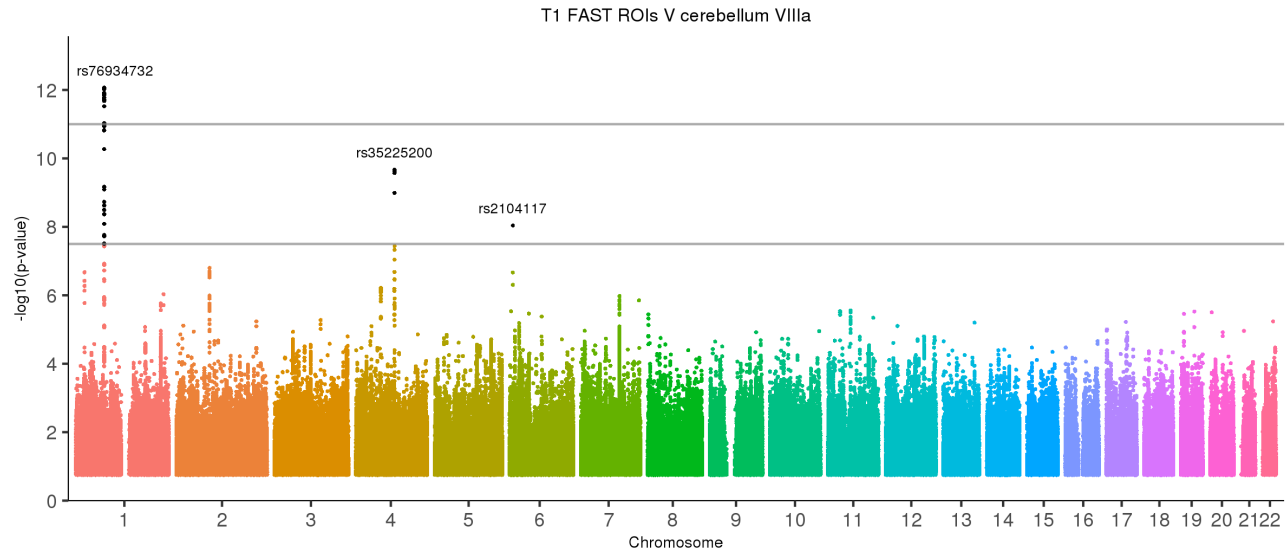
[back to list of plots](#)

Figure 4: T1 FAST ROIs L cerebellum crus I



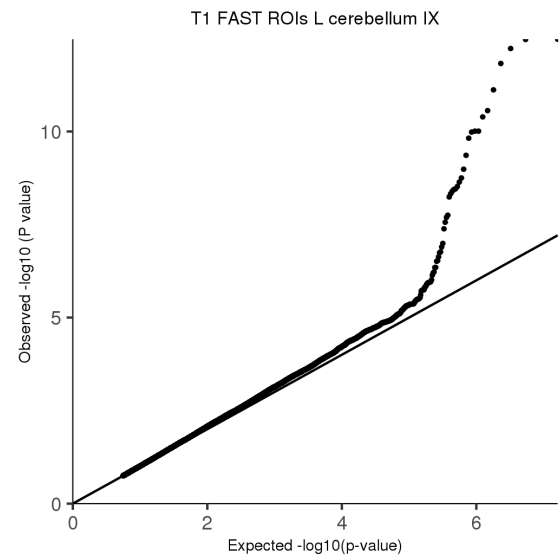
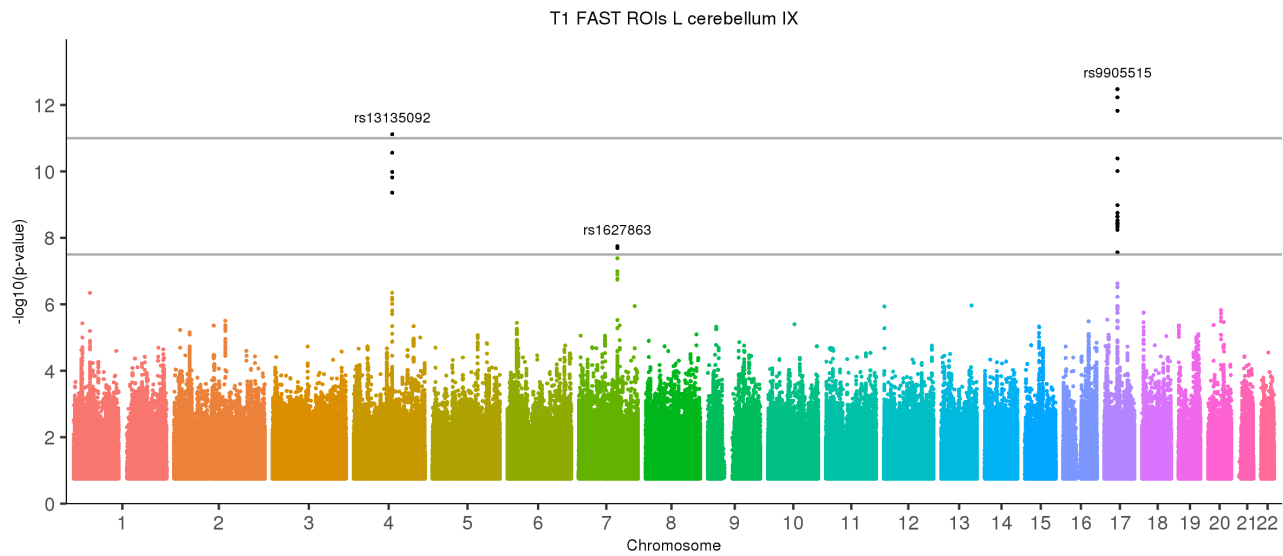
[back to list of plots](#)

Figure 5: T1 FAST ROIs V cerebellum VIIIa



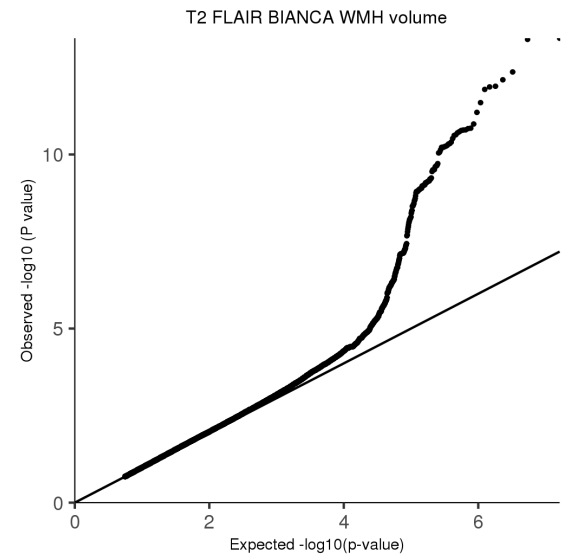
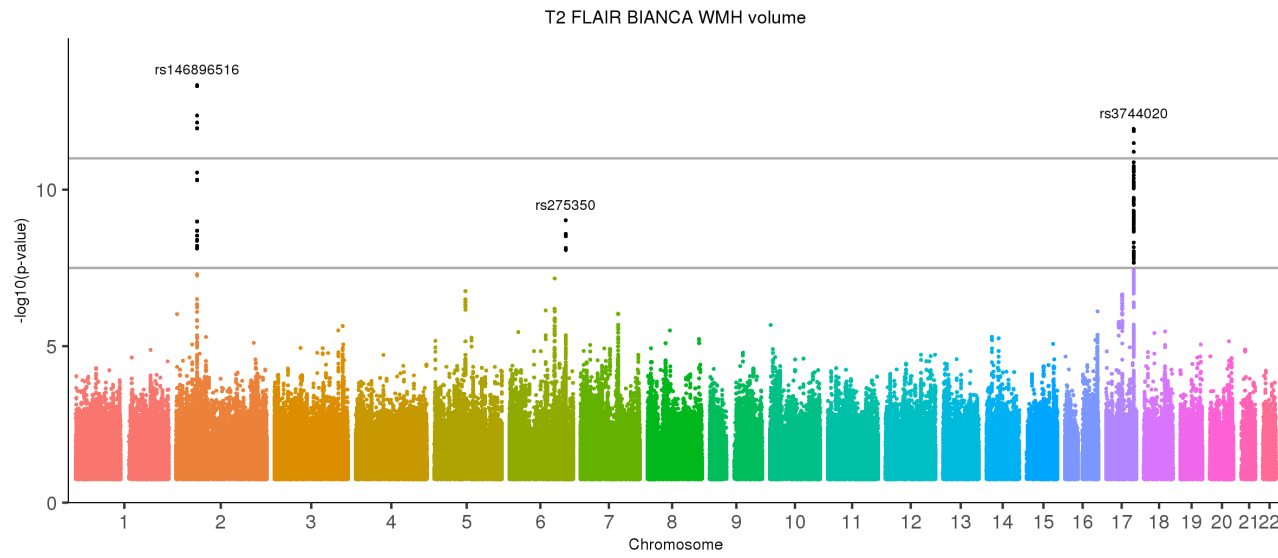
[back to list of plots](#)

Figure 6: T1 FAST ROIs L cerebellum IX



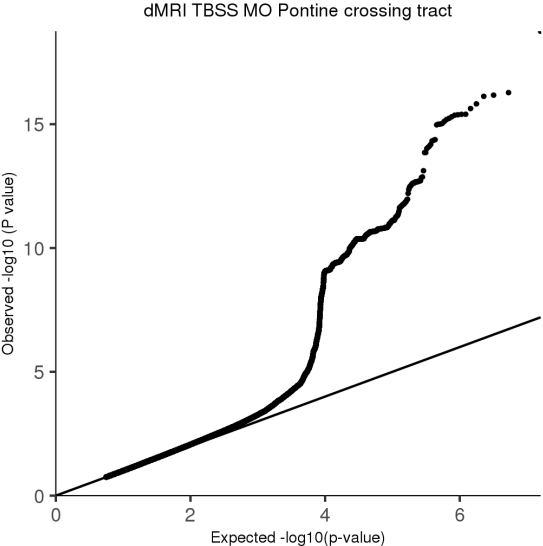
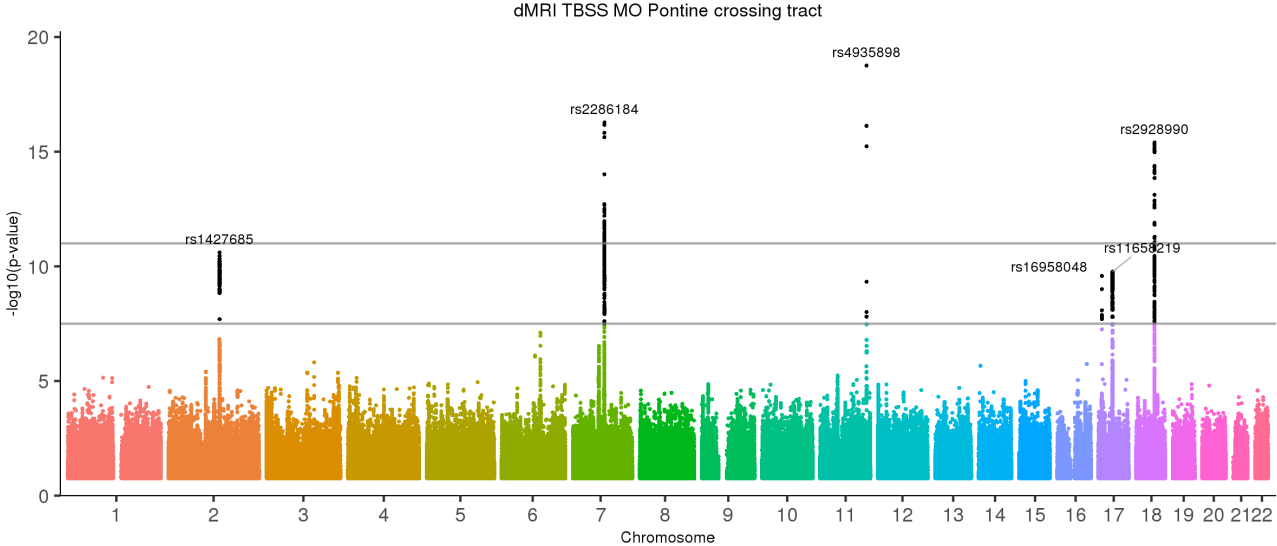
[back to list of plots](#)

Figure 7: T2 FLAIR BIANCA WMH volume



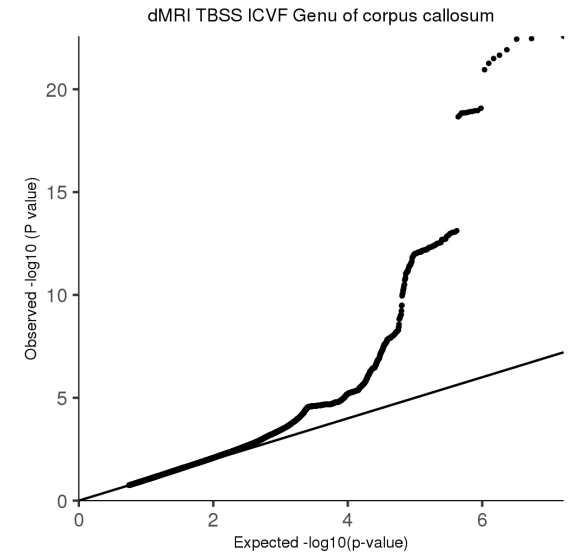
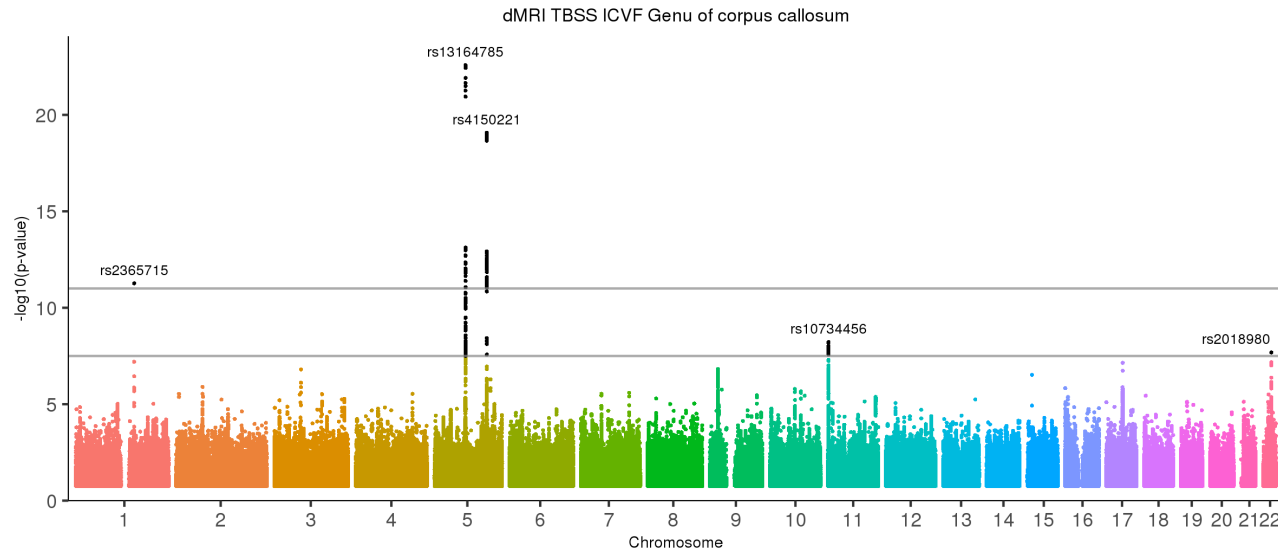
[back to list of plots](#)

Figure 8: dMRI TBSS MO Pontine crossing tract



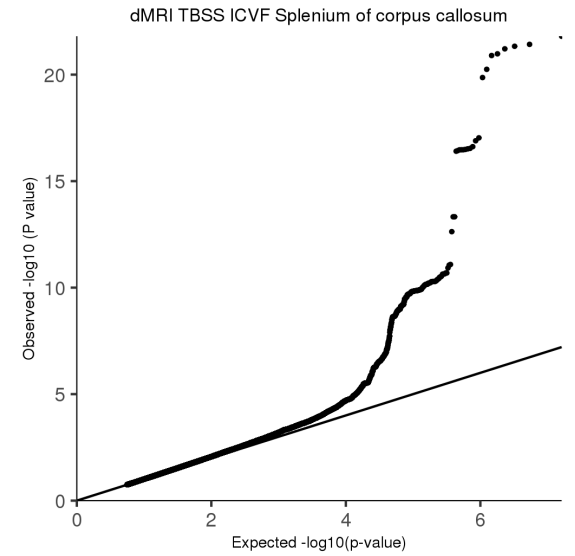
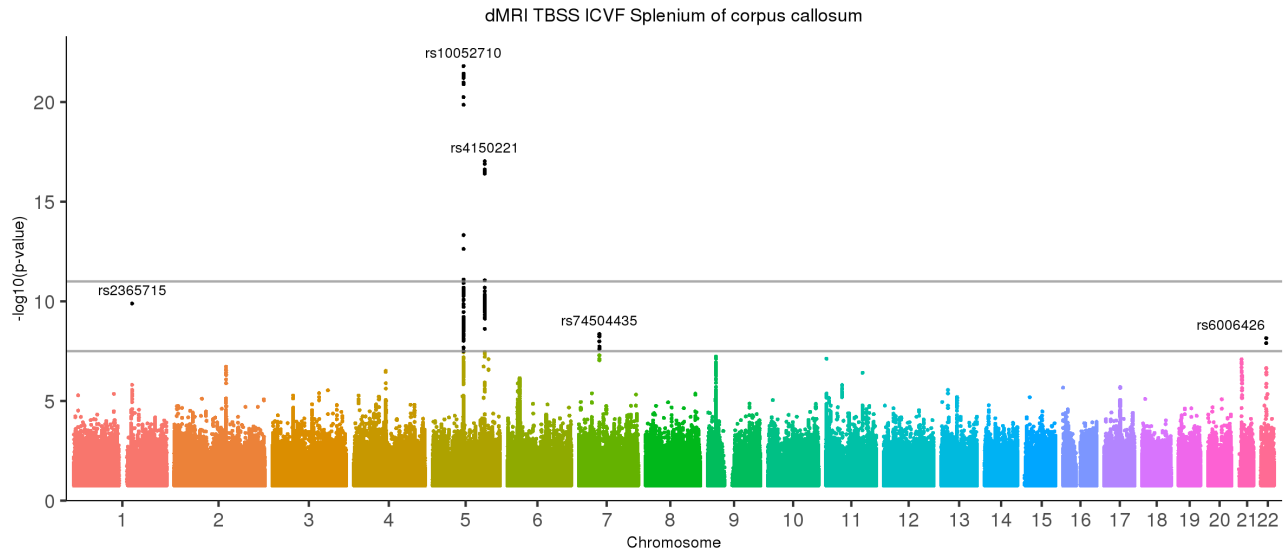
[back to list of plots](#)

Figure 9: dMRI TBSS ICVF Genu of corpus callosum



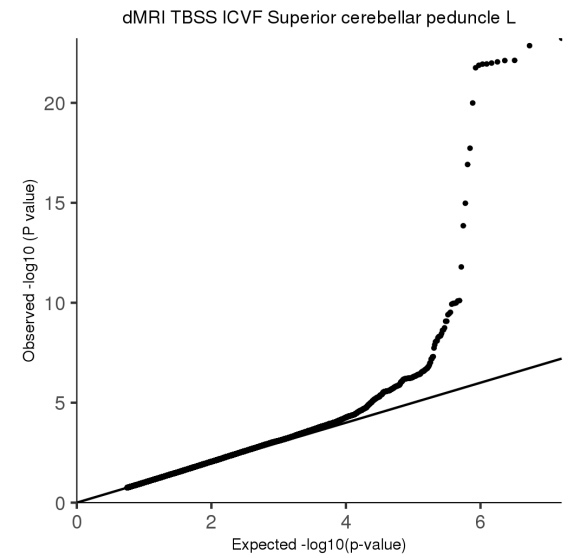
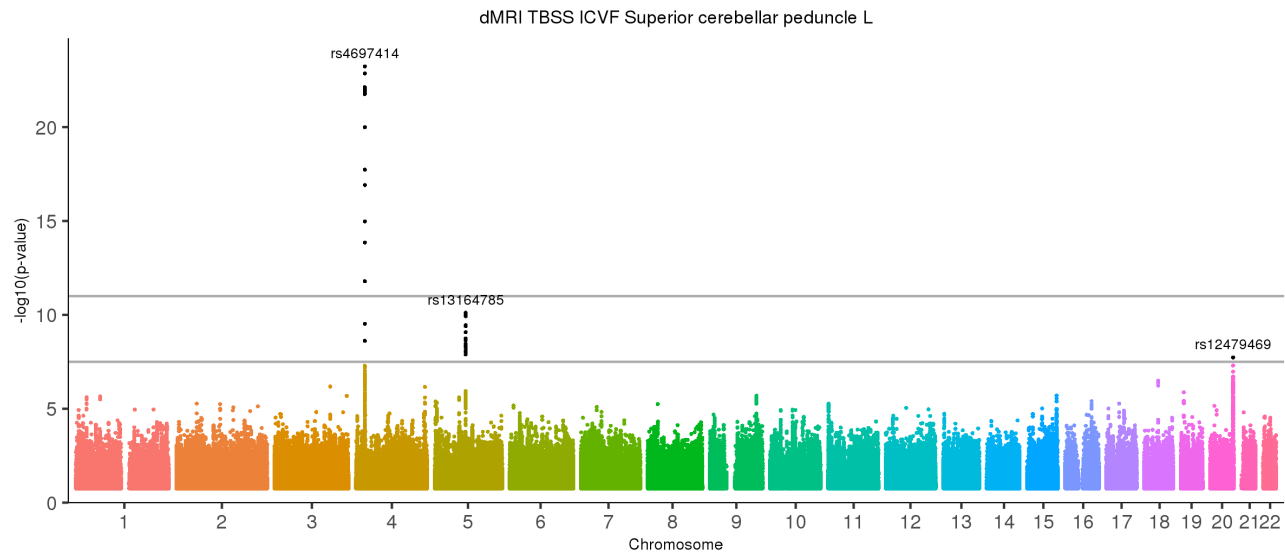
[back to list of plots](#)

Figure 10: dMRI TBSS ICVF Splenium of corpus callosum



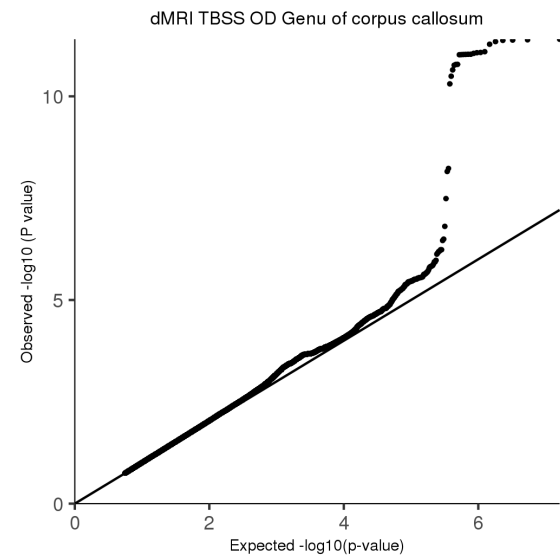
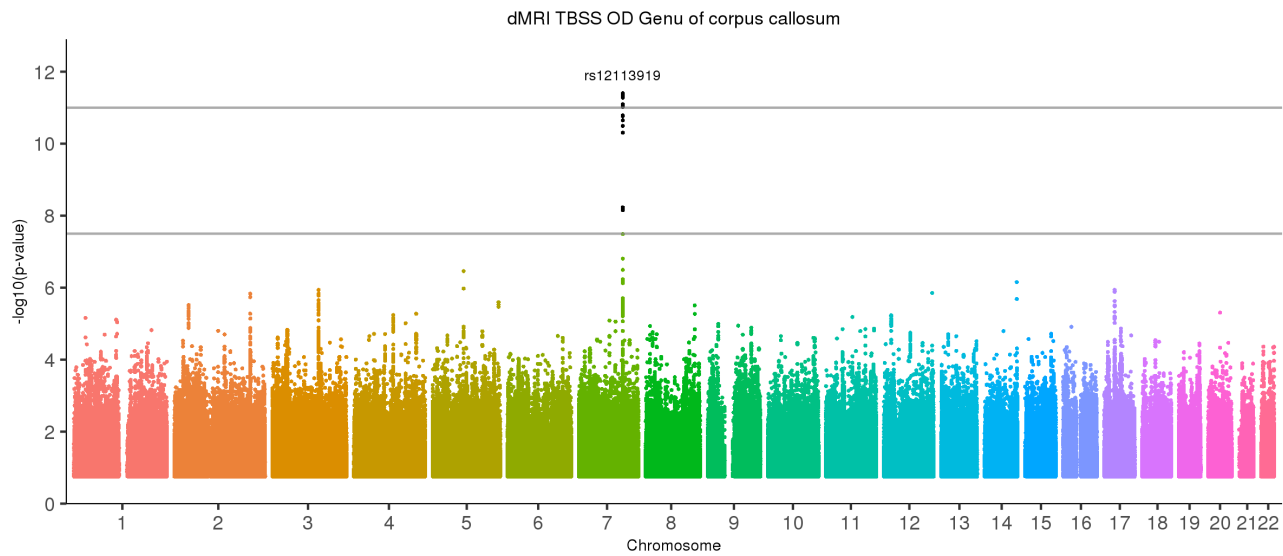
[back to list of plots](#)

Figure 11: dMRI TBSS ICVF Superior cerebellar peduncle L



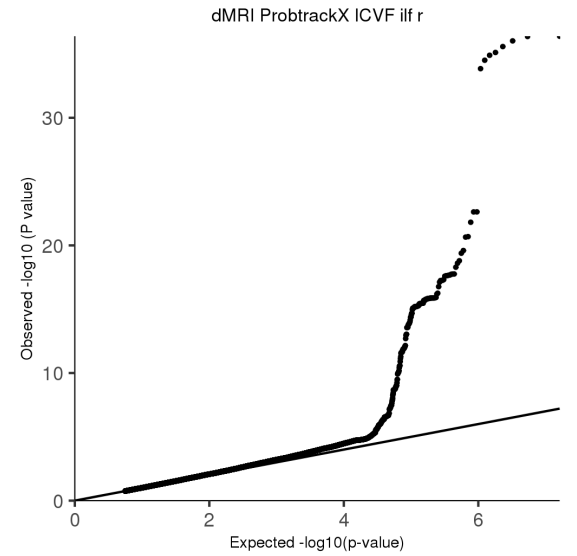
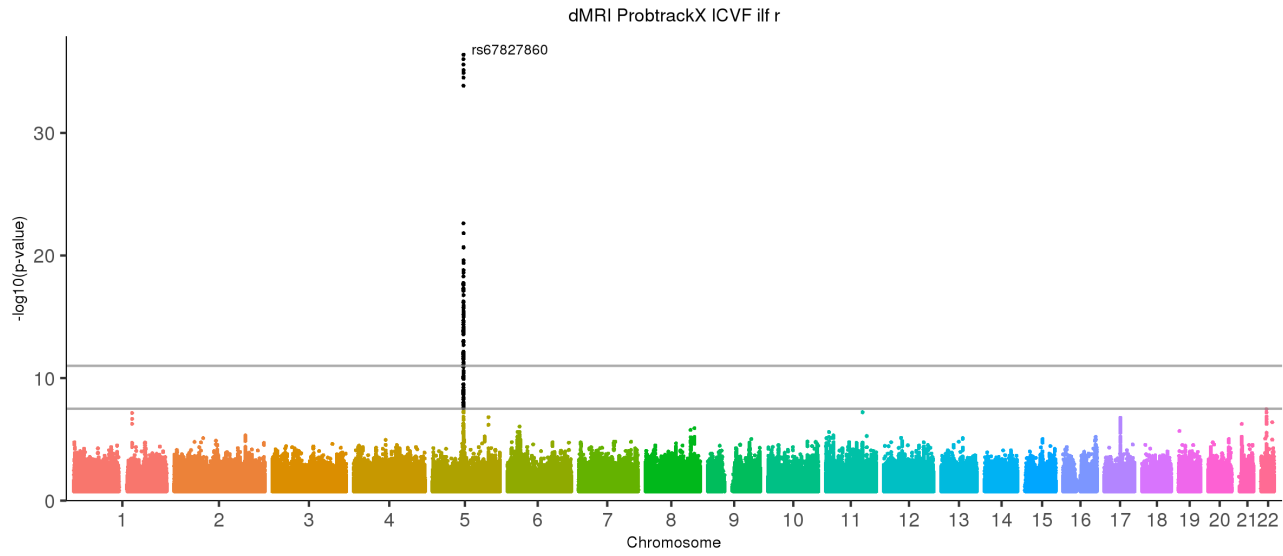
[back to list of plots](#)

Figure 12: dMRI TBSS OD Genu of corpus callosum



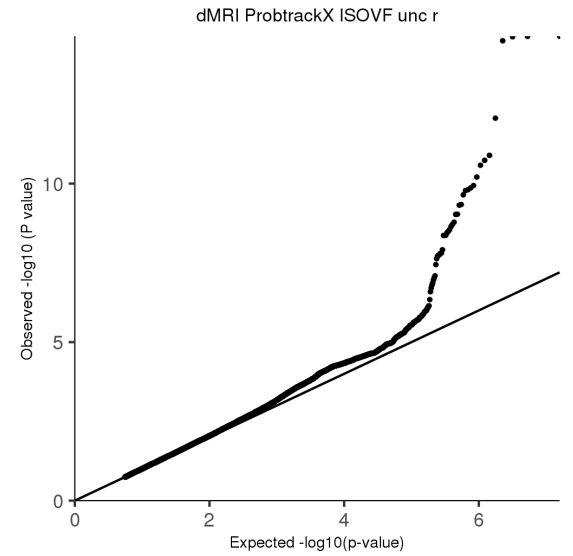
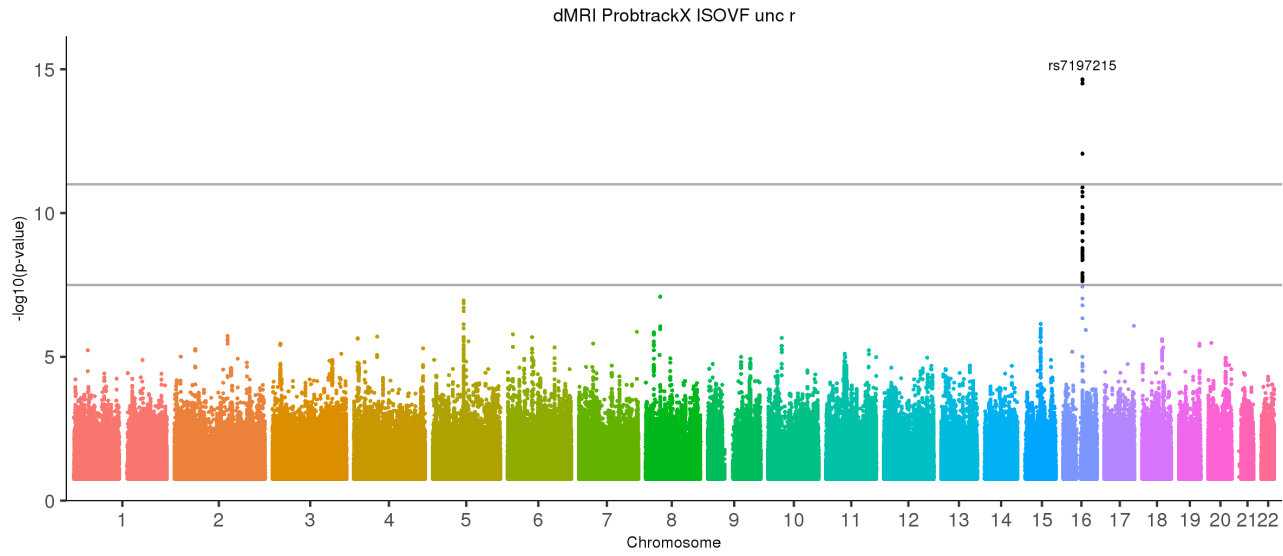
[back to list of plots](#)

Figure 13: dMRI ProbtrackX ICVF ilf r



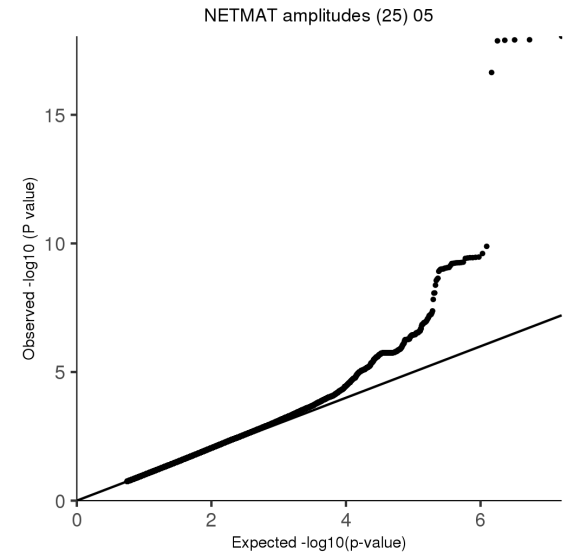
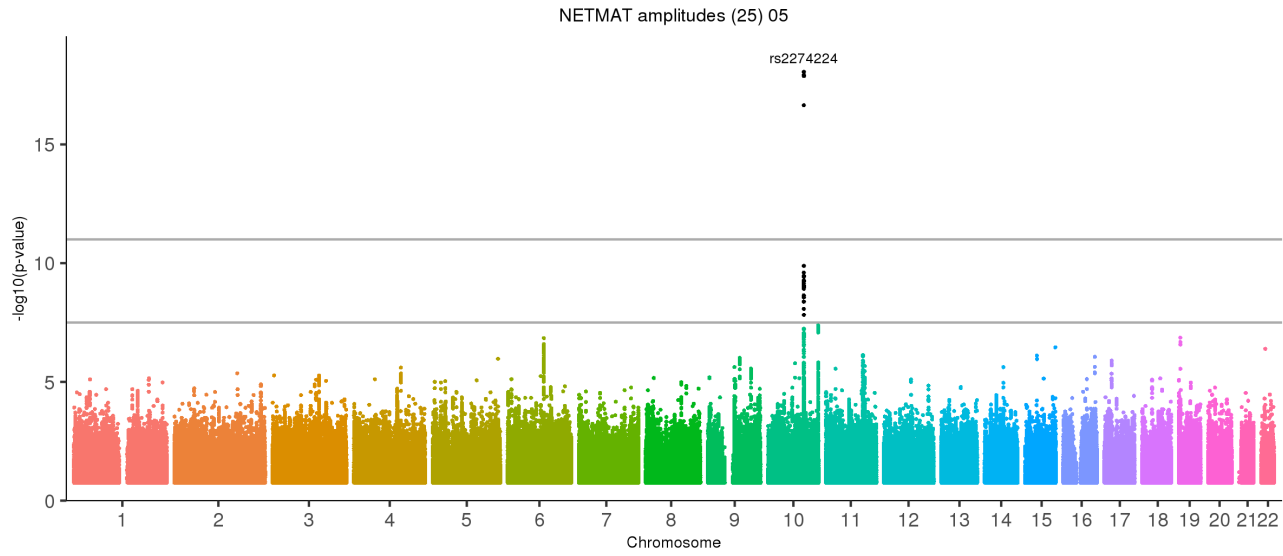
[back to list of plots](#)

Figure 14: dMRI ProbtrackX ISOVF unc r



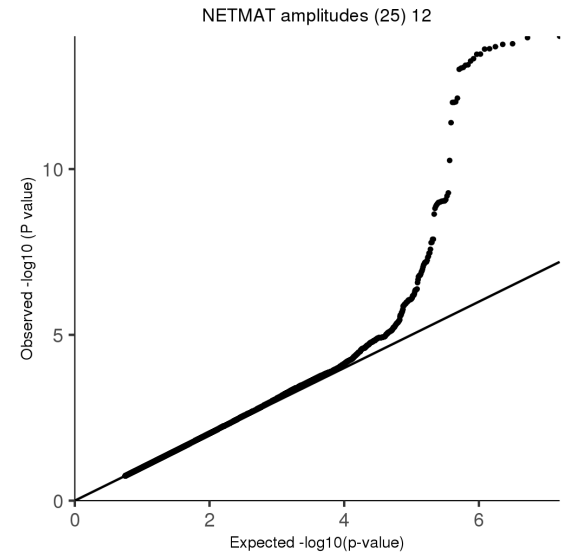
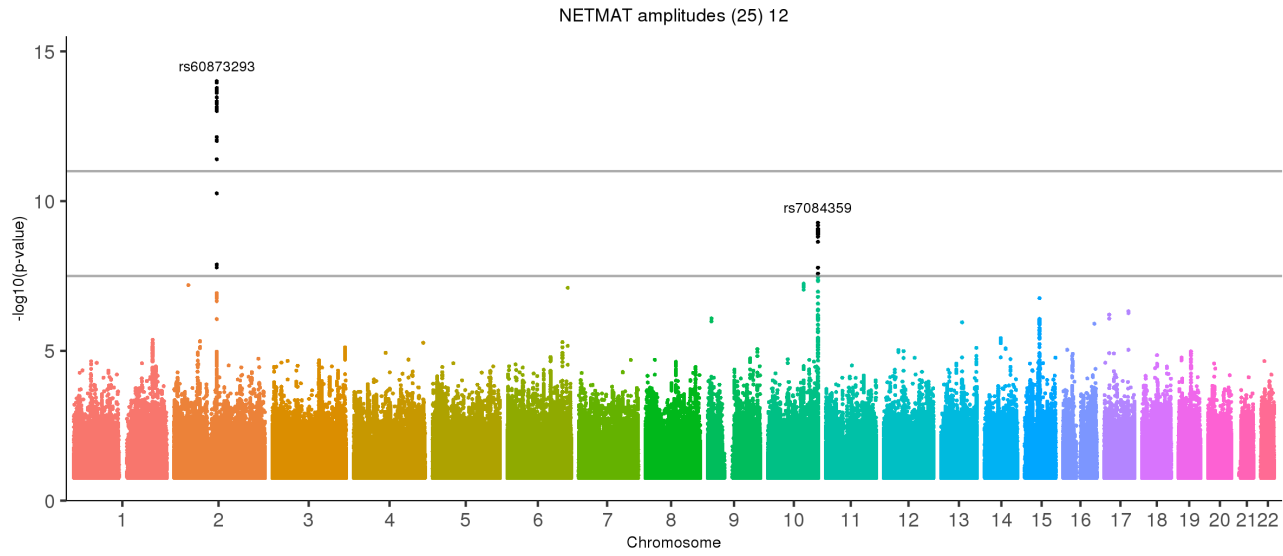
[back to list of plots](#)

Figure 15: NETMAT amplitudes (25) 05



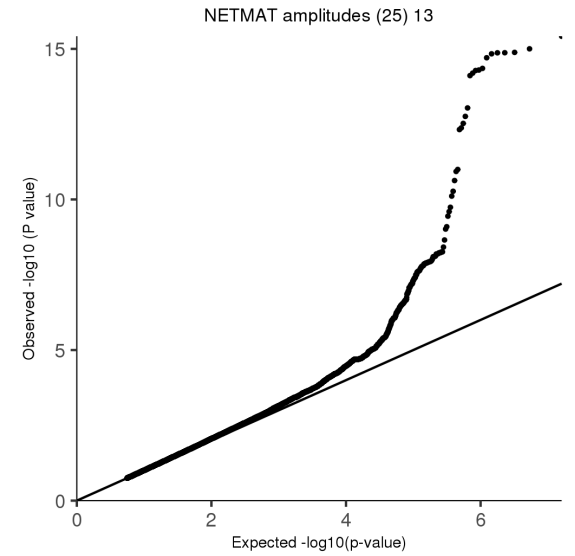
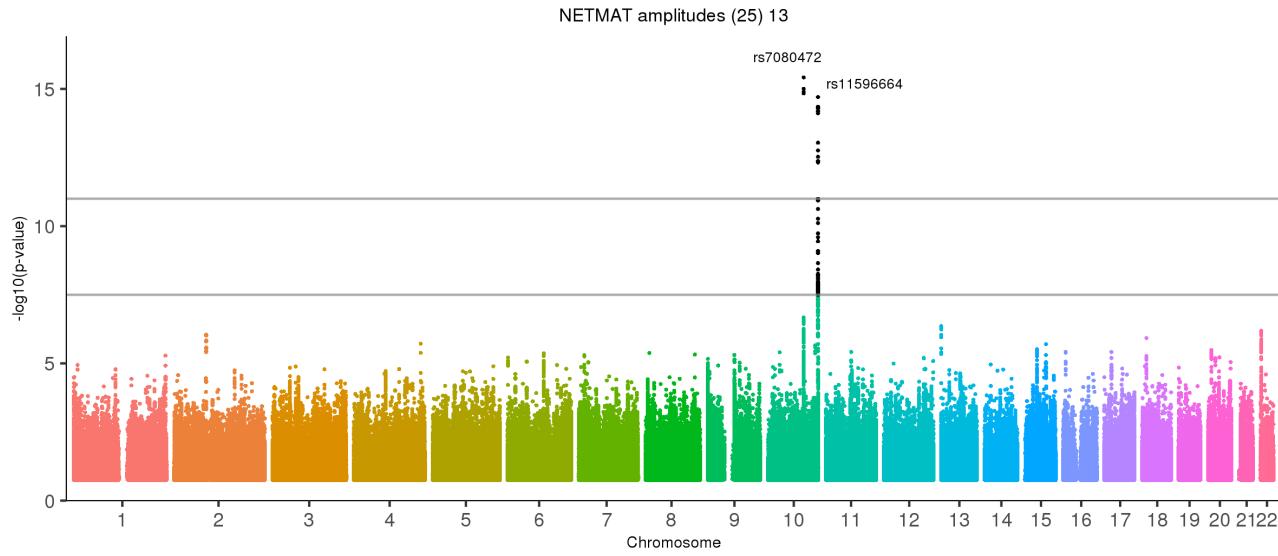
[back to list of plots](#)

Figure 16: NETMAT amplitudes (25) 12



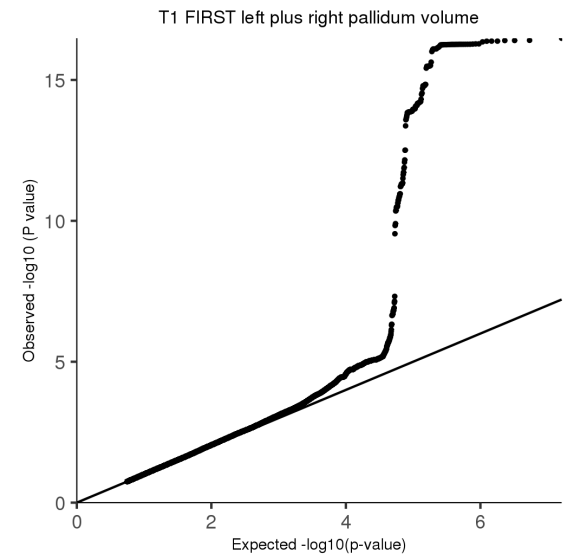
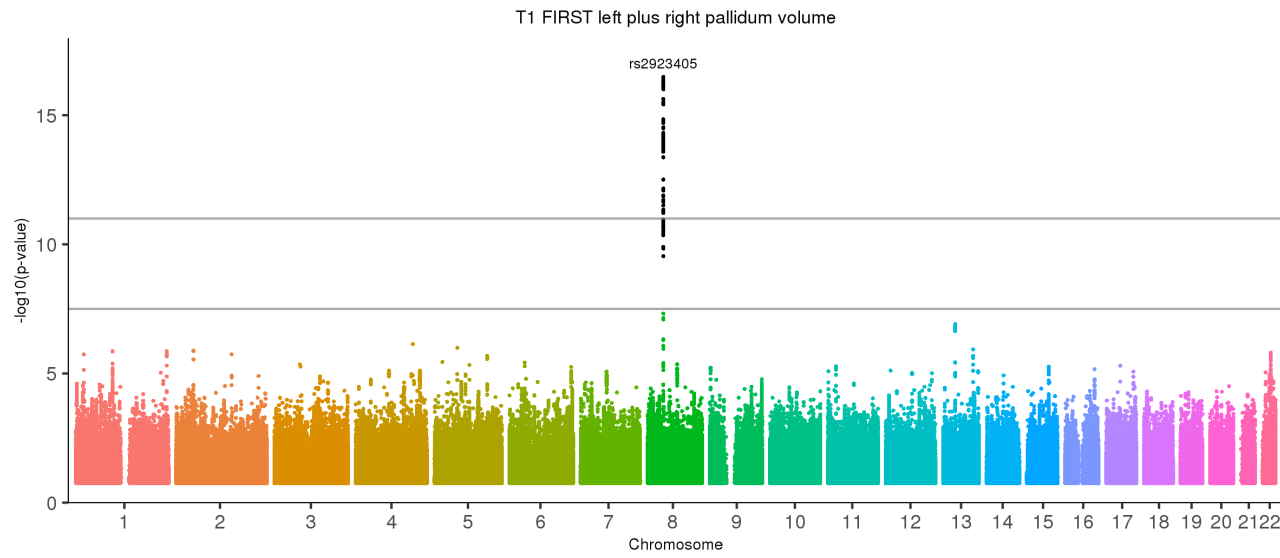
[back to list of plots](#)

Figure 17: NETMAT amplitudes (25) 13



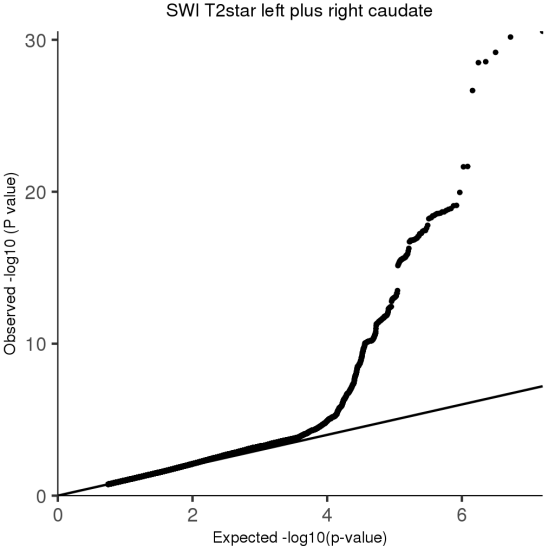
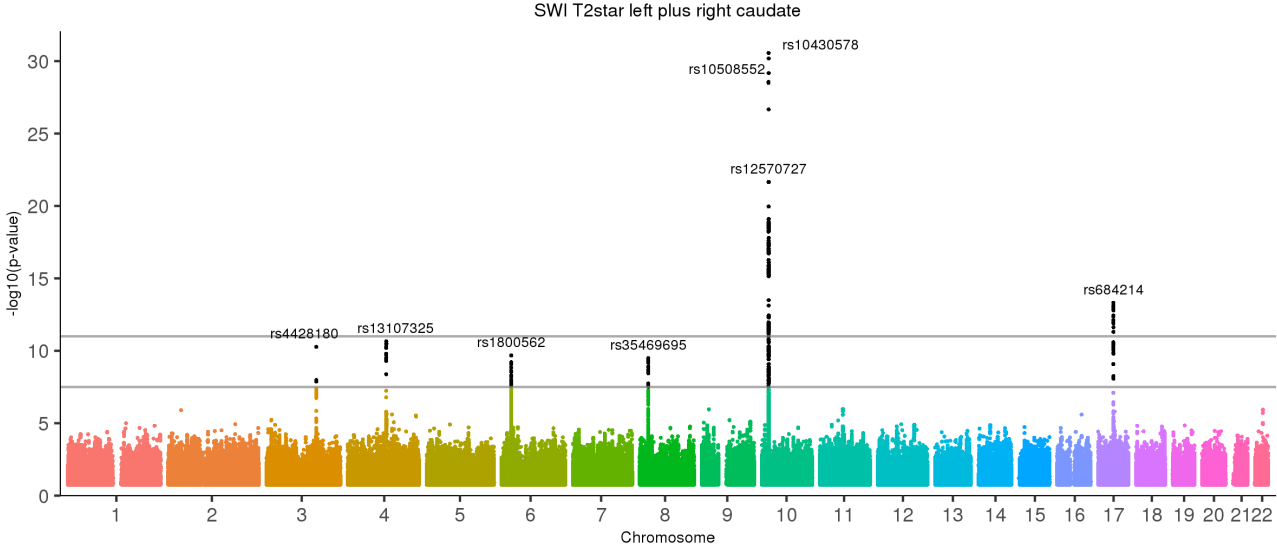
[back to list of plots](#)

Figure 18: T1 FIRST left plus right pallidum volume



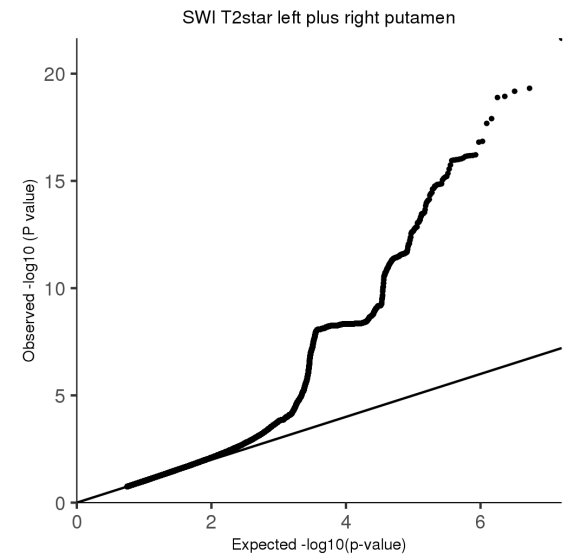
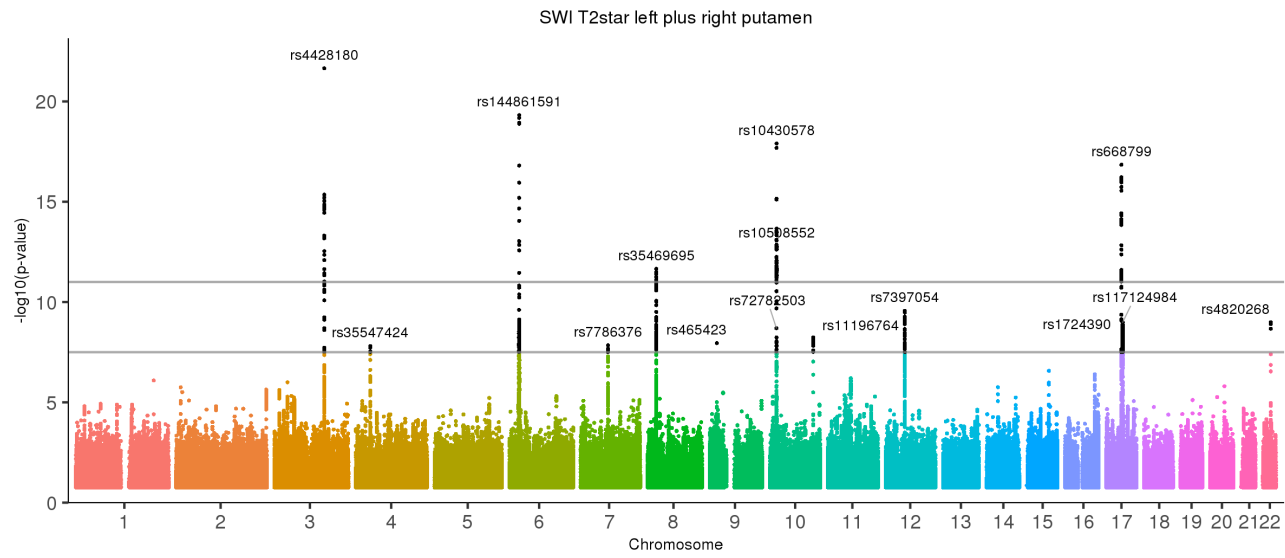
[back to list of plots](#)

Figure 19: SWI T2star left plus right caudate



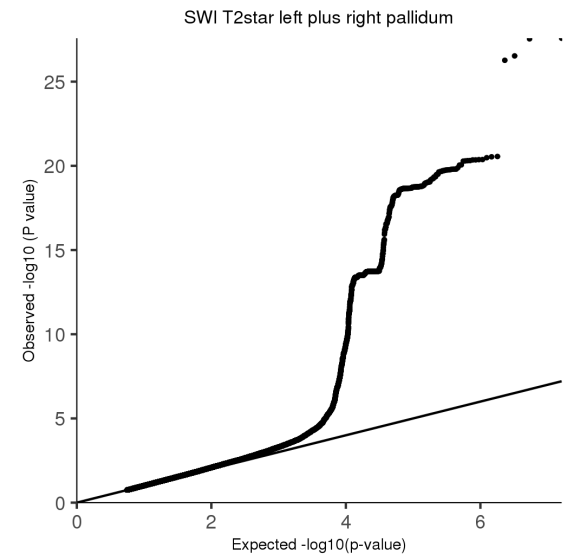
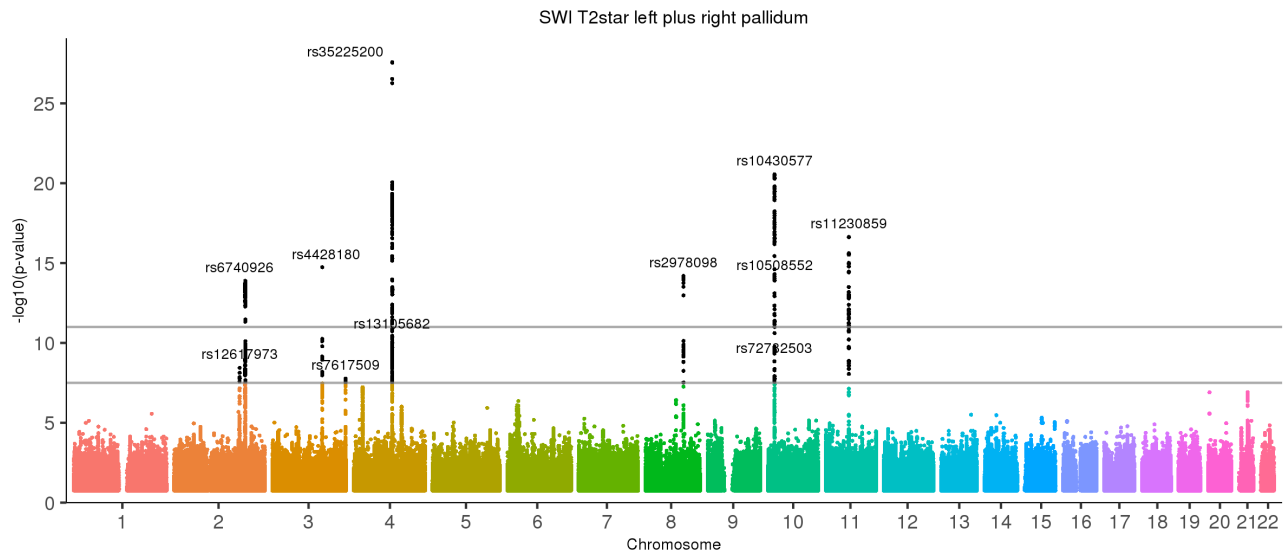
[back to list of plots](#)

Figure 20: SWI T2star left plus right putamen



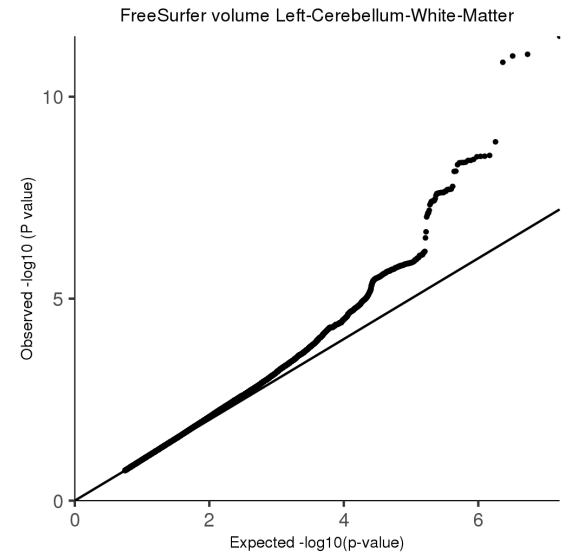
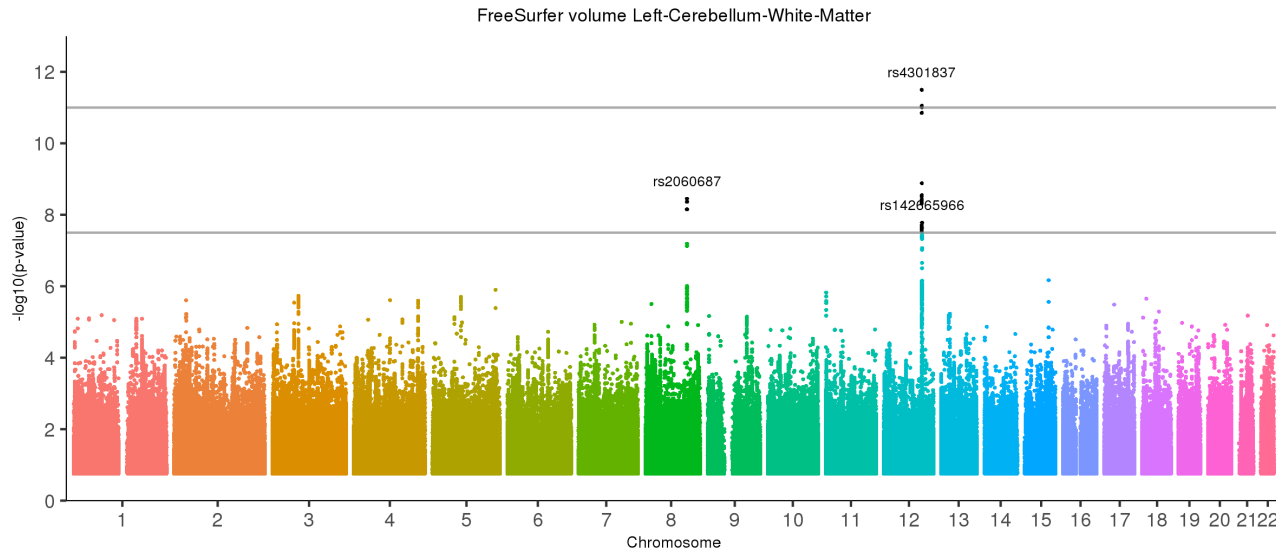
[back to list of plots](#)

Figure 21: SWI T2star left plus right pallidum



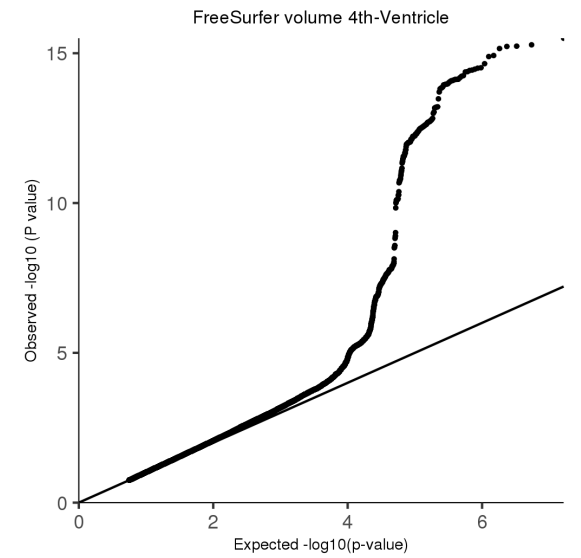
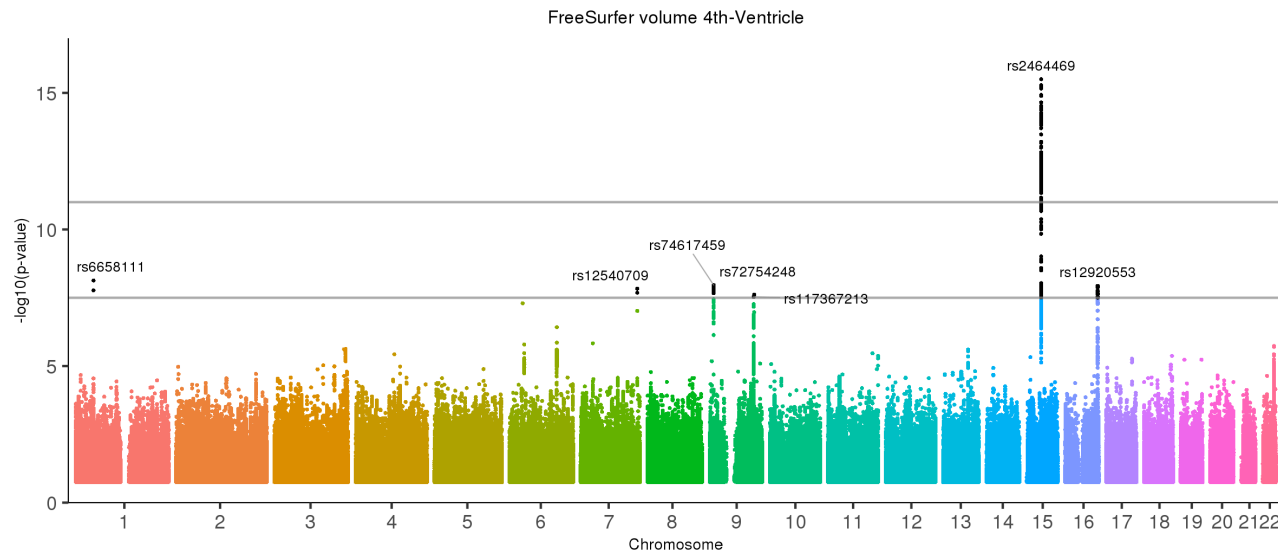
[back to list of plots](#)

Figure 22: FreeSurfer volume Left-Cerebellum-White-Matter



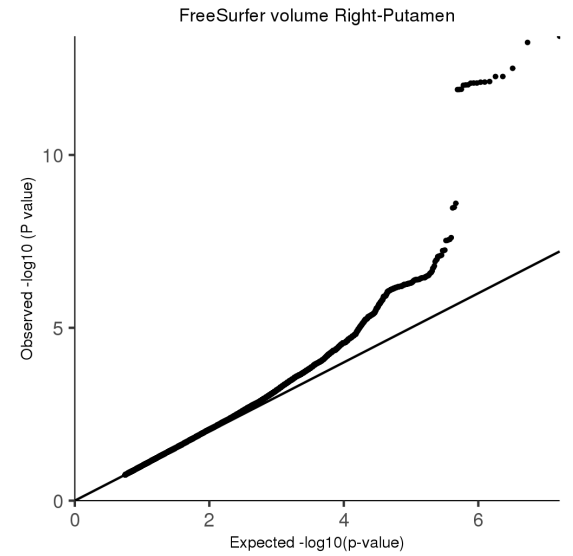
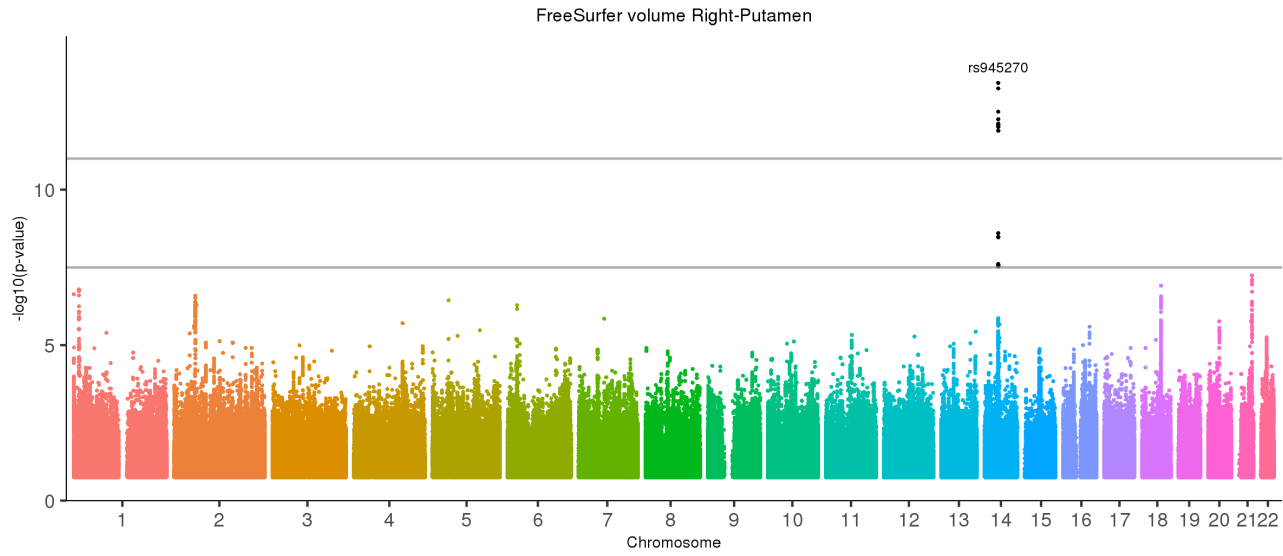
[back to list of plots](#)

Figure 23: FreeSurfer volume 4th-Ventricle



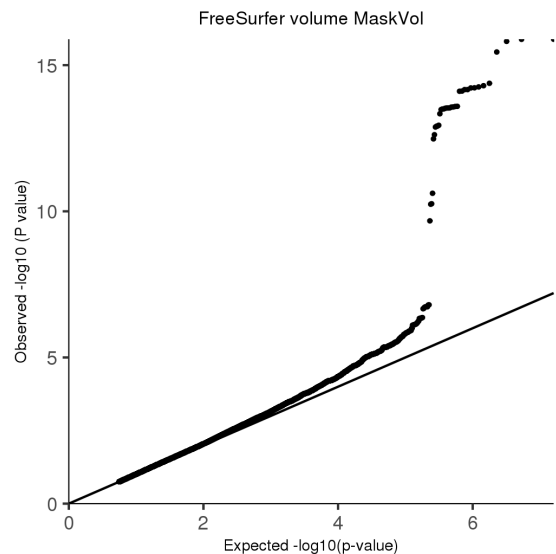
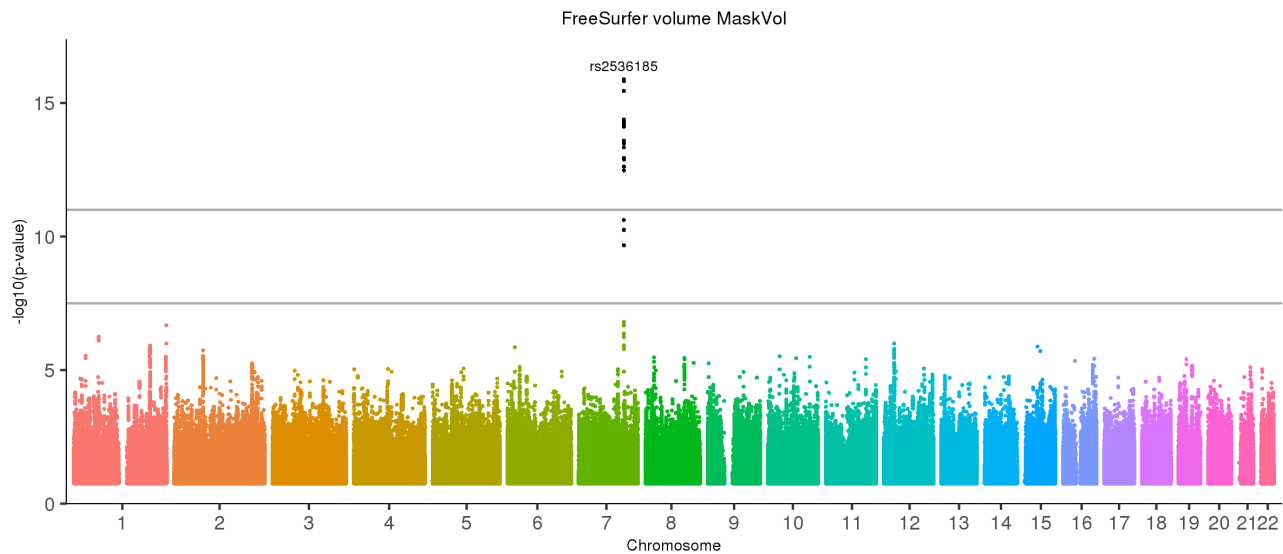
[back to list of plots](#)

Figure 24: FreeSurfer volume Right-Putamen



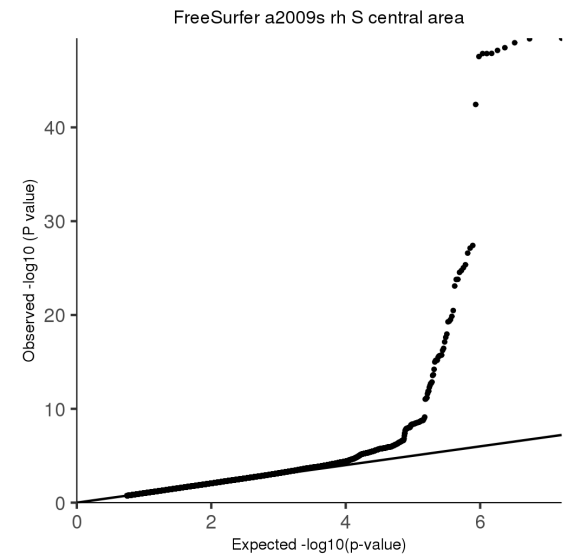
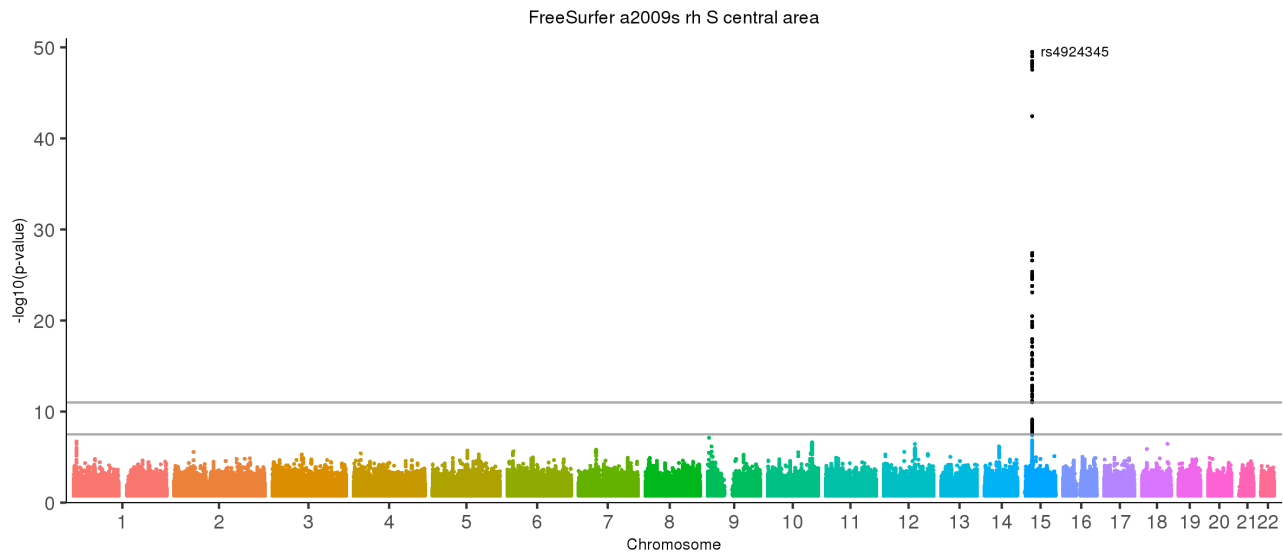
[back to list of plots](#)

Figure 25: FreeSurfer volume MaskVol



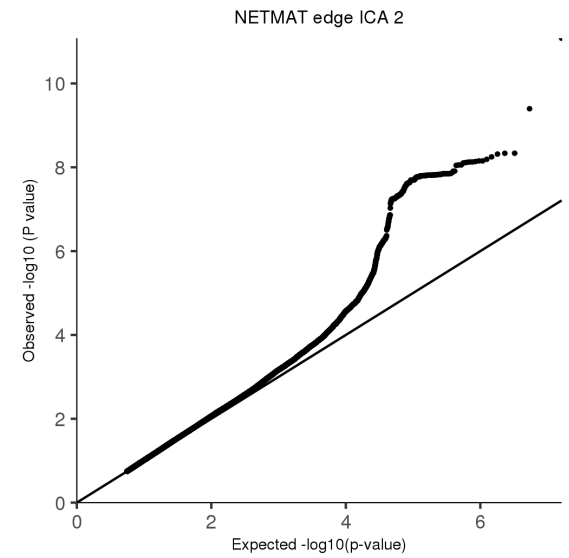
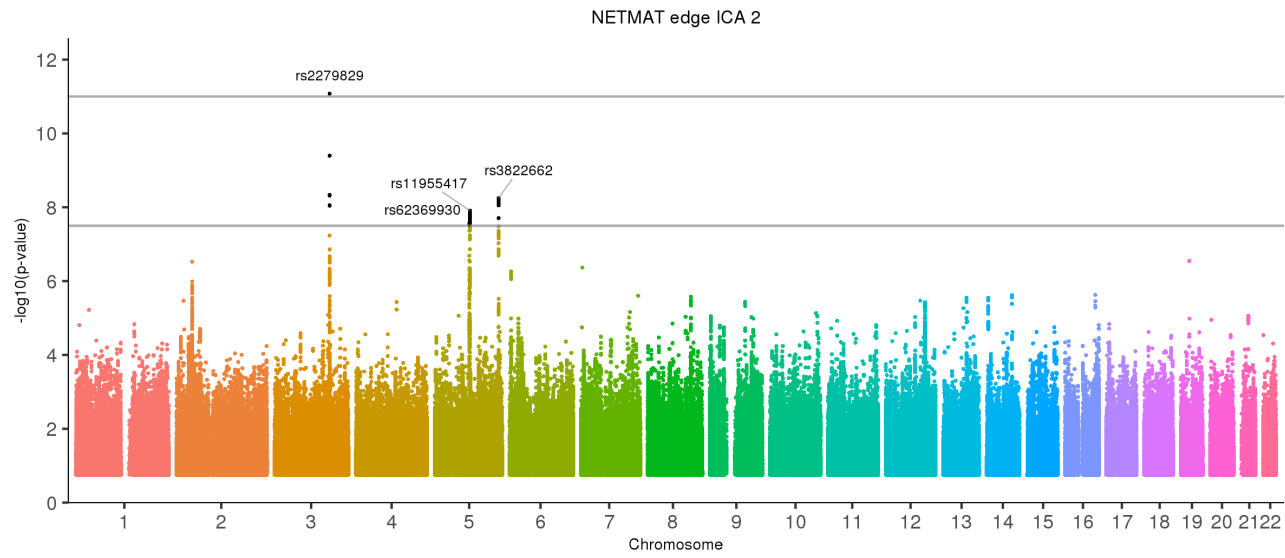
[back to list of plots](#)

Figure 26: FreeSurfer a2009s rh S central area



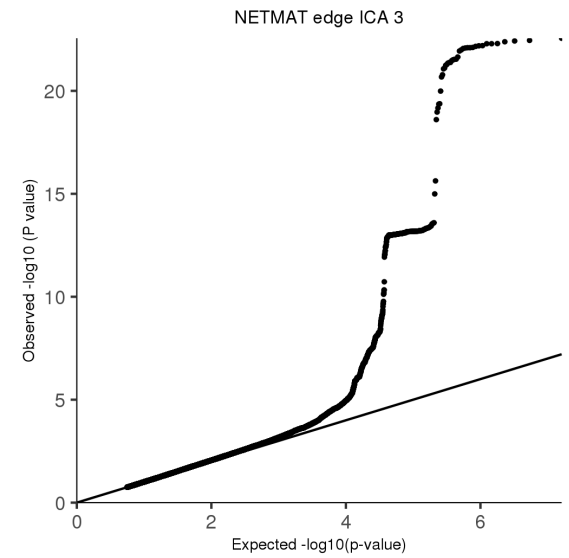
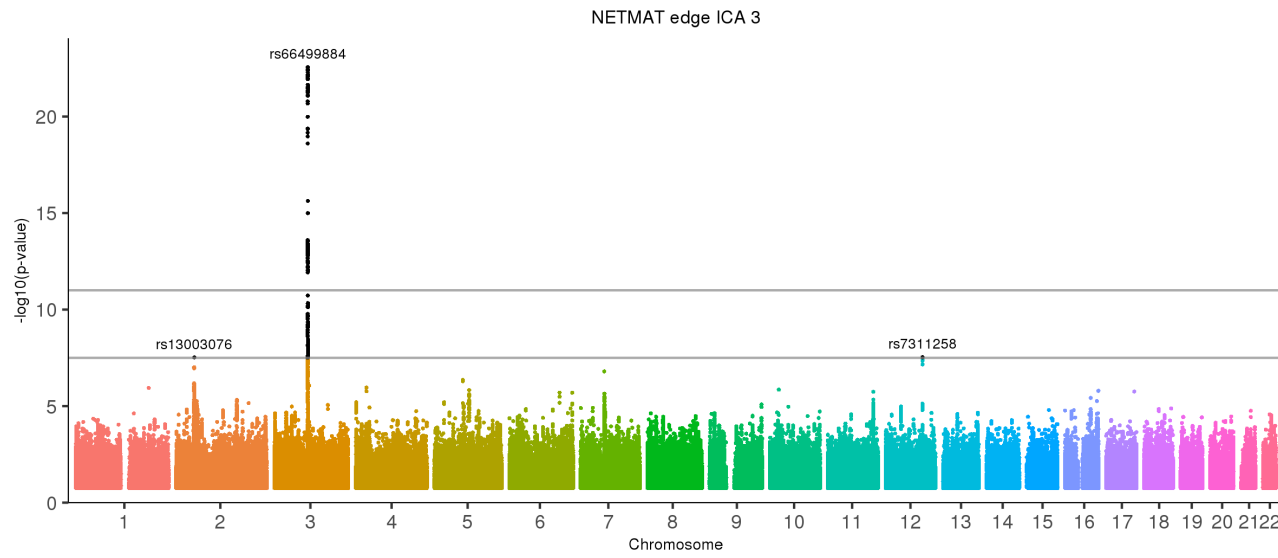
[back to list of plots](#)

Figure 27: NETMAT edge ICA 2



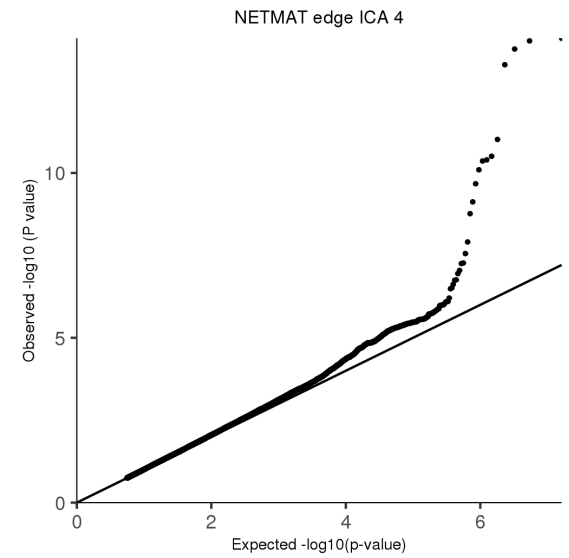
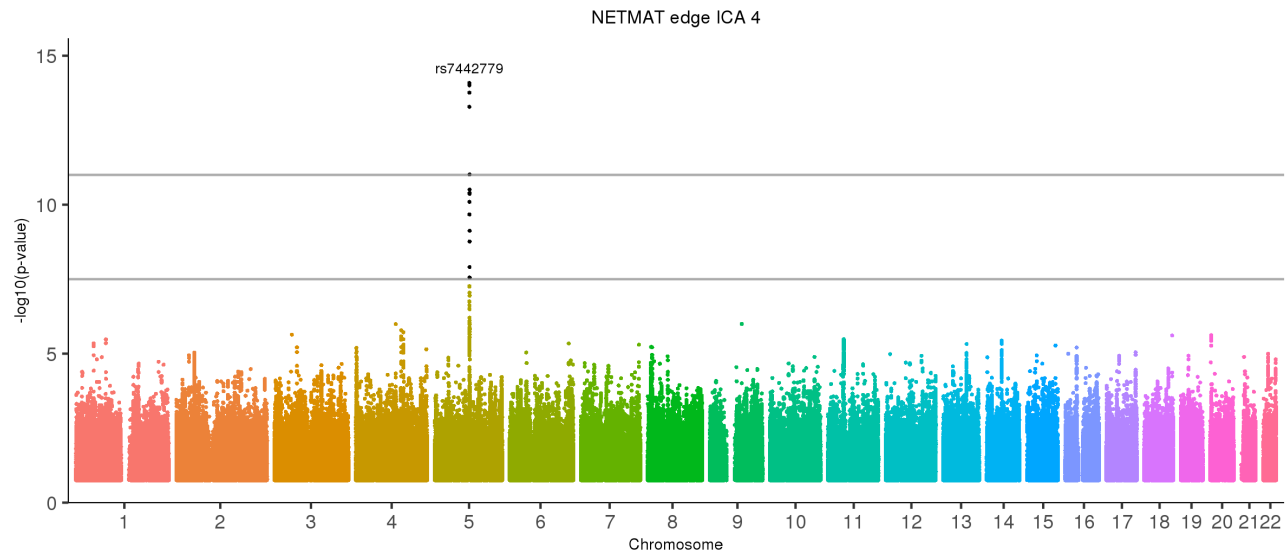
[back to list of plots](#)

Figure 28: NETMAT edge ICA 3



[back to list of plots](#)

Figure 29: NETMAT edge ICA 4



[back to list of plots](#)