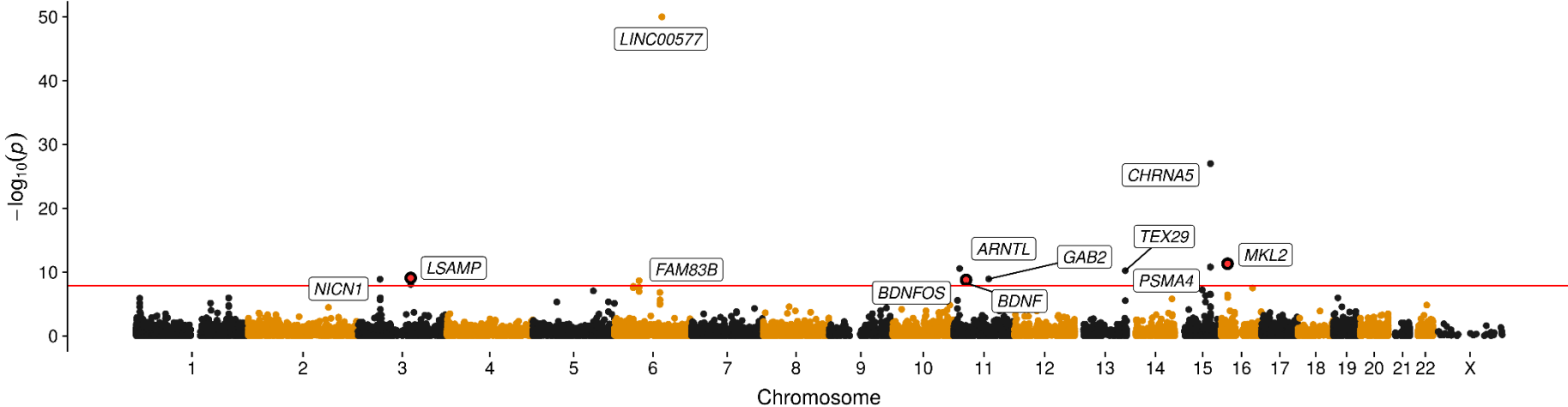


Figure legend

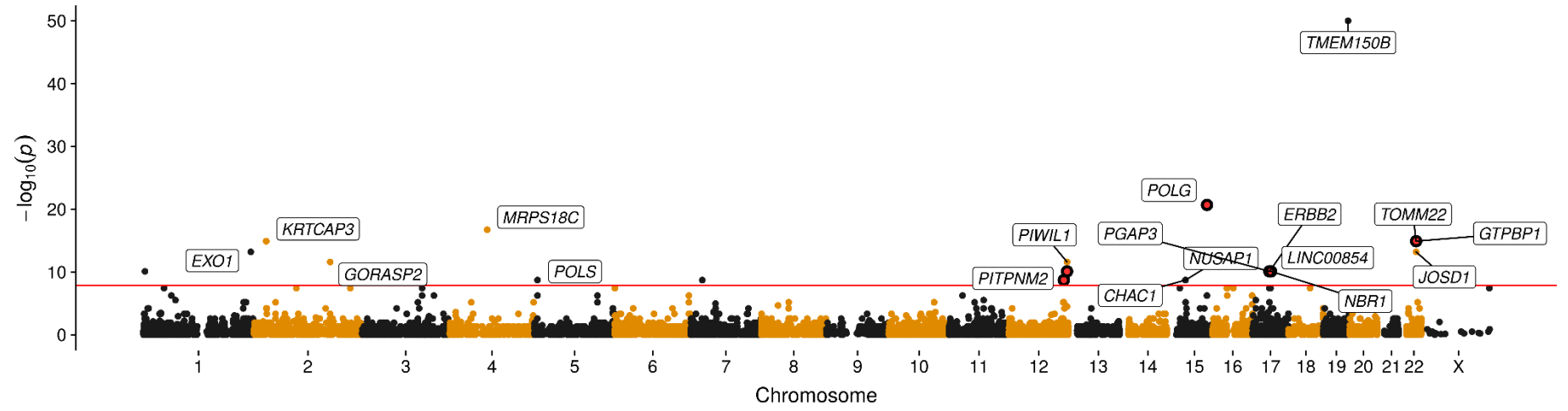
These Manhattan plots illustrate results from evaluating the causal influence of DNA methylation on complex traits using genetic variants as instruments. All points correspond to p-values derived from the Mendelian randomization analysis as described in the manuscript. Points which are highlighted mean that these effects provided evidence that the same underlying genetic variation was observed to influence both methylation and trait at this locus using the joint likelihood mapping method. Plots are coloured depending on the subcategory that the analysed traits has been allocated to, as there is more likely to be shared loci across traits within the same category. P-values have been capped at 1×10^{-50} to ensure plots remain legible.

Aging

Age at menarche

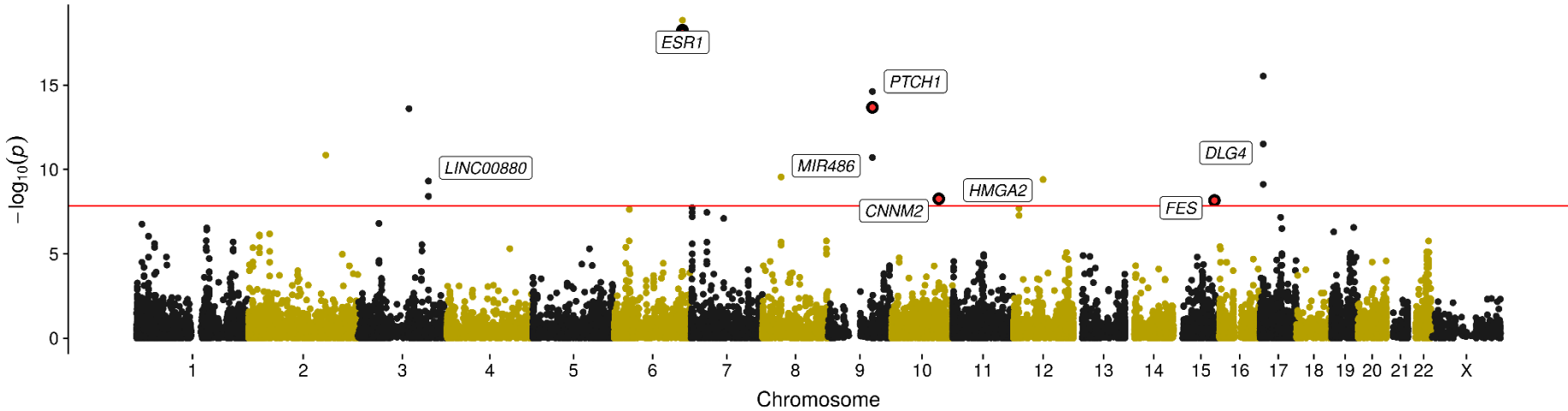


Age at menopause

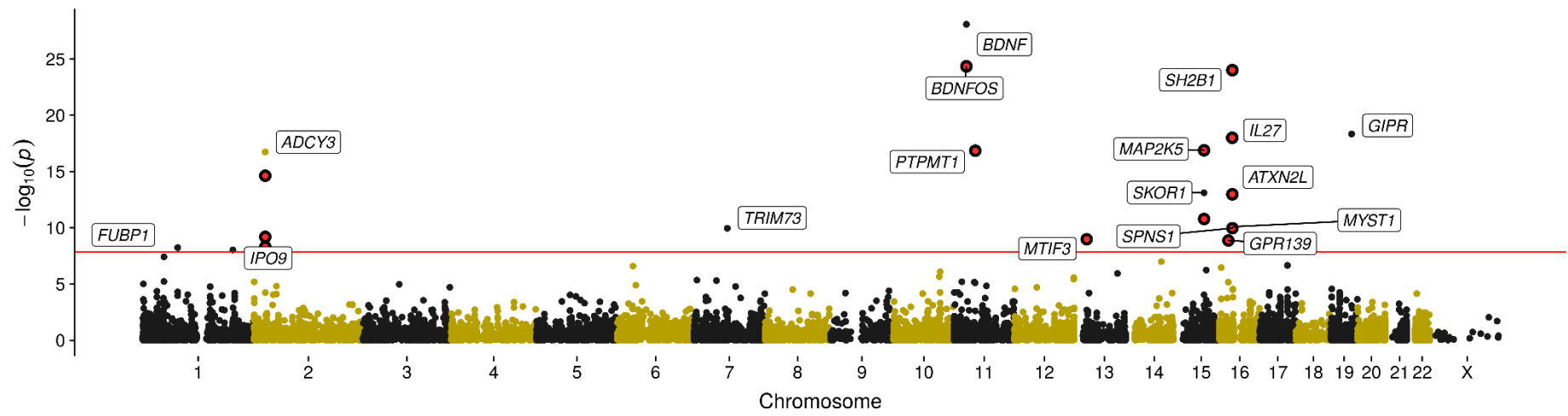


Anthropometric

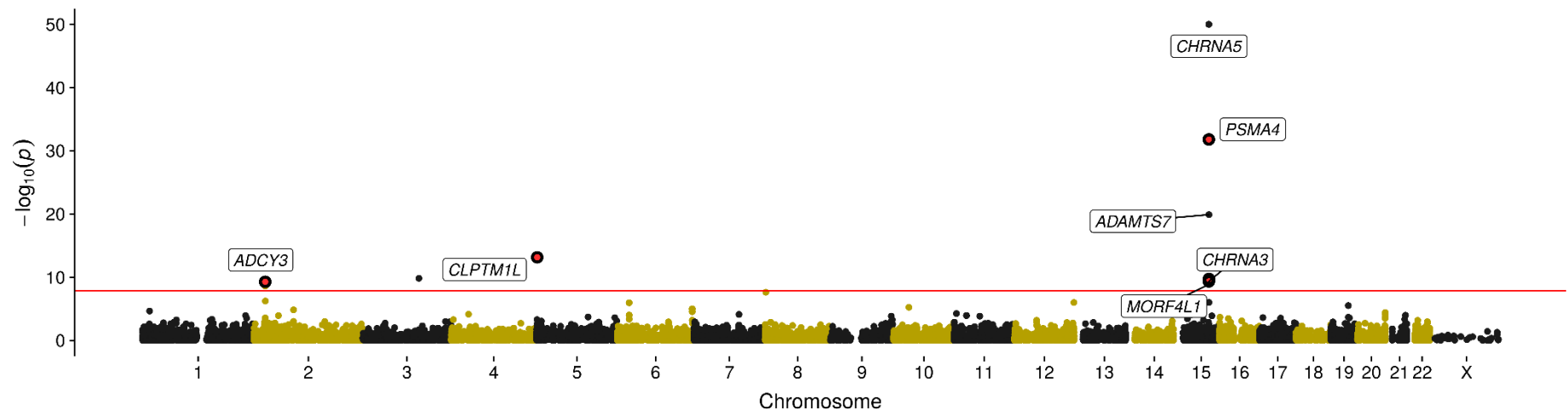
Birth weight



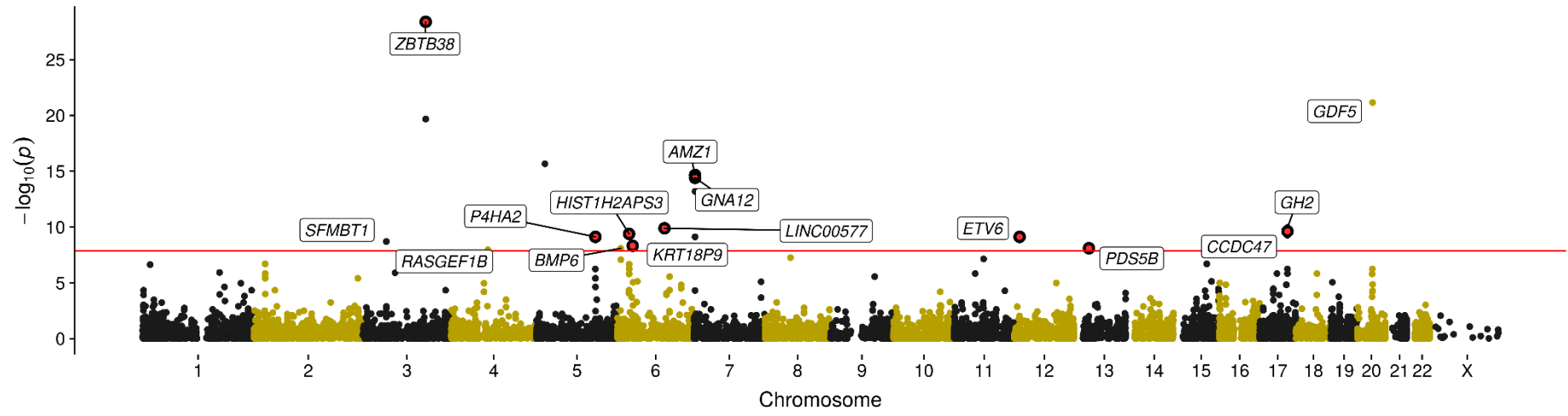
Body mass Index



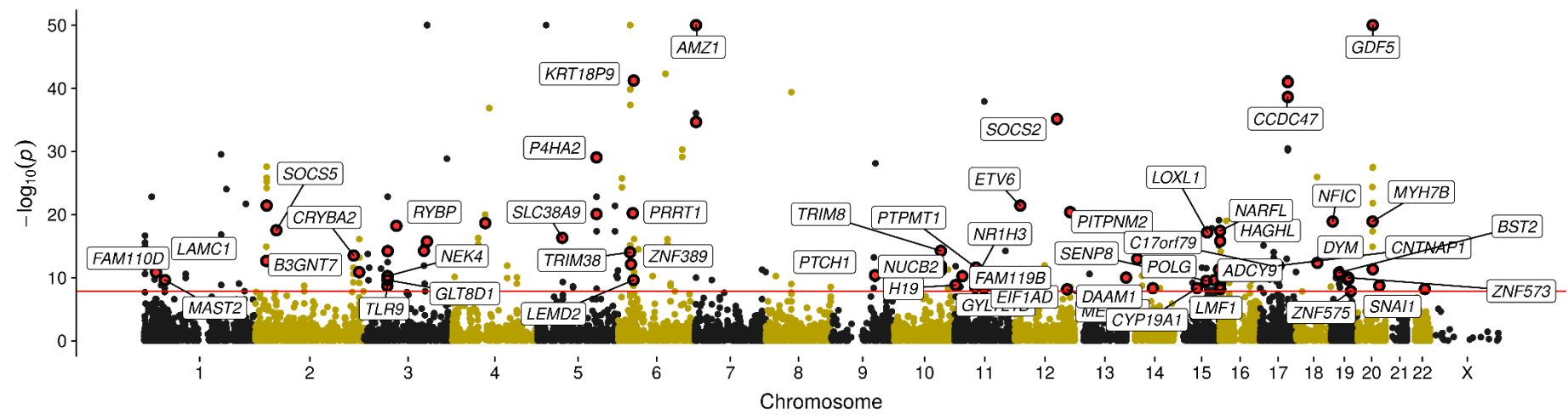
Childhood obesity



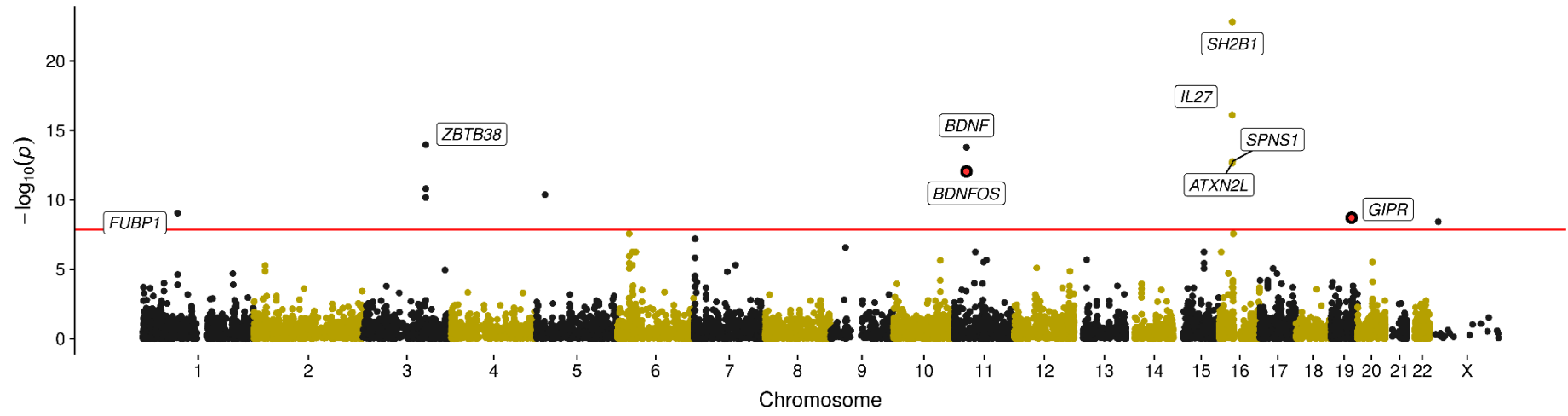
Extreme height



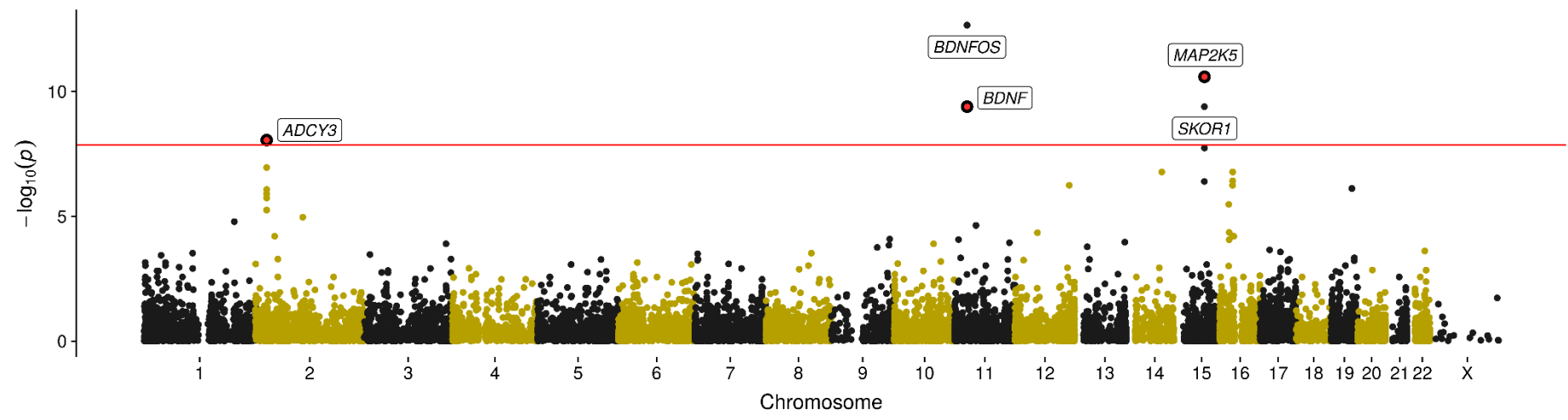
Height



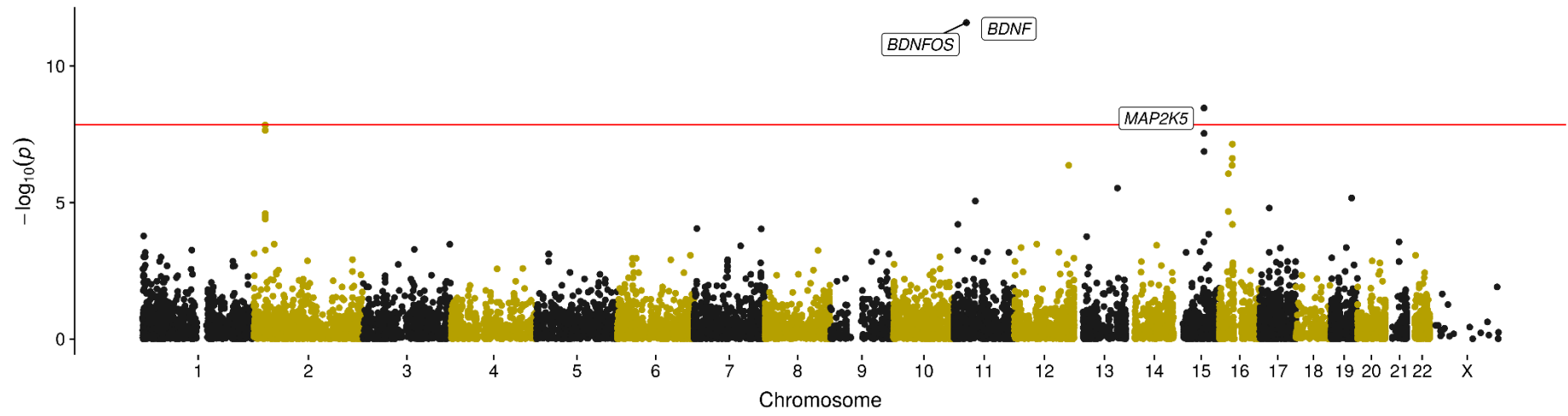
Hip circumference



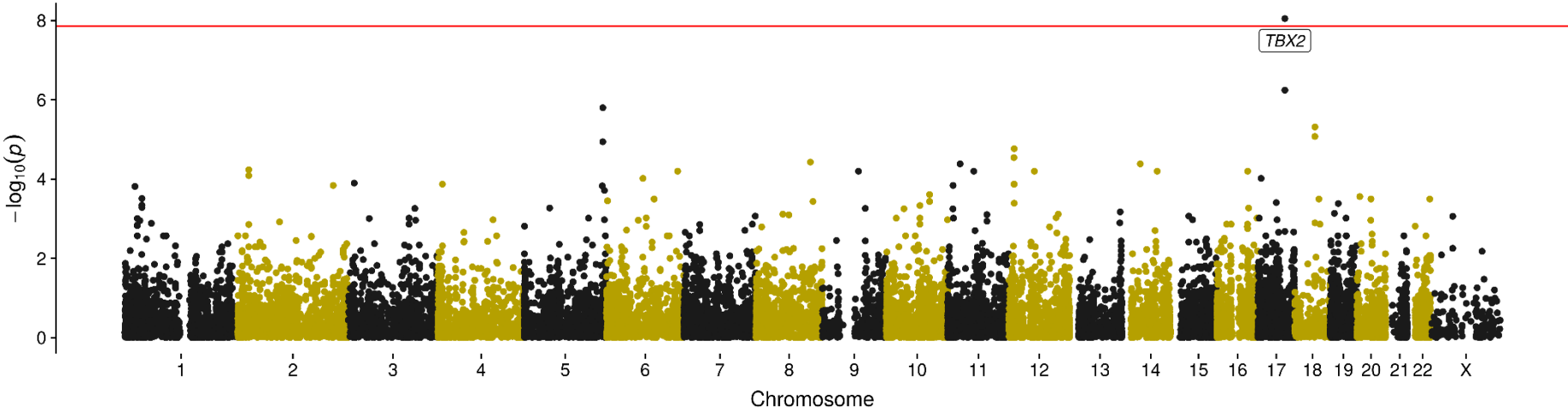
Obesity



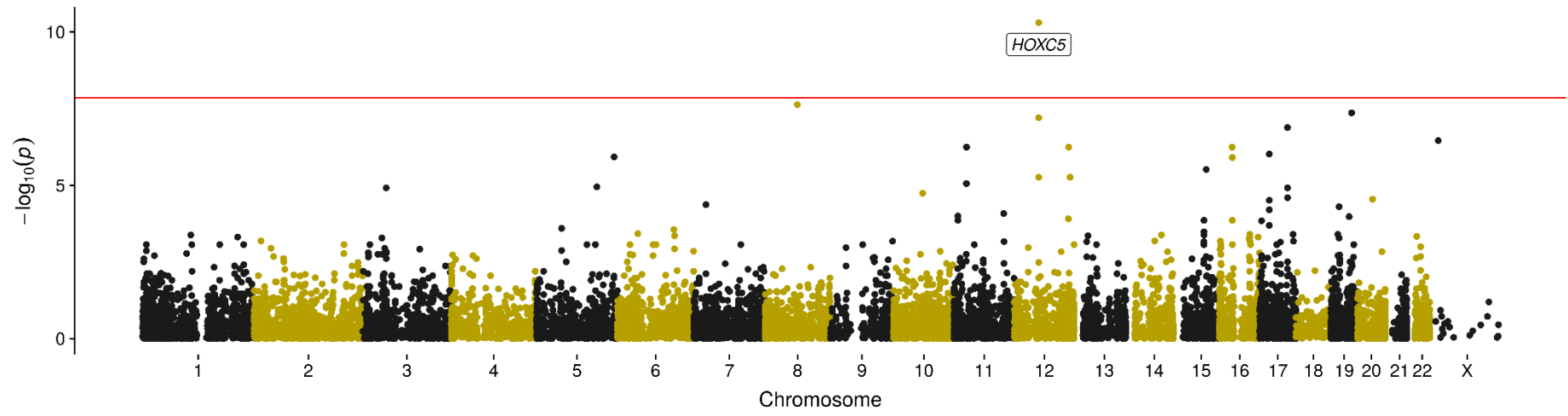
Overweight



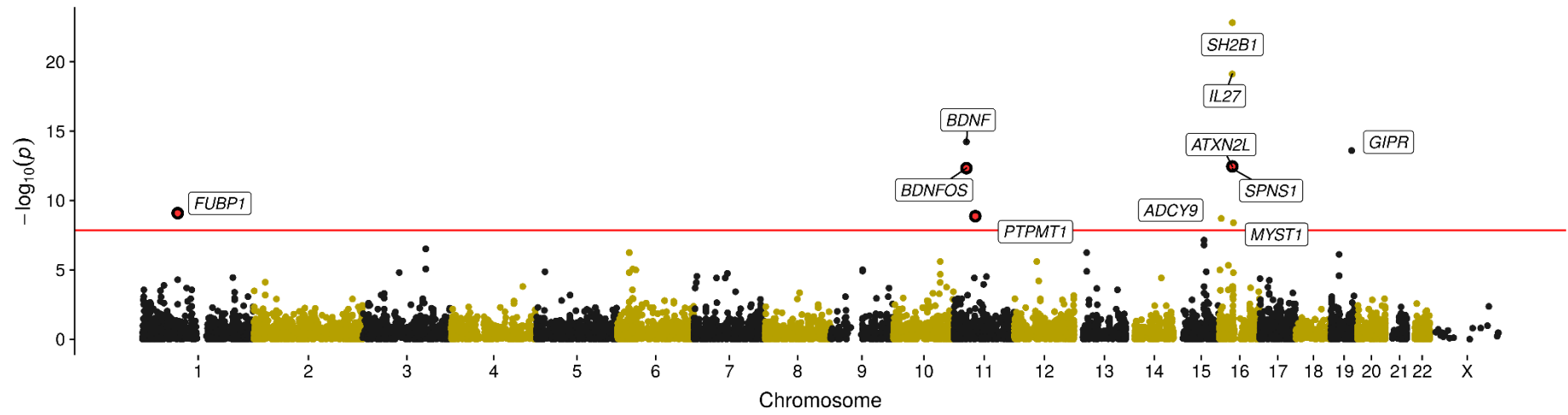
Sitting height ratio



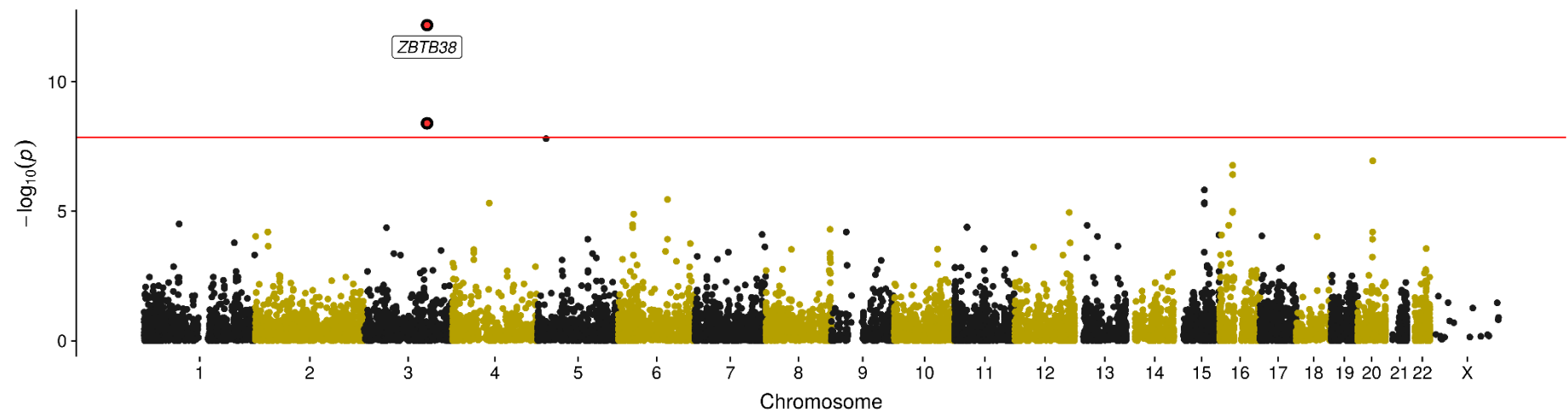
Waist-to-hip ratio



Waist circumference

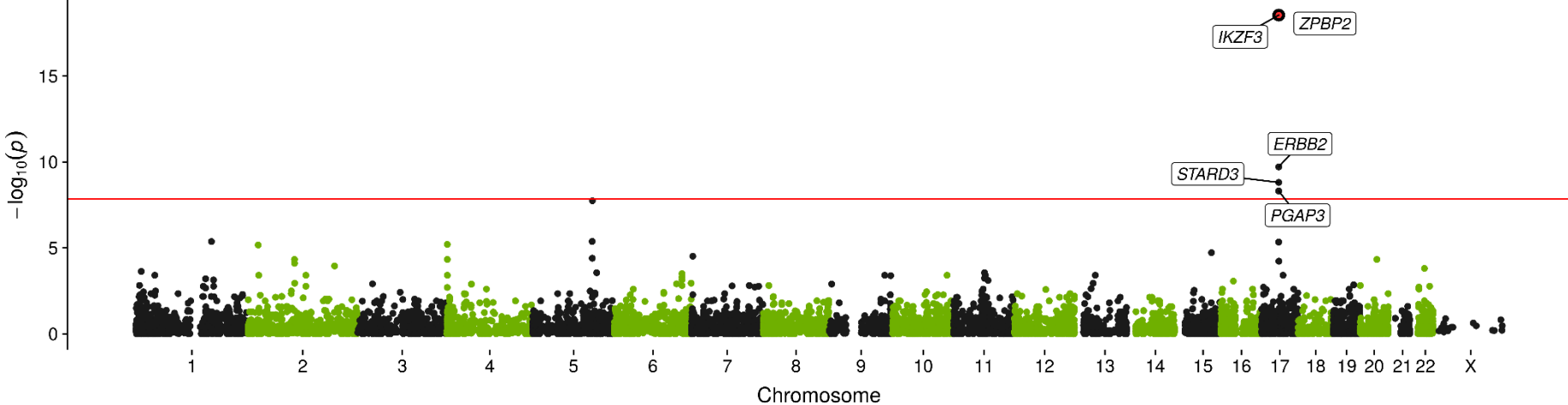


Weight

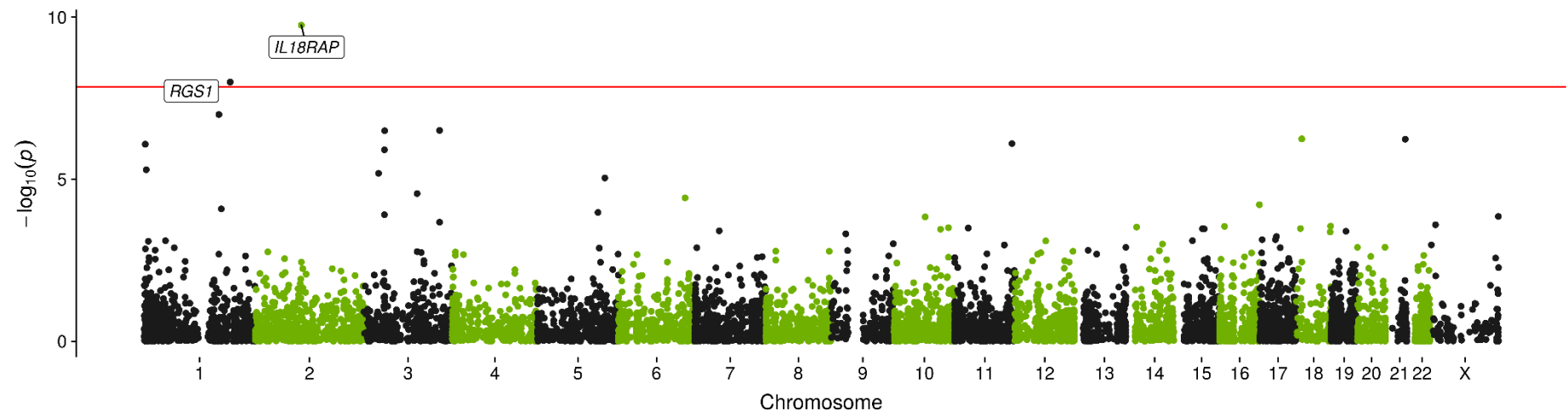


Autoimmune / inflammatory

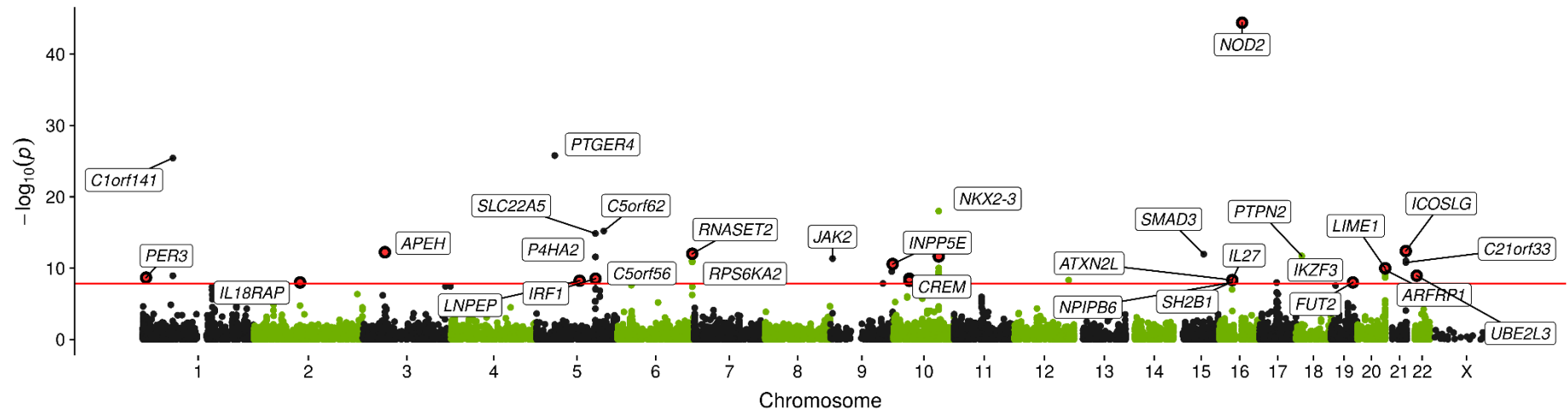
Asthma



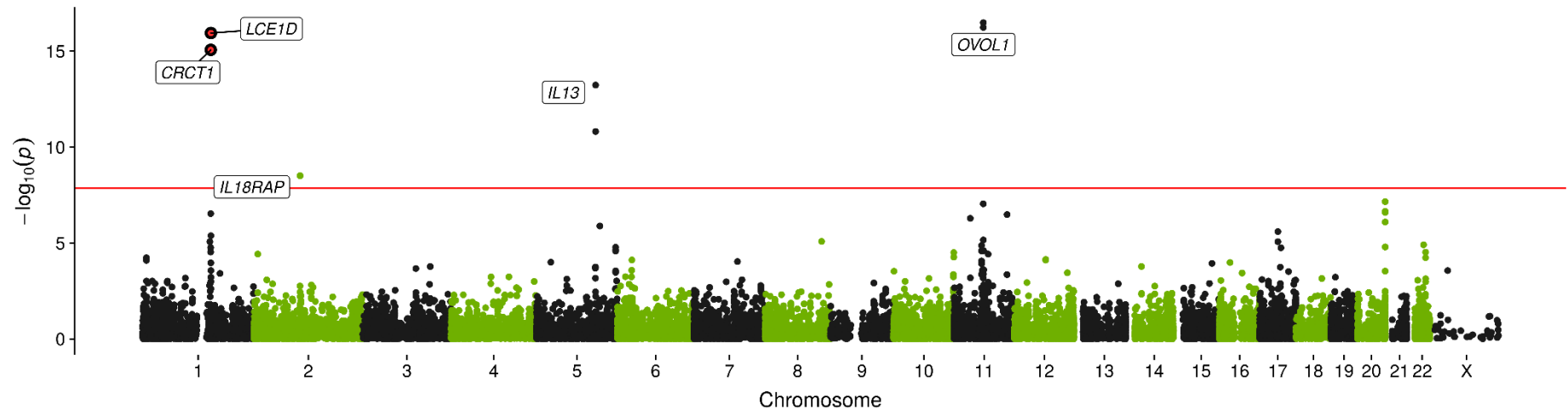
Celiac disease



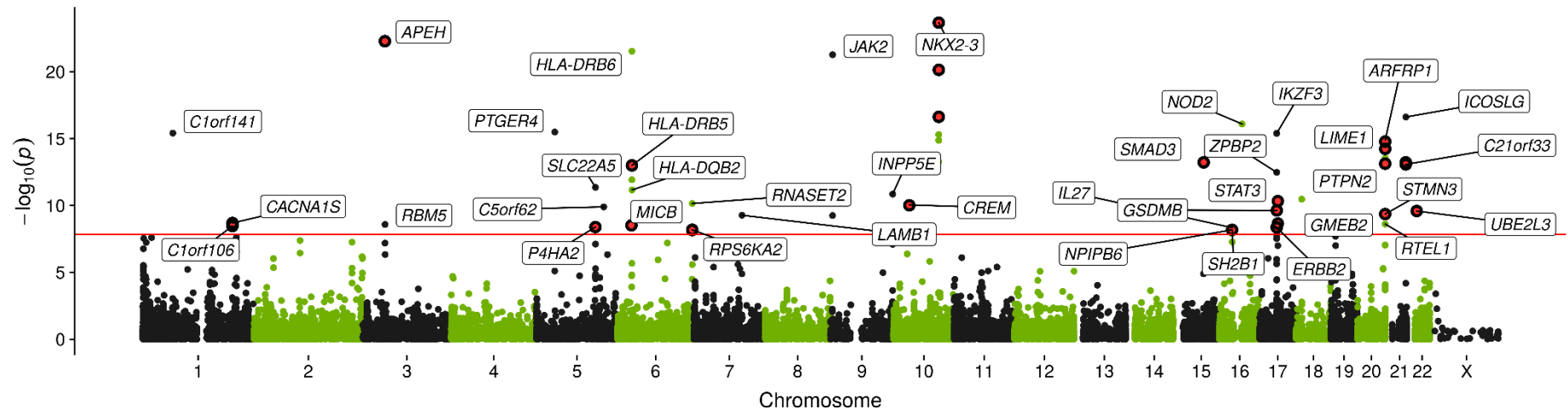
Crohn's disease



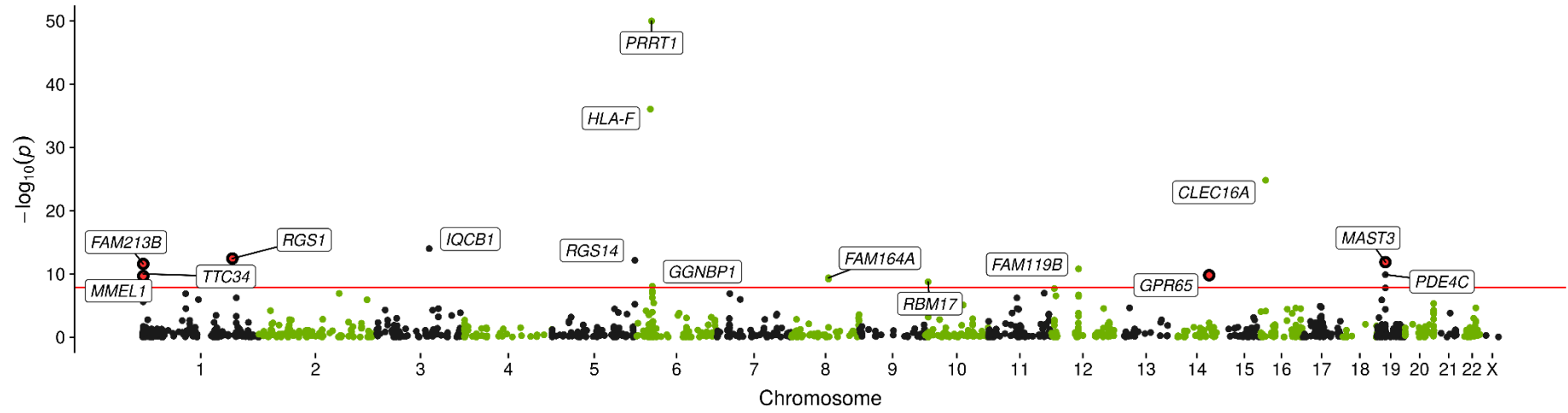
Eczema



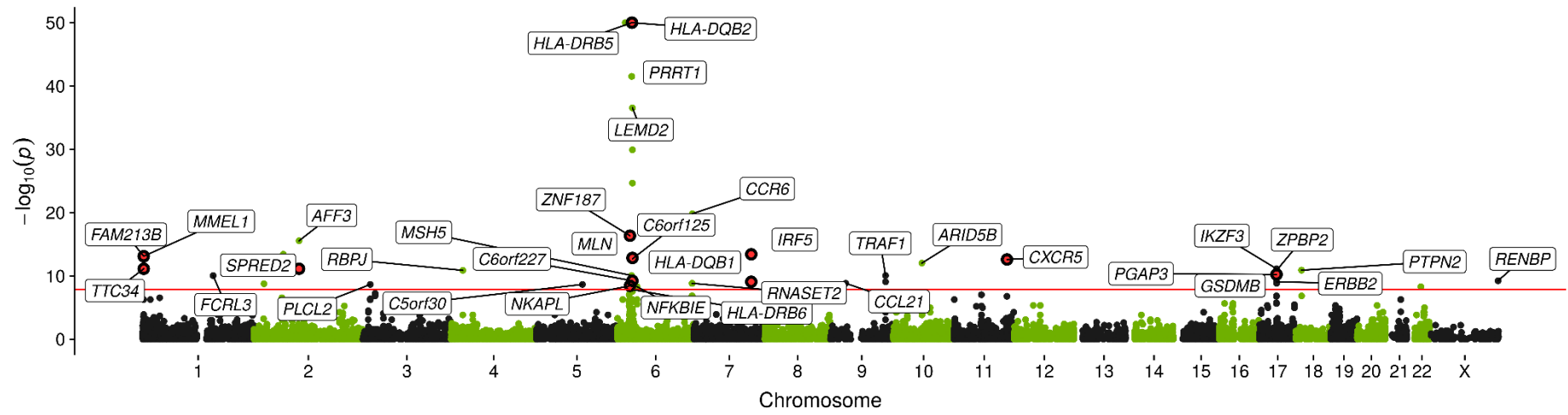
Inflammatory bowel disease



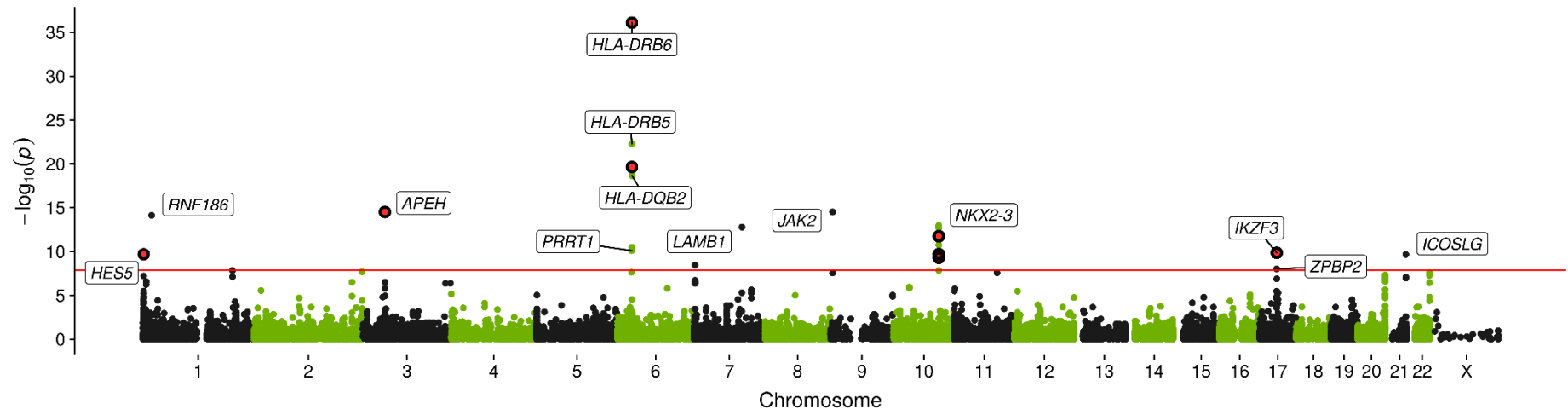
Multiple sclerosis



Rheumatoid arthritis

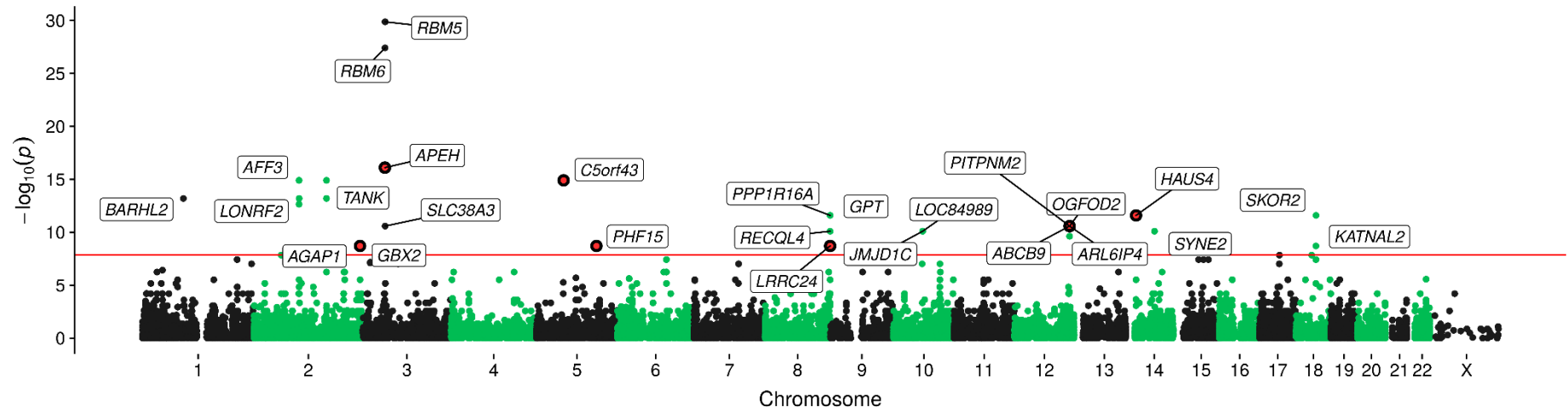


Ulcerative colitis



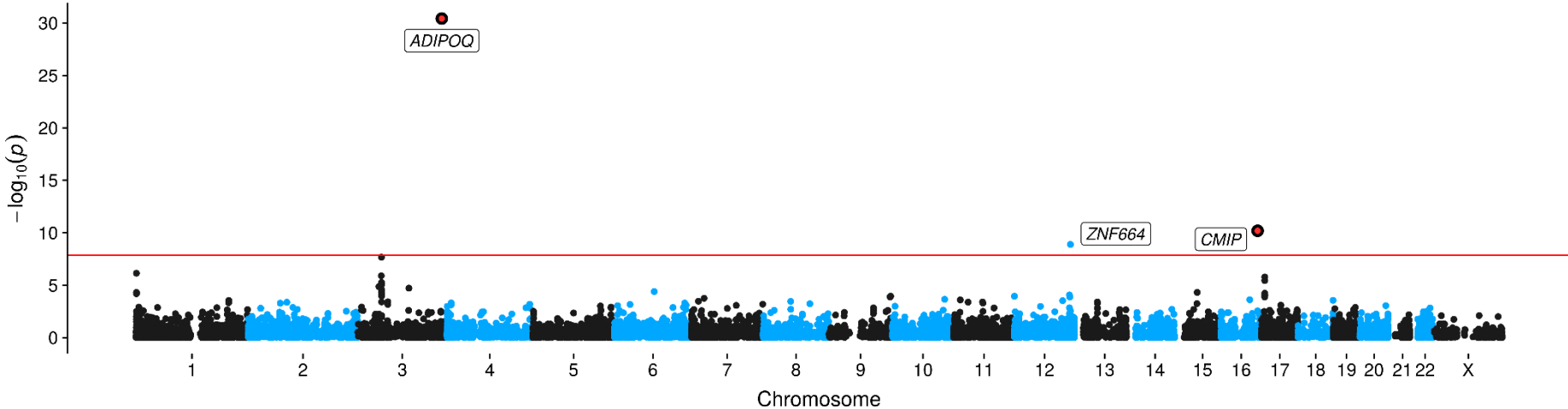
Education

Years of Schooling

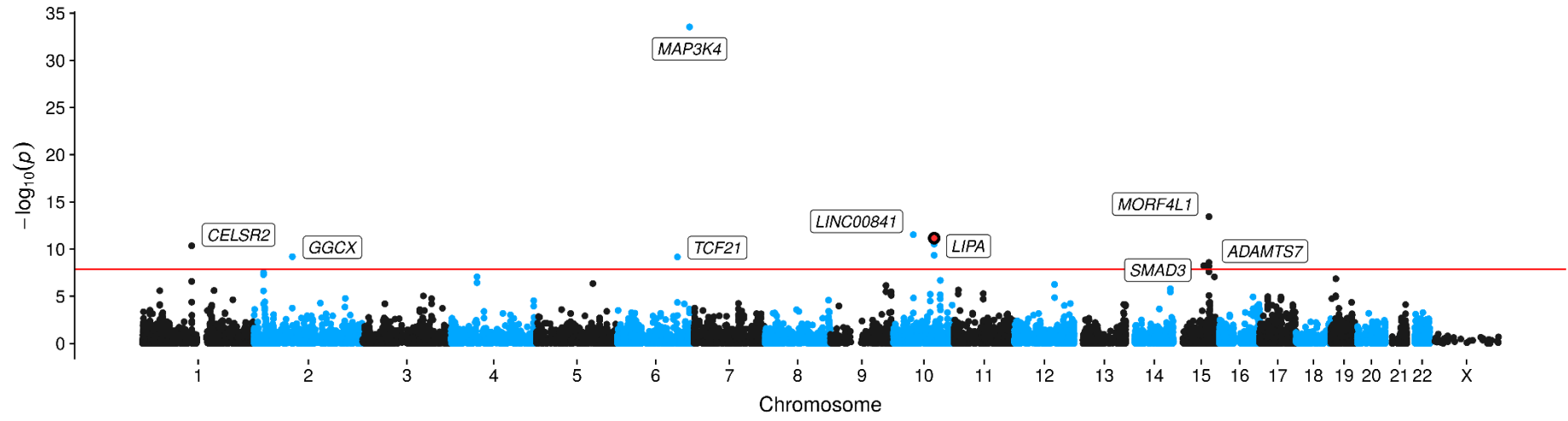


Cardiovascular

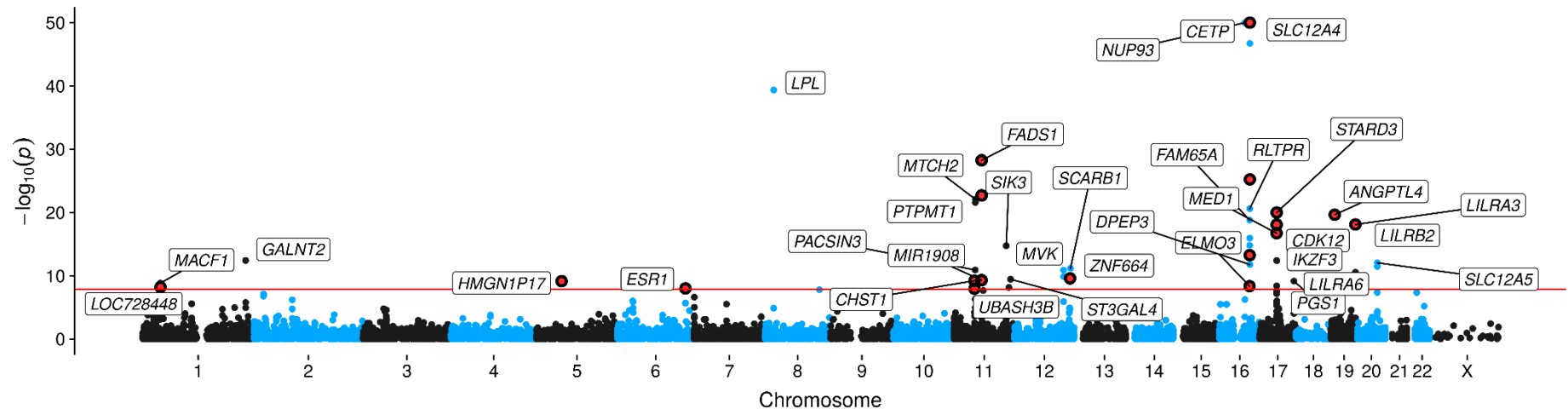
Adiponectin



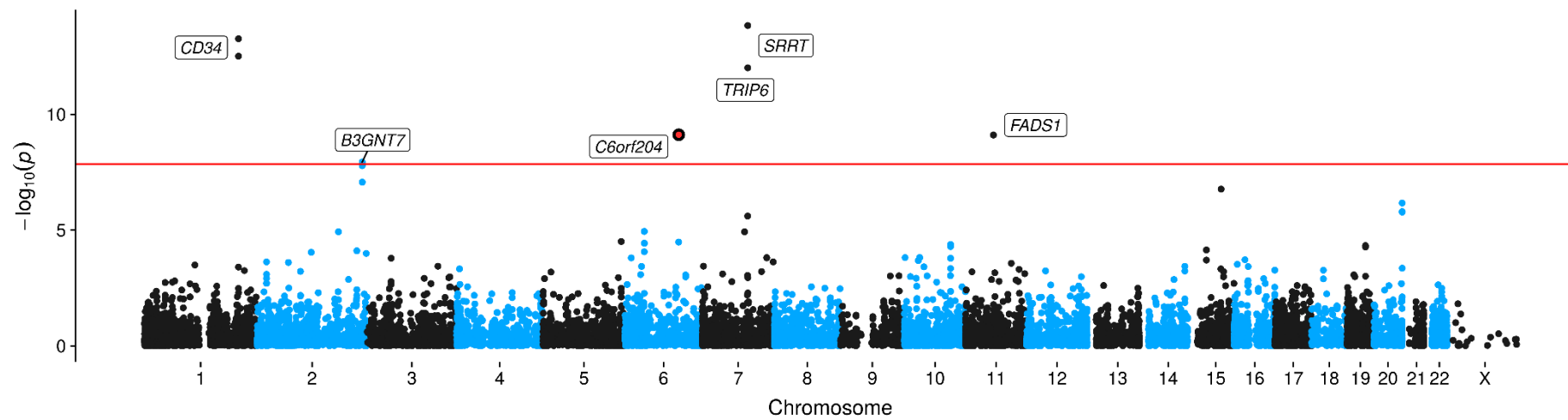
Coronary heart disease



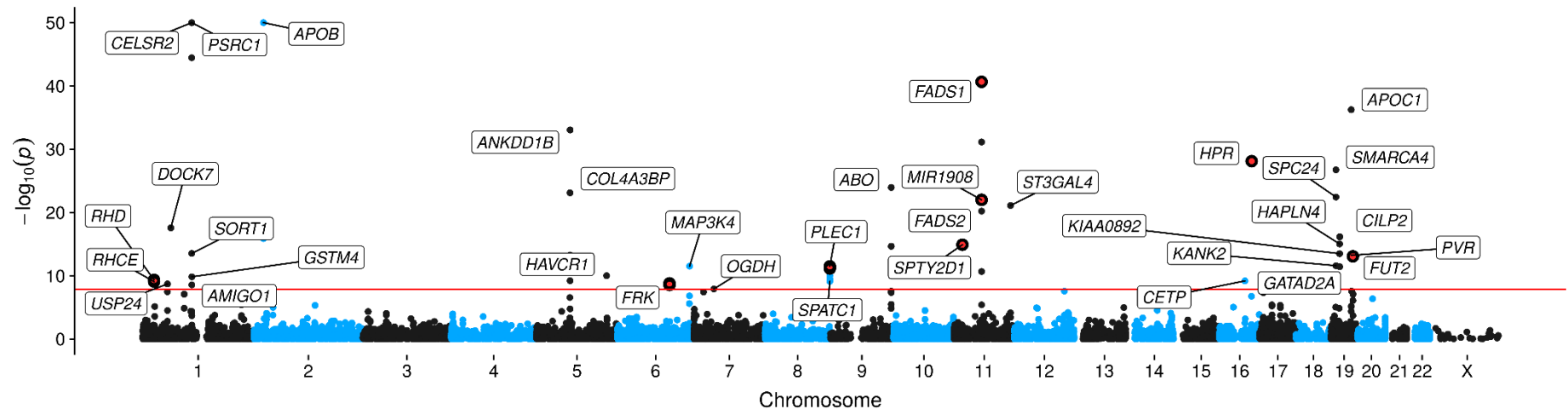
HDL Cholesterol



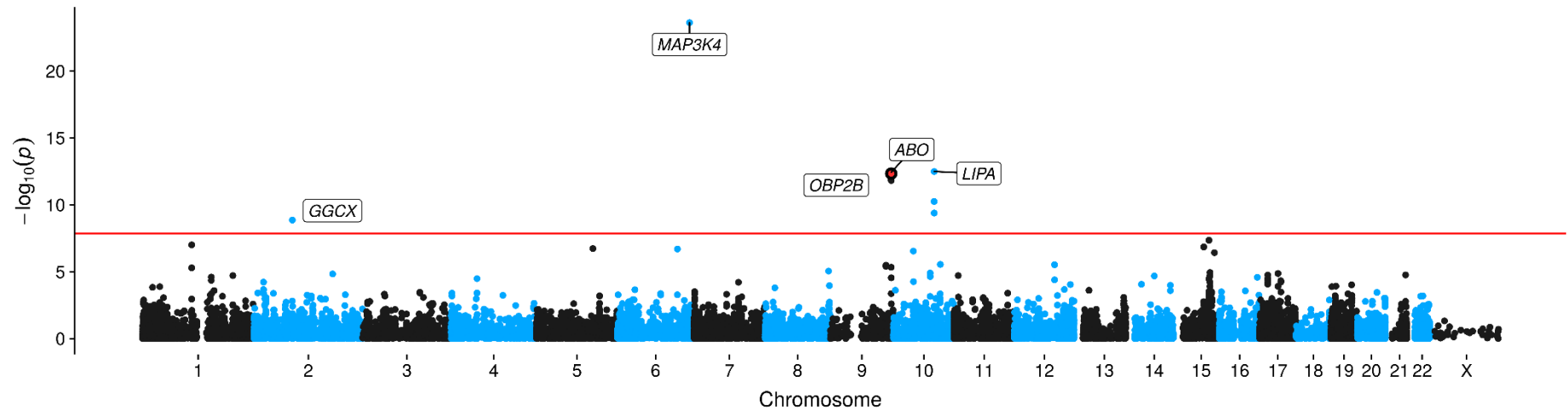
Heart rate



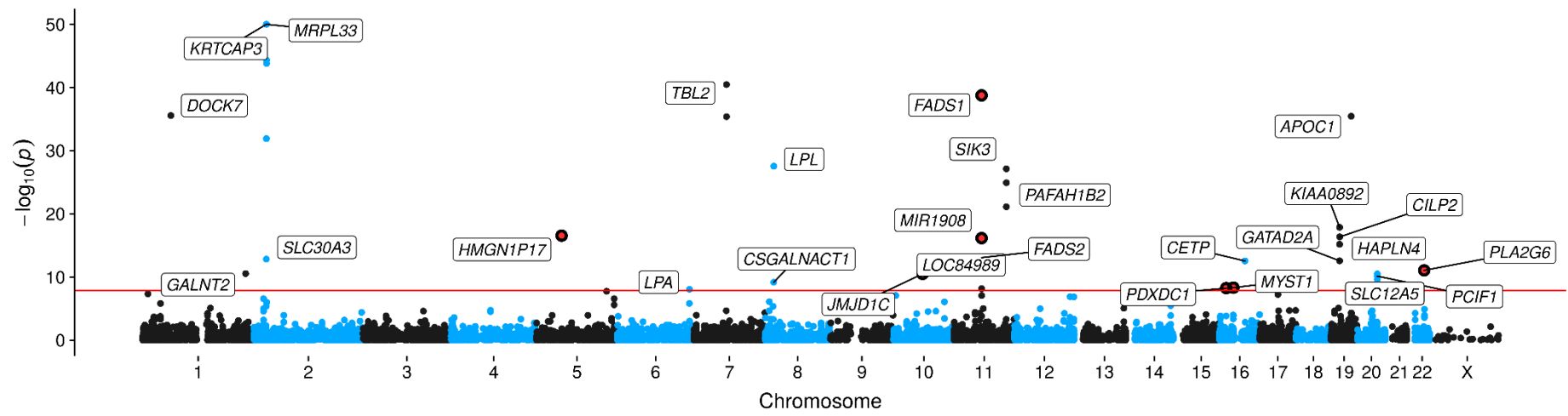
LDL Cholesterol



Myocardial Infarction

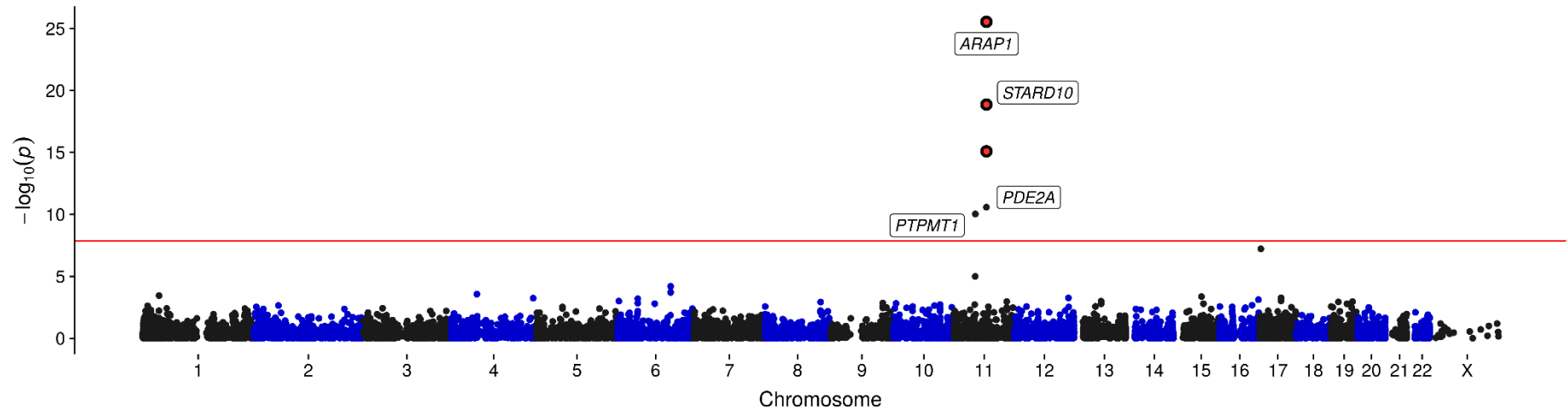


Triglycerides

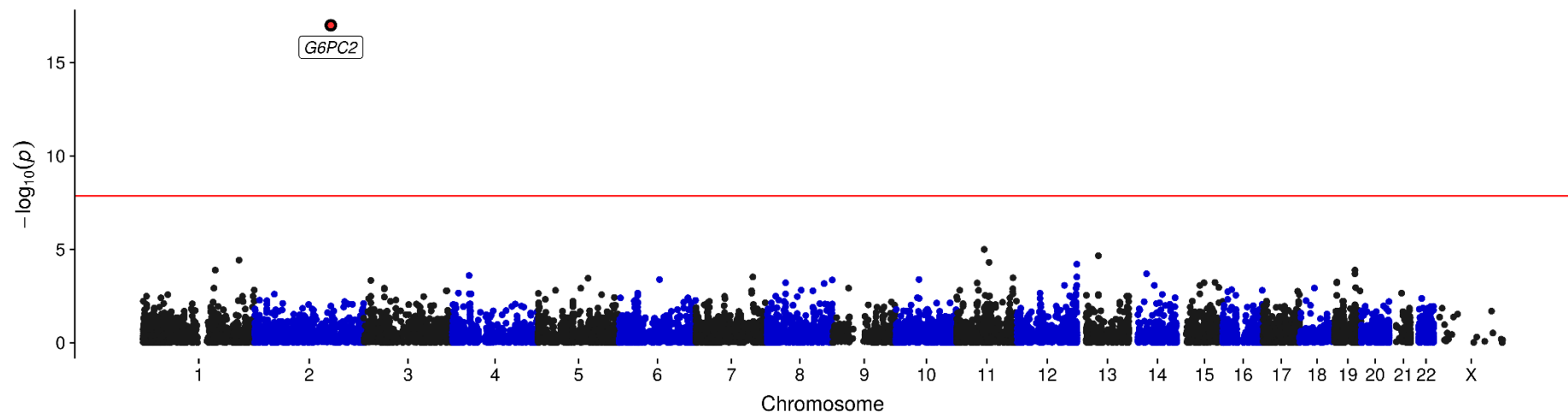


Glycemic

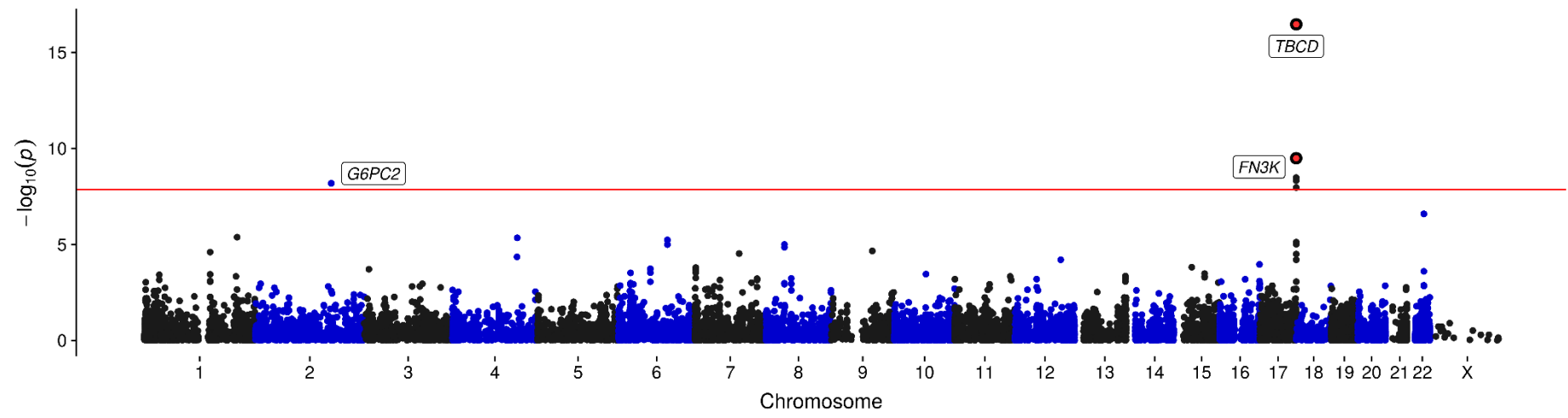
Fasting proinsulin



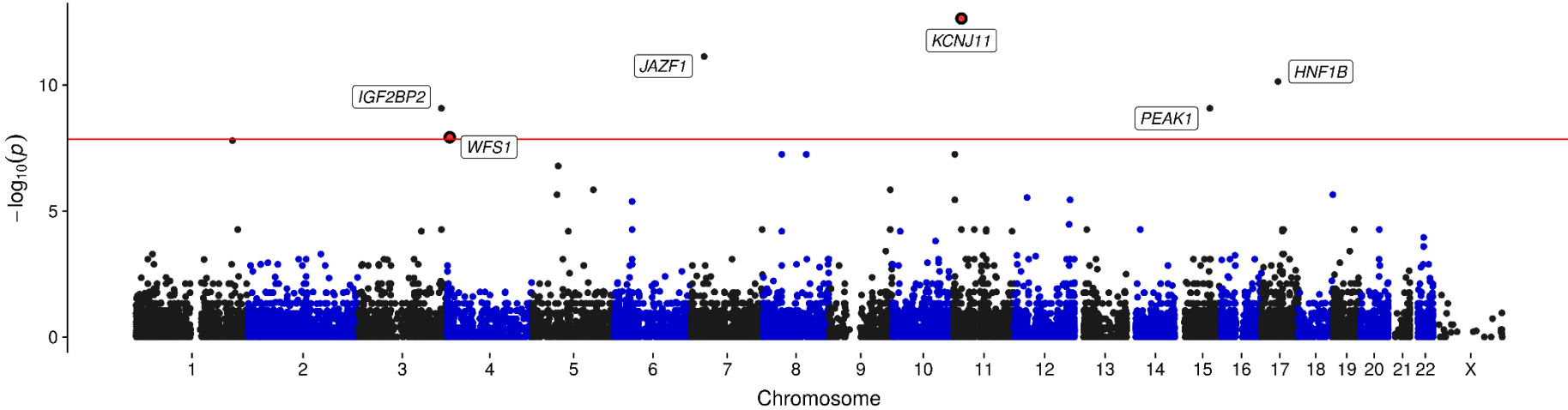
HOMA-B



HbA1C

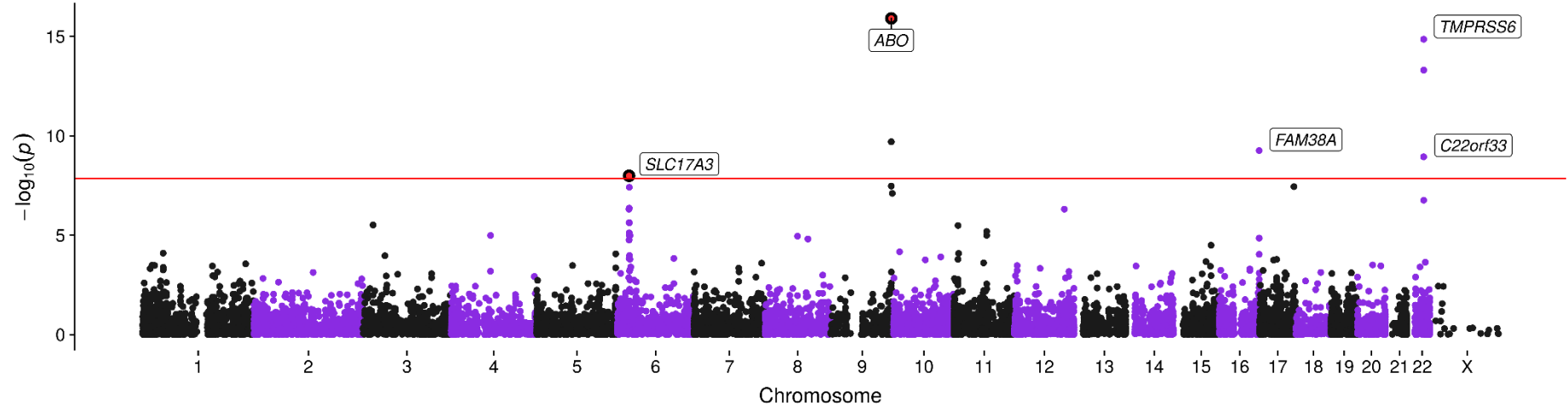


Type 2 diabetes

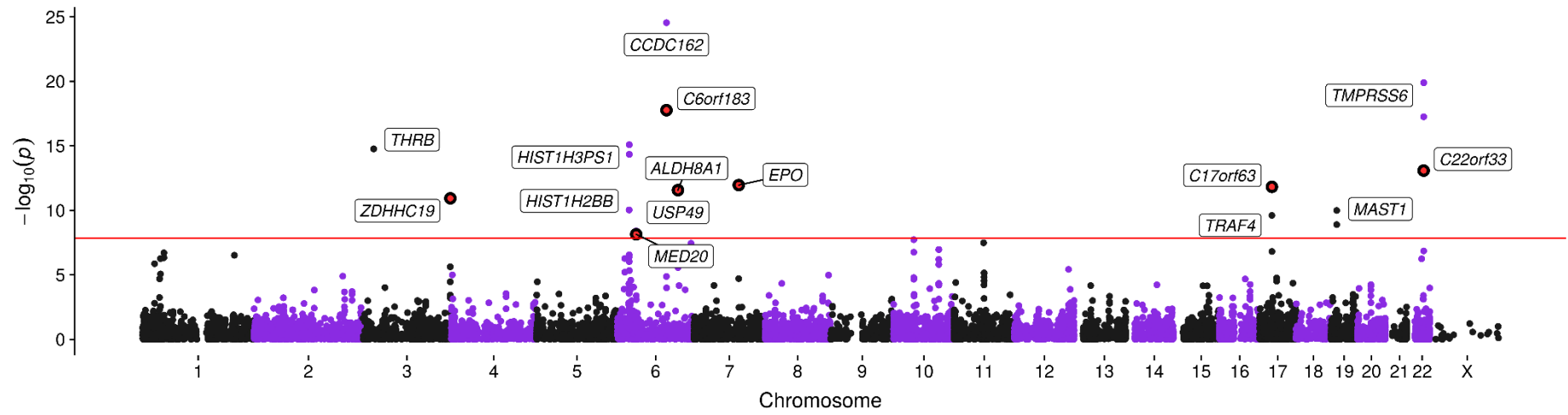


Haematological

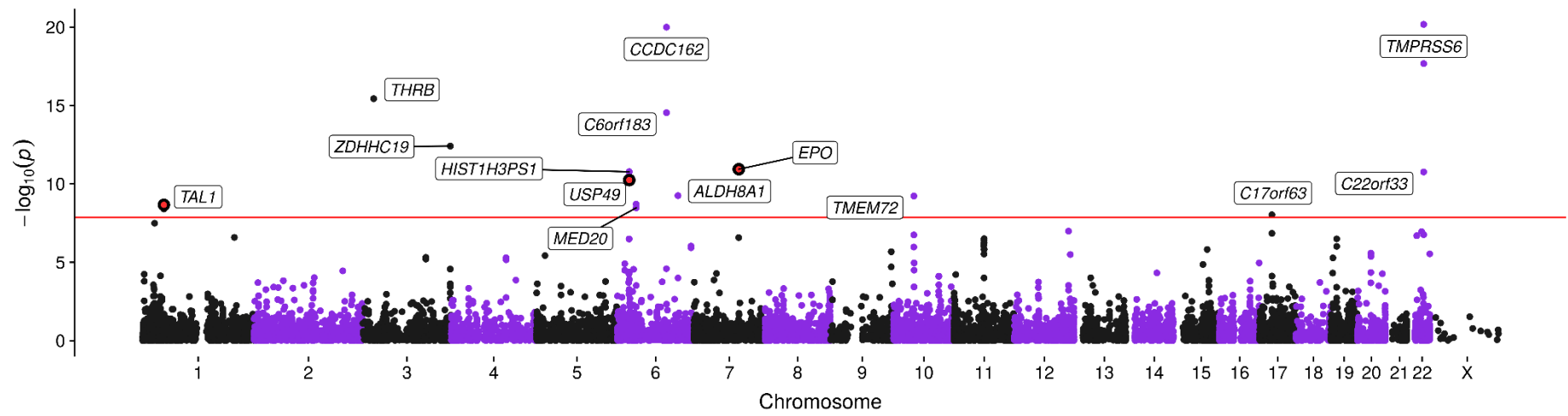
Haemoglobin concentration



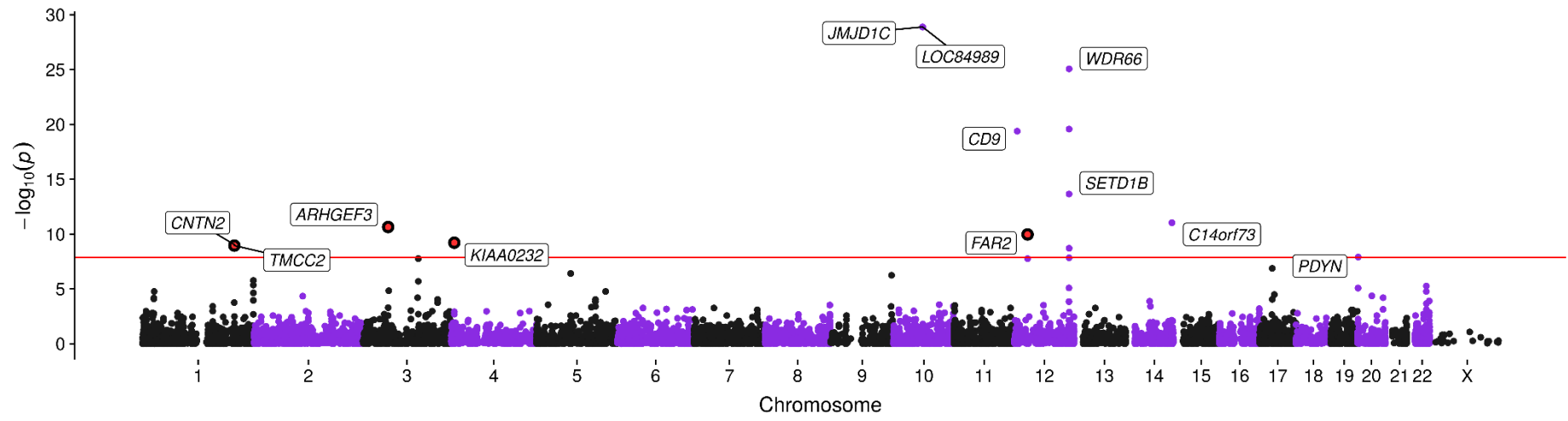
Mean cell haemoglobin



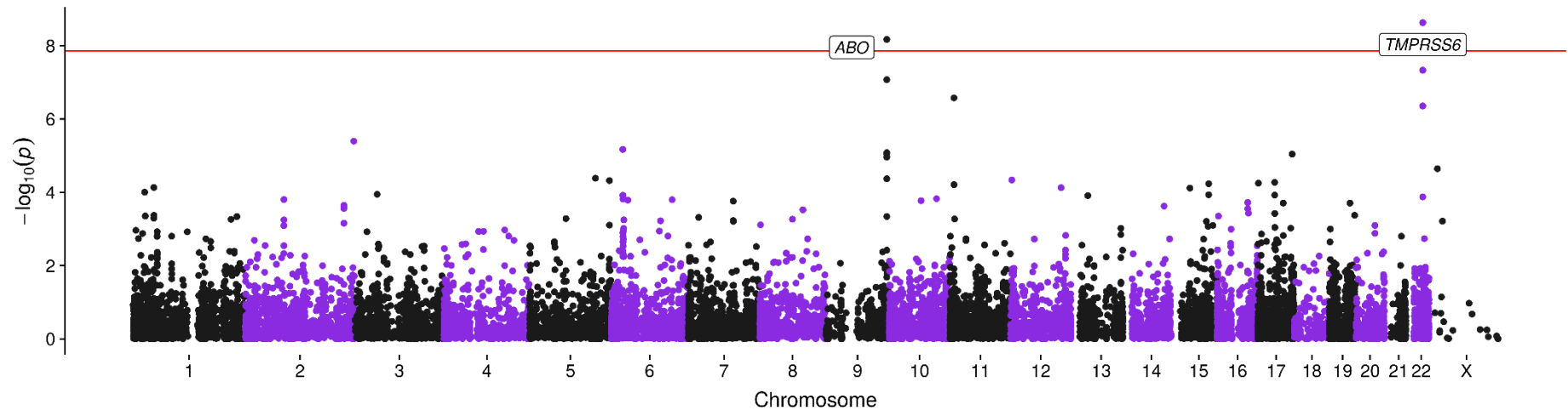
Mean cell volume



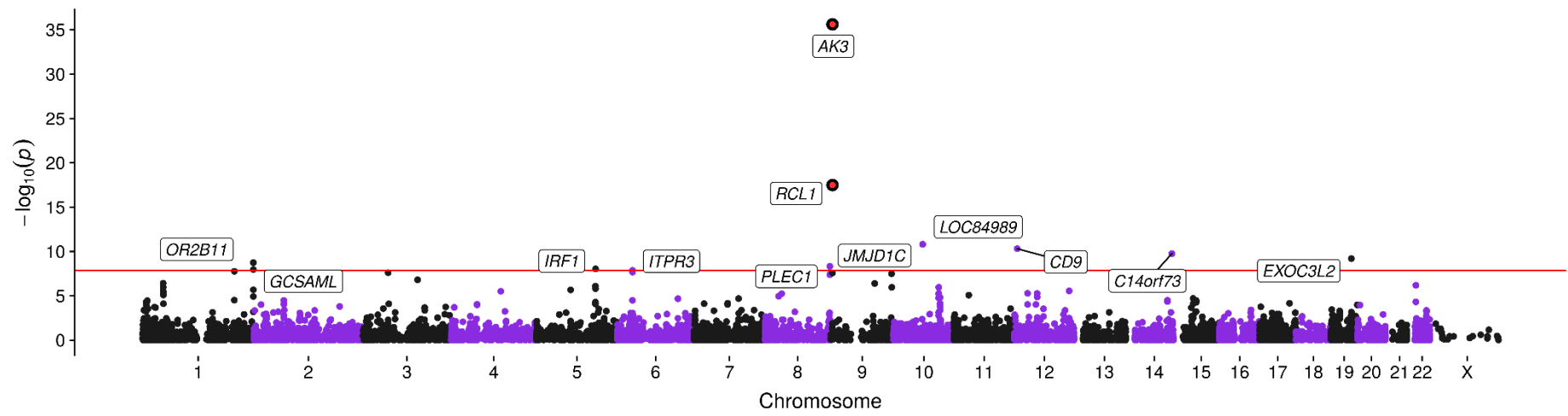
Mean platelet volume



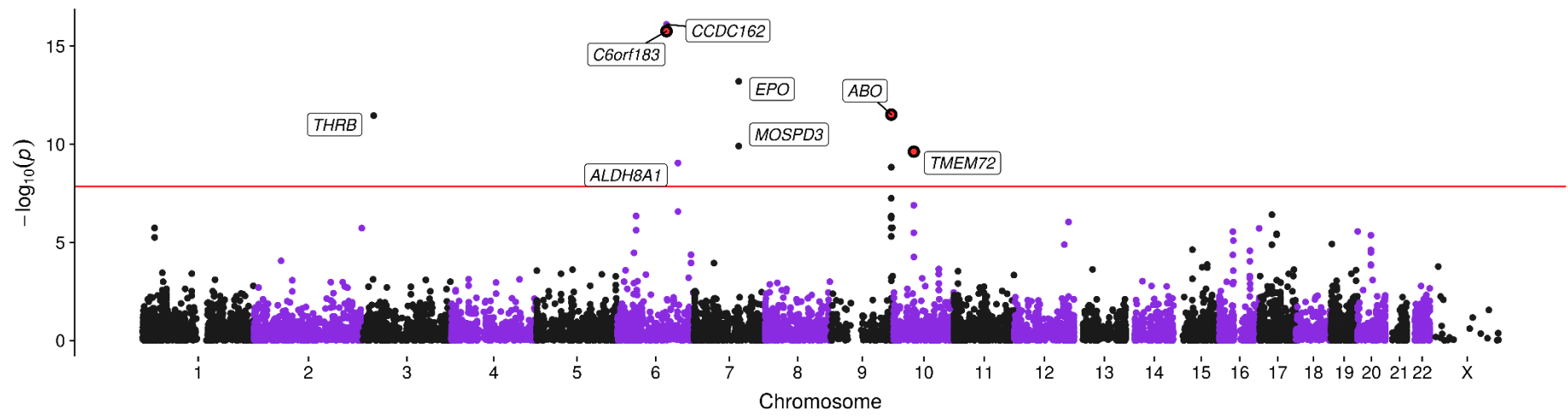
Packed cell volume



Platelet count

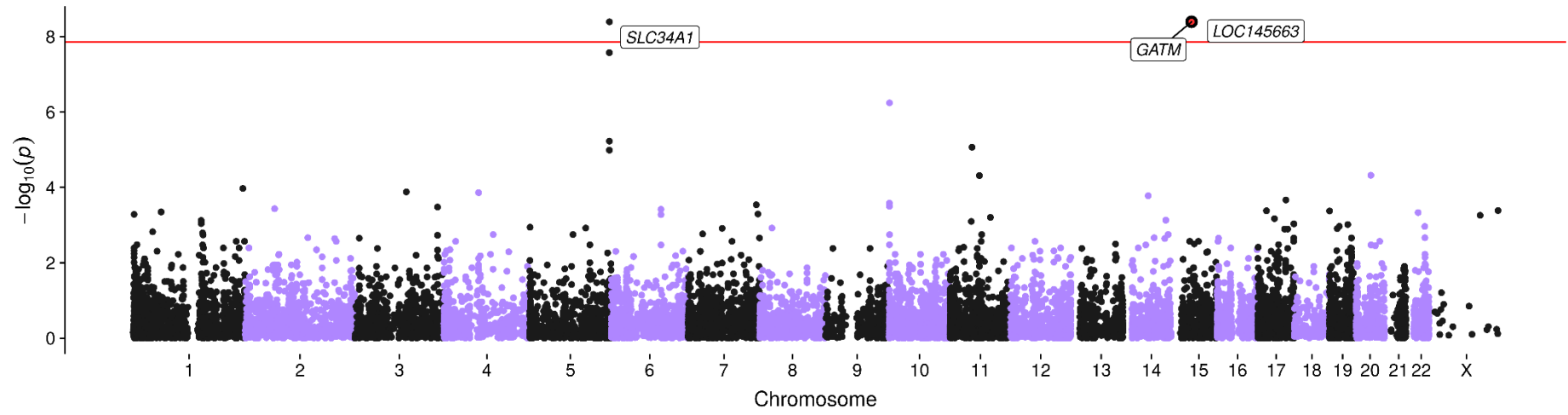


Red blood cell count

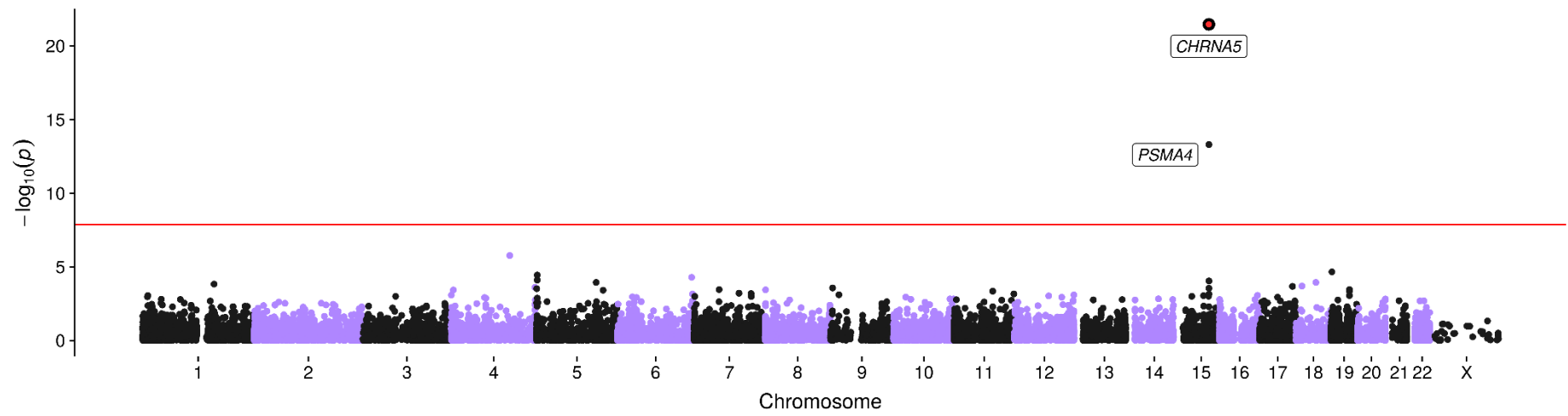


Kidney

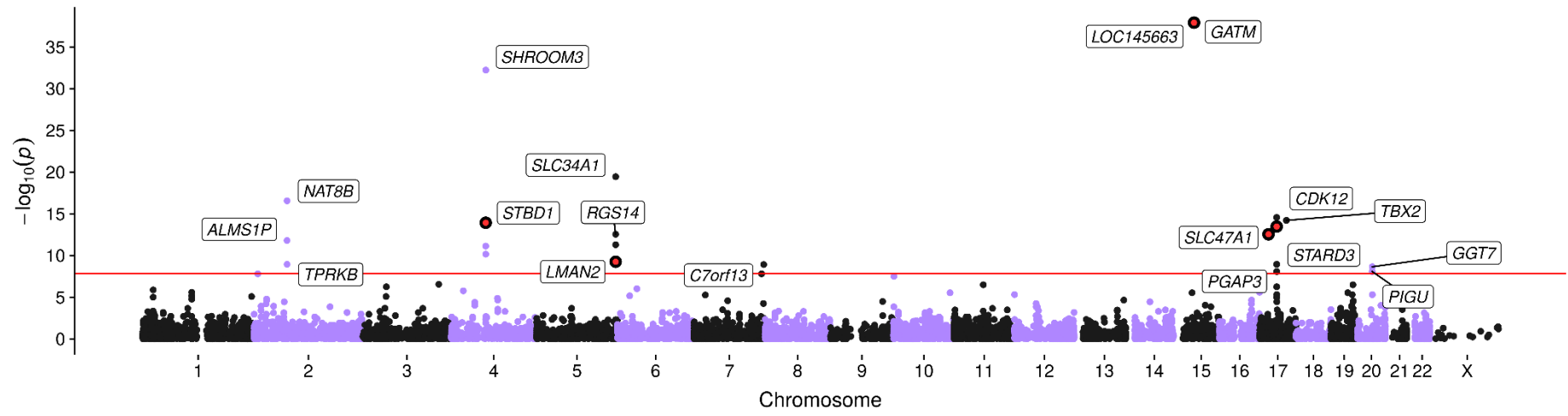
Chronic kidney disease



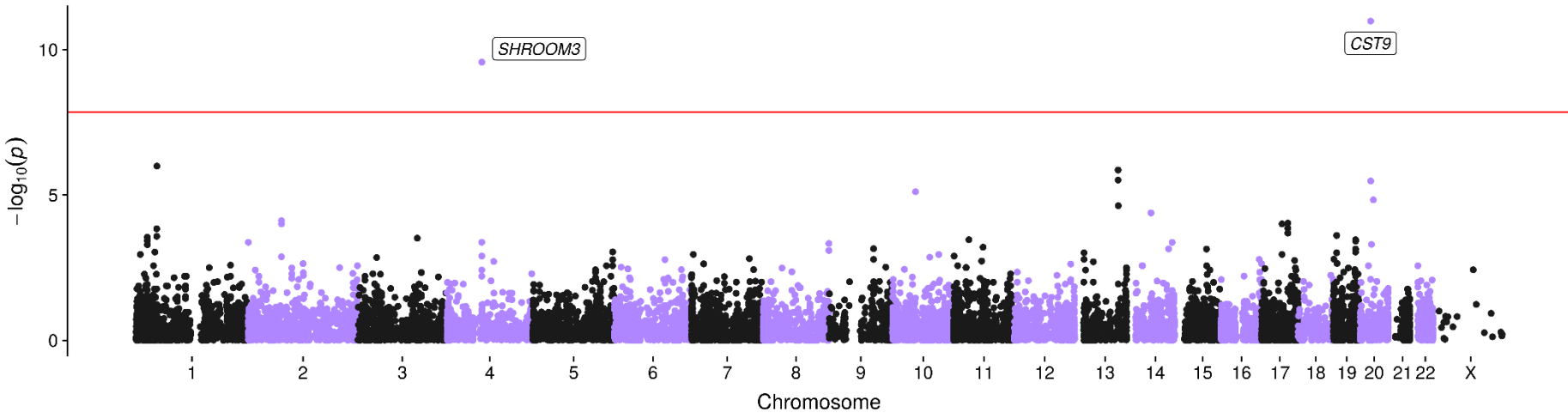
Microalbuminuria



Serum creatinine

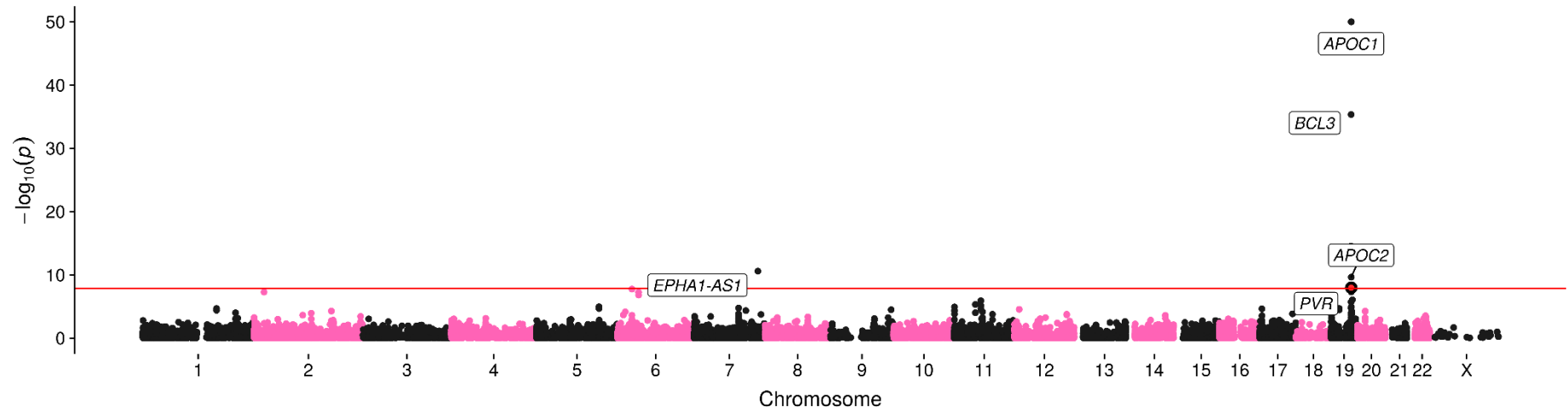


Serum cystatin C

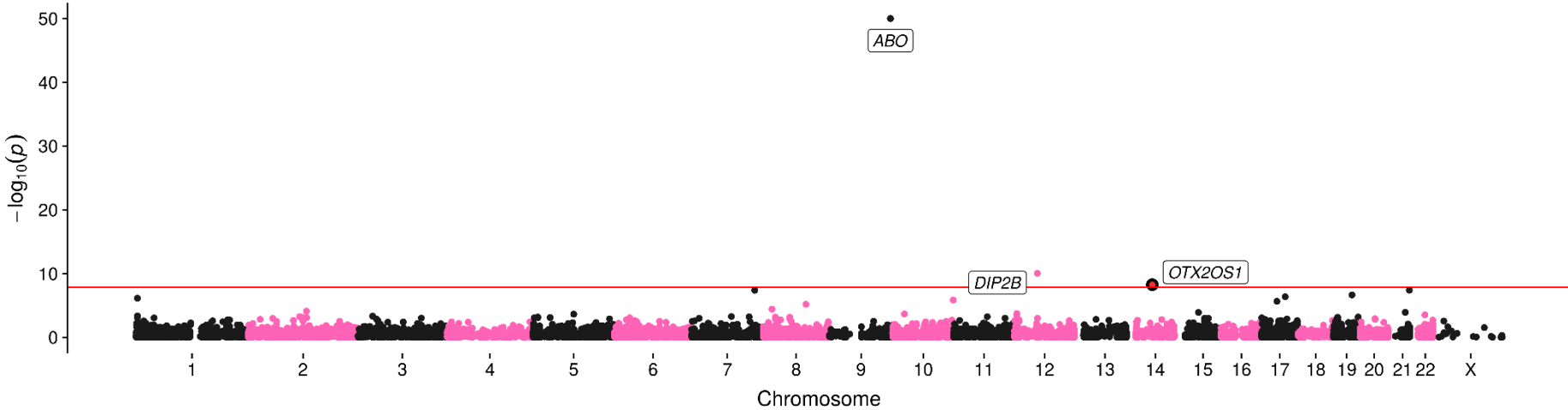


Psychiatric / neurological

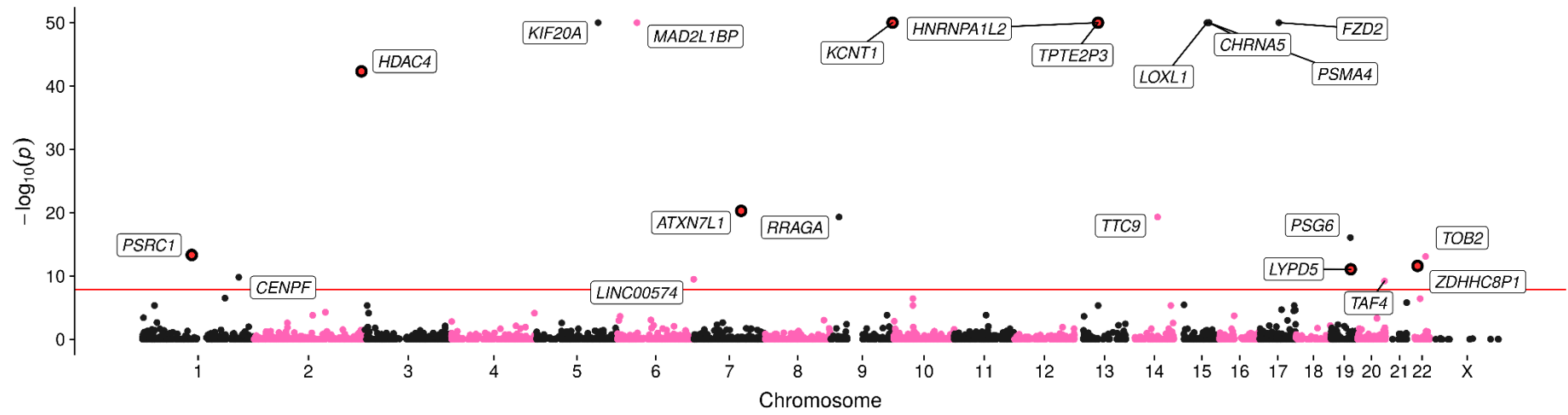
Alzheimer's disease



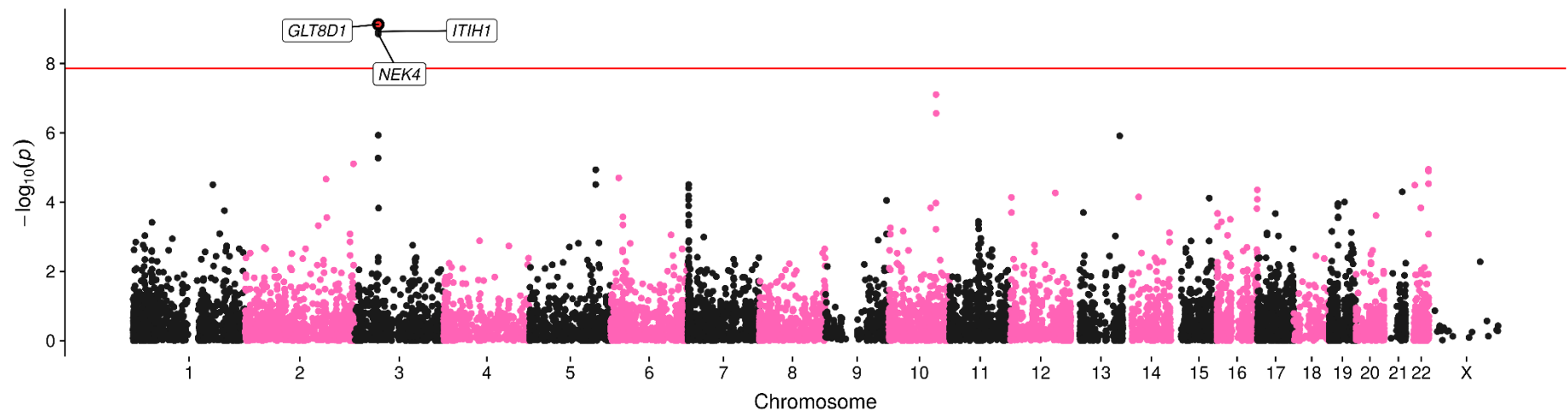
Anorexia nervosa



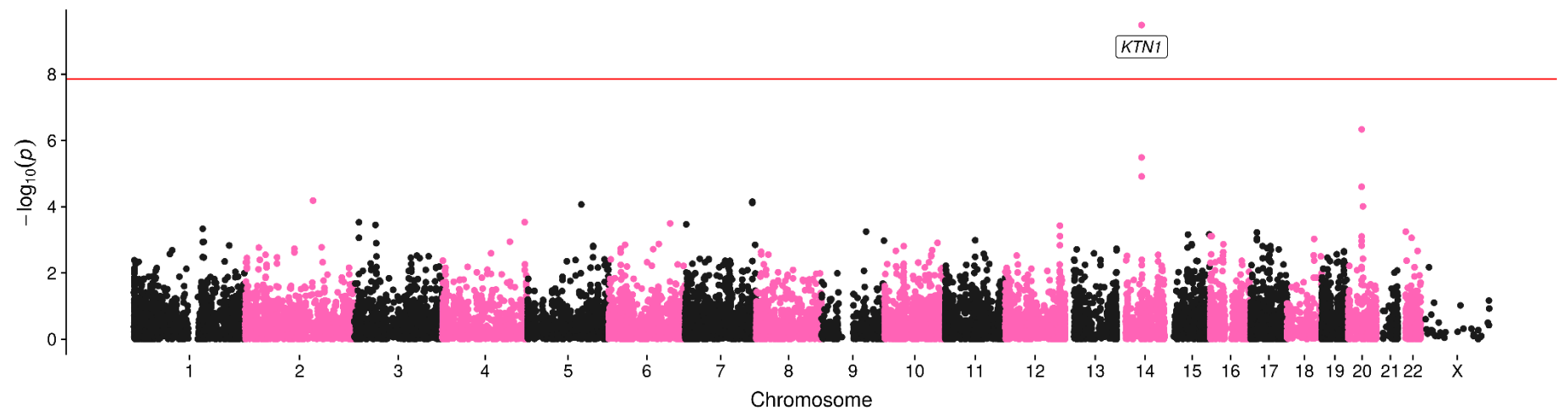
Parkinson's disease



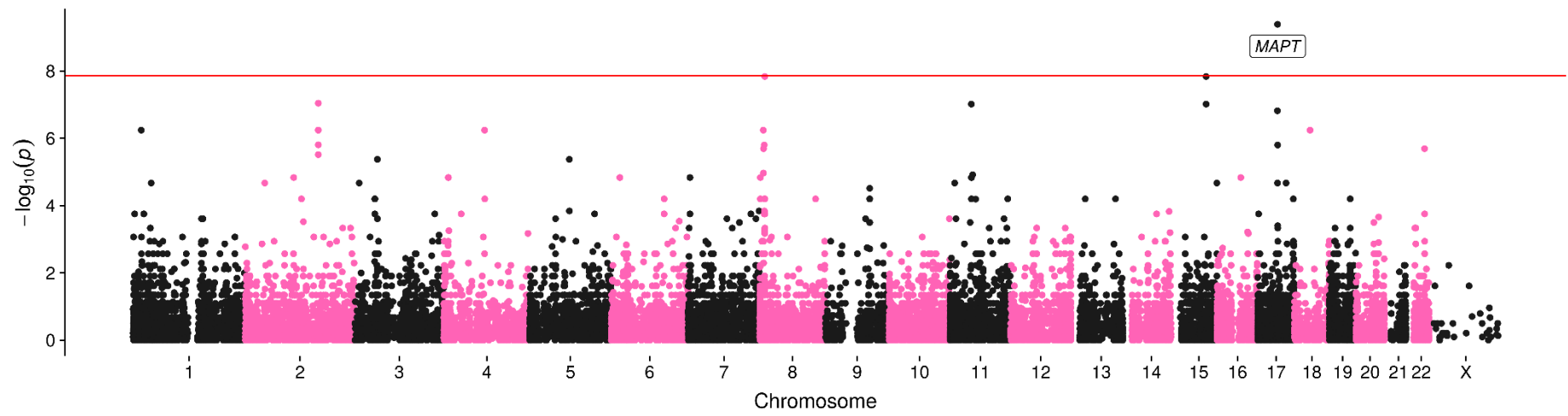
PGC cross-disorder traits



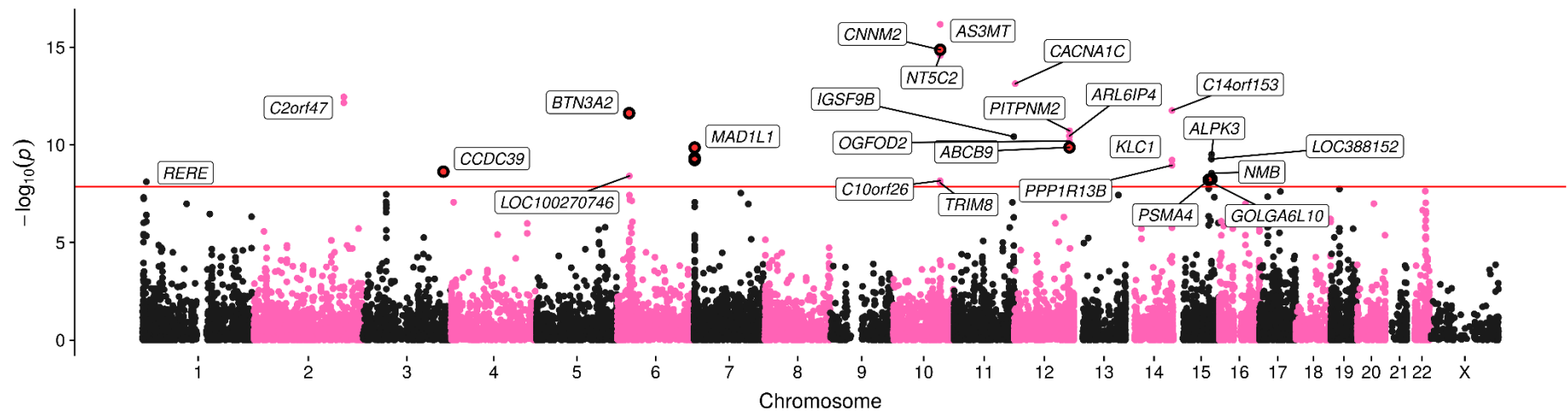
Putamen volume



Neuroticism

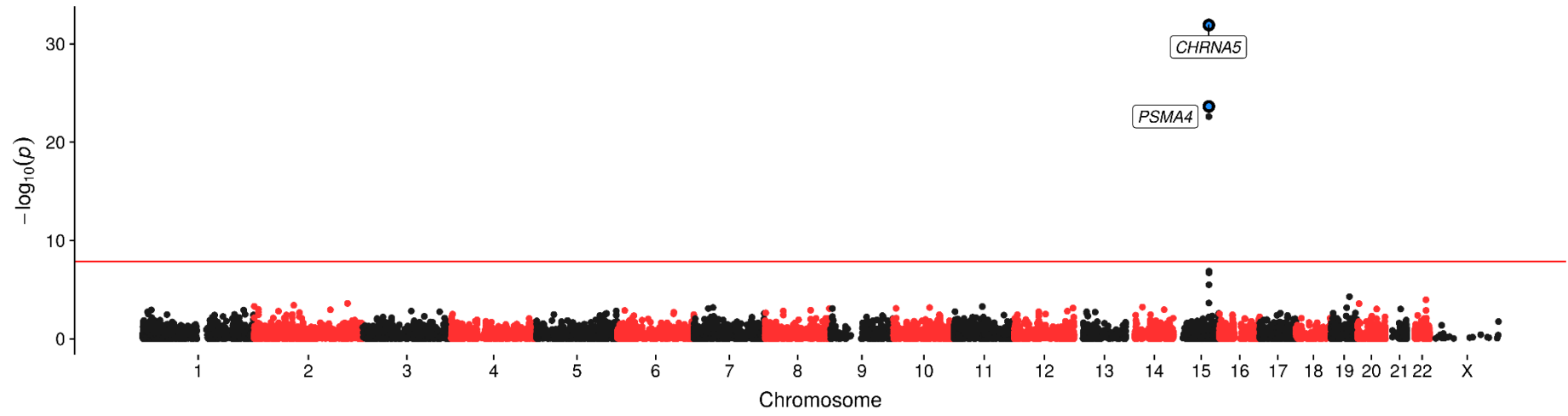


Schizophrenia

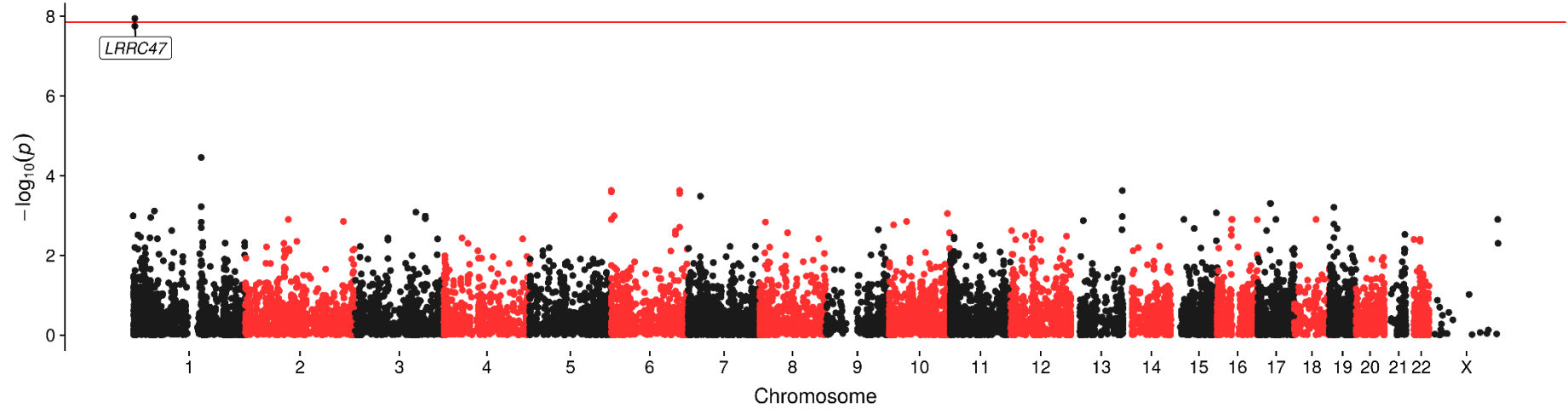


Other

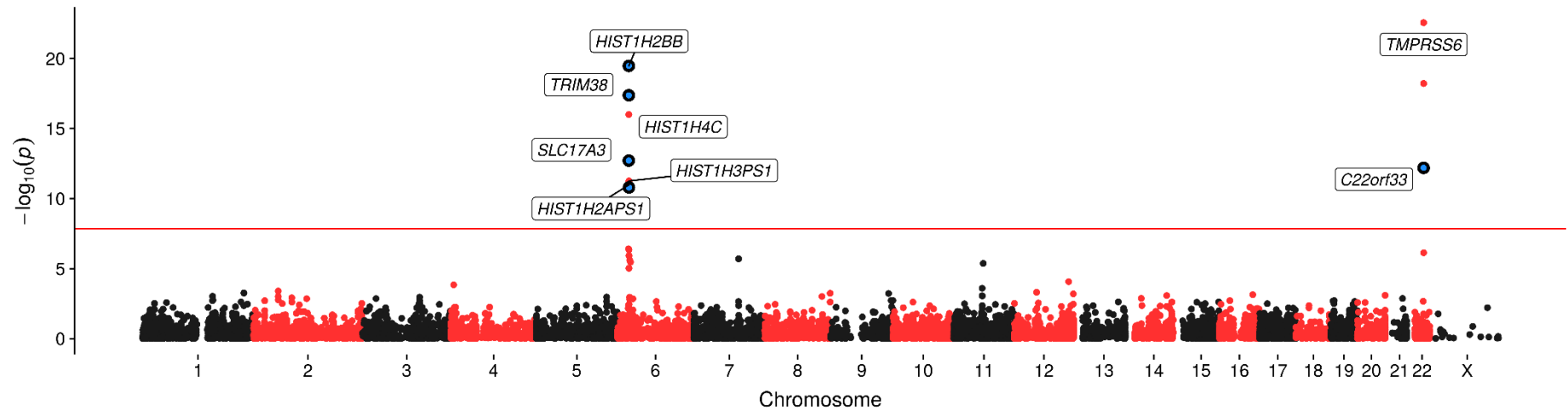
Cigarettes smoked per day



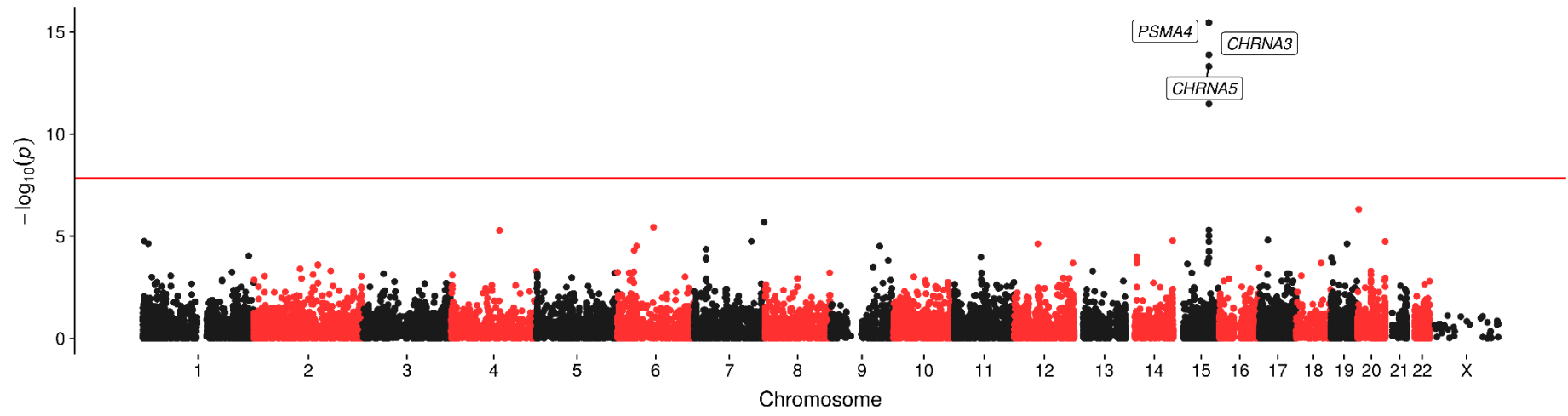
Copper



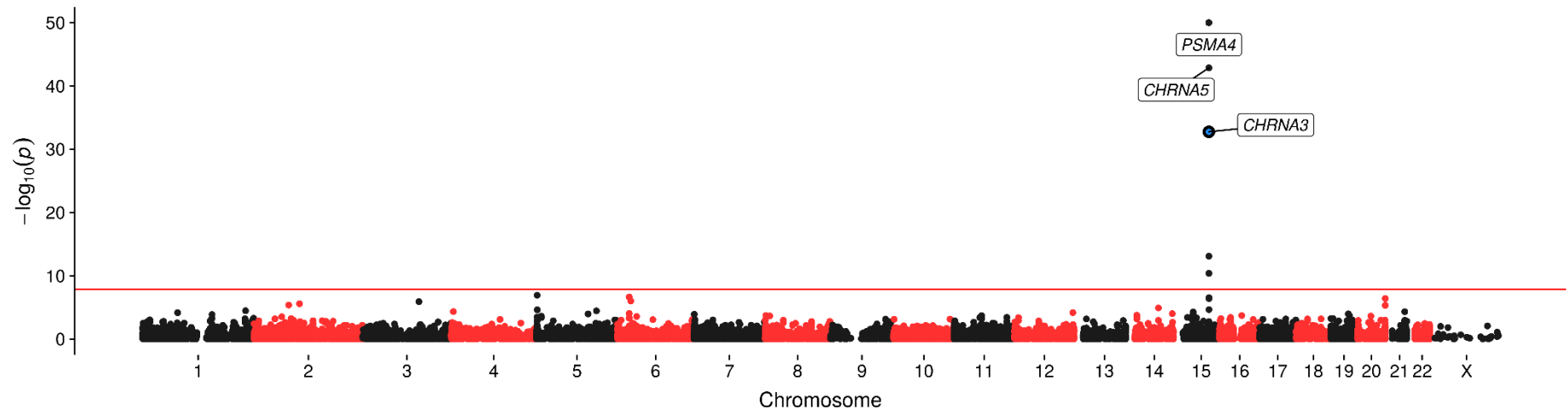
Iron



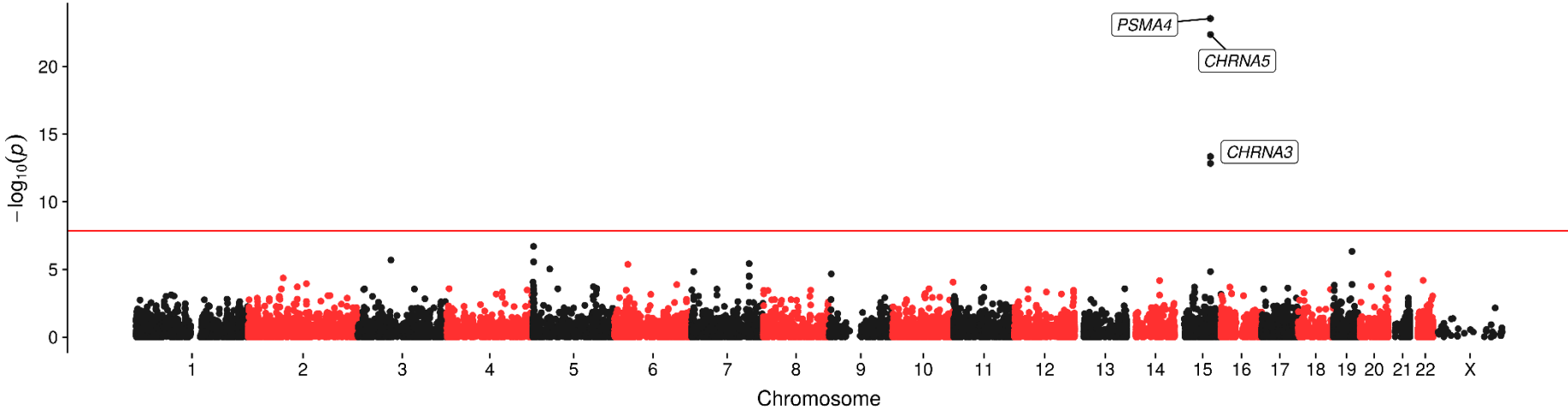
Lung adenocarcinoma



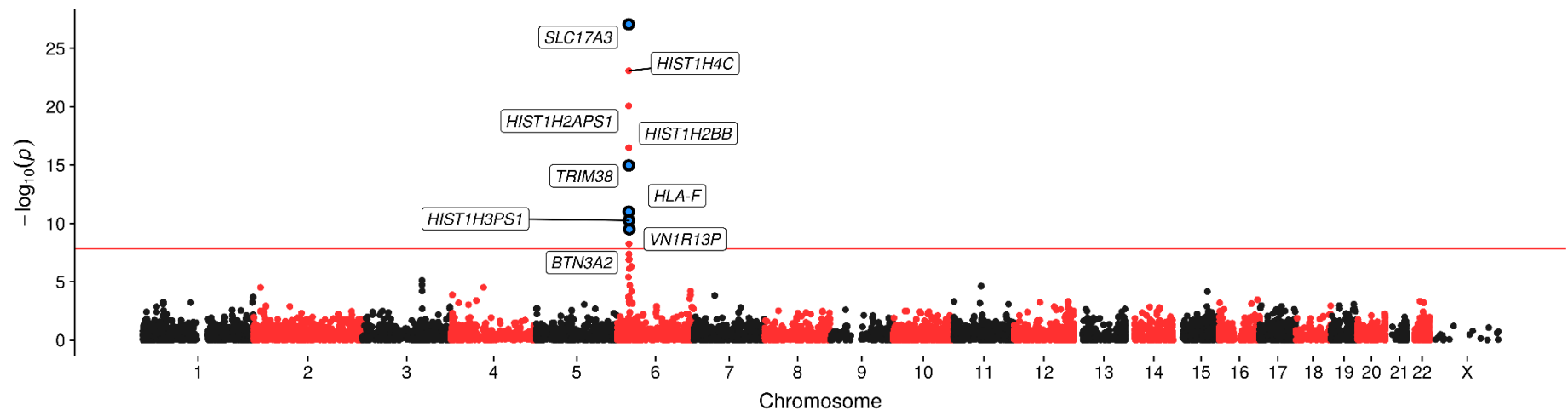
Lung cancer



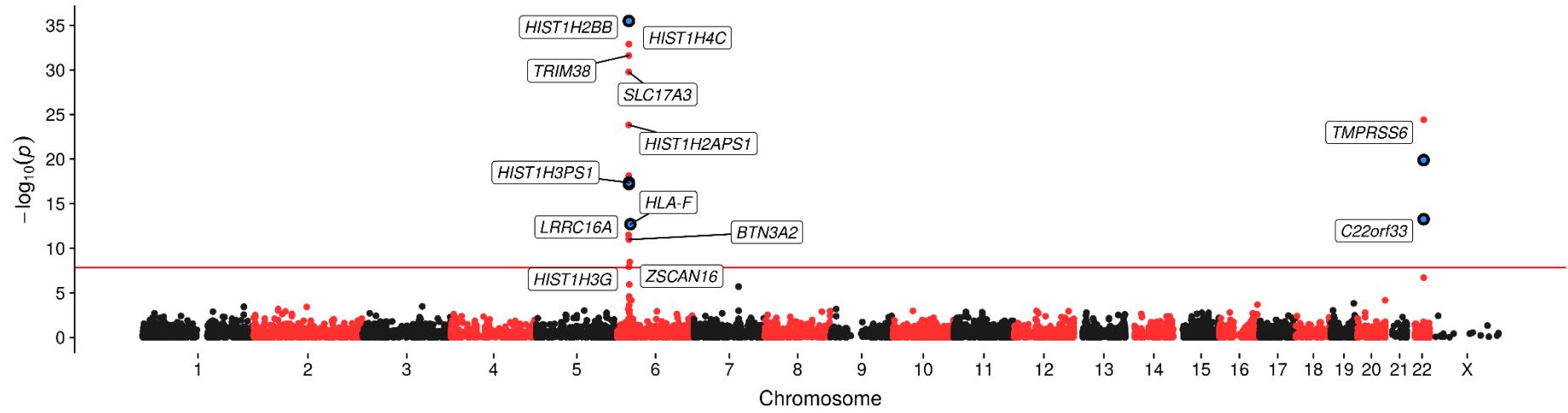
Squamous cell lung cancer



Transferrin



Transferrin Saturation



Urate

