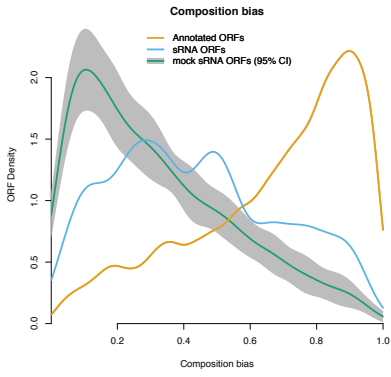
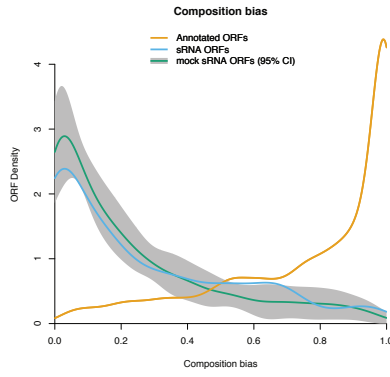


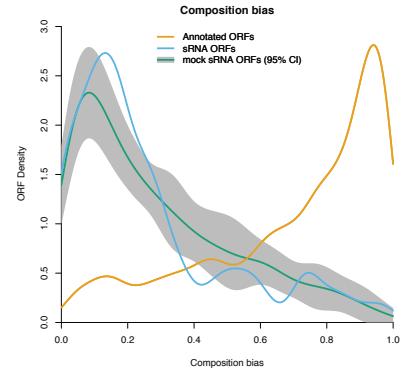
*Bacillus subtilis* subsp. *subtilis* str. 168 :



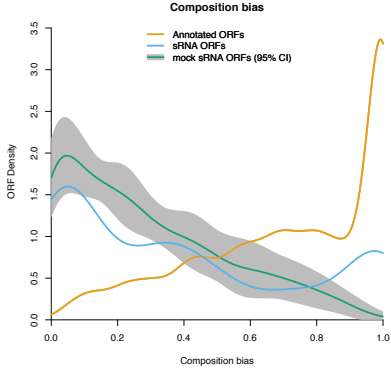
*Clostridium acetobutylicum* ATCC 824 :



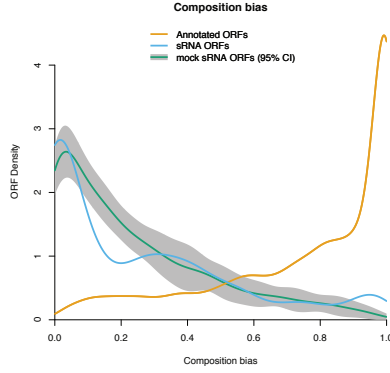
*Escherichia coli* str. K-12 substr. MG1655 :



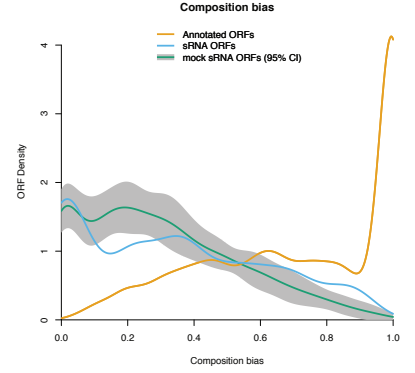
*Helicobacter pylori* 26695 :



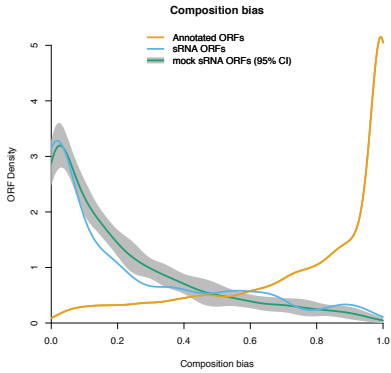
*Listeria monocytogenes* EGD-e :



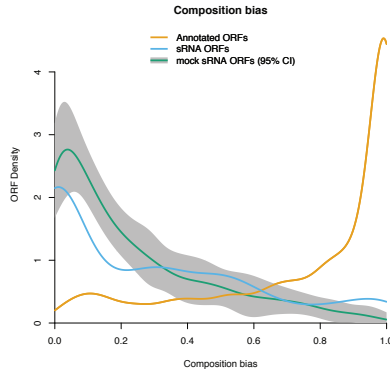
*Legionella pneumophila* subsp. *pneumophila* str. Philadelphia 1 :



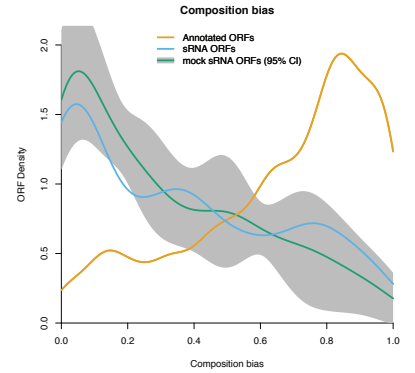
*Staphylococcus aureus* subsp. *aureus* N315 :



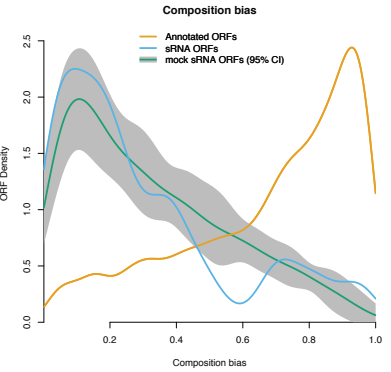
*Staphylococcus aureus* subsp. *aureus* NCTC 8325 :



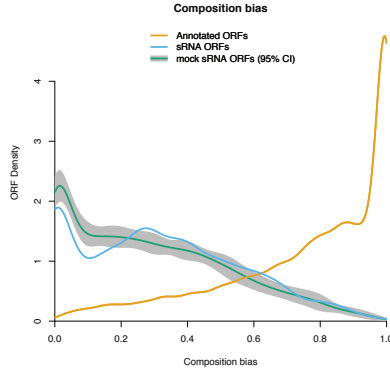
*Streptomyces coelicolor* A3(2) :



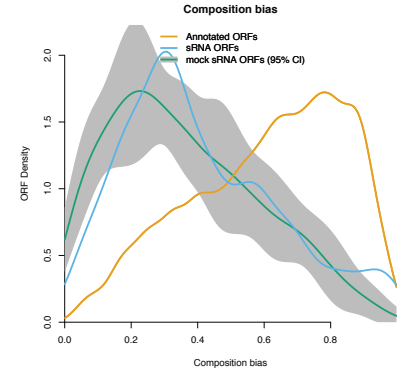
*Salmonella enterica* subsp. *enterica* serovar Typhimurium str. SL1344 :



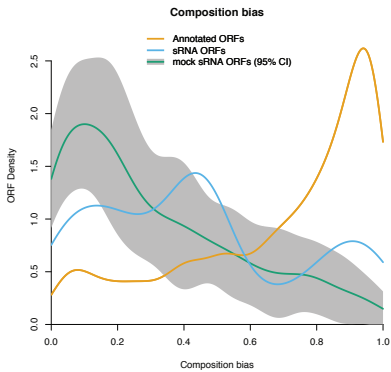
*Sinorhizobium meliloti* 1021 :



*Streptococcus pneumoniae* TIGR4 :



*Streptococcus pyogenes* MGAS5005 :



*Synechocystis* sp. PCC 6803 :

