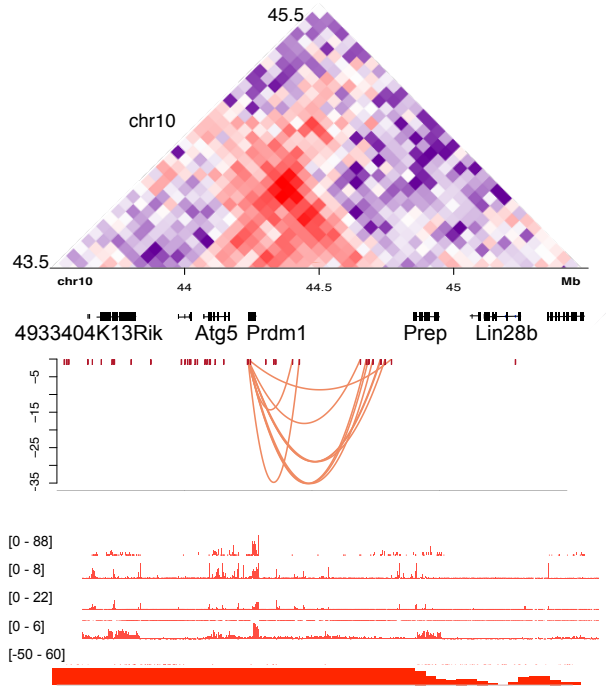
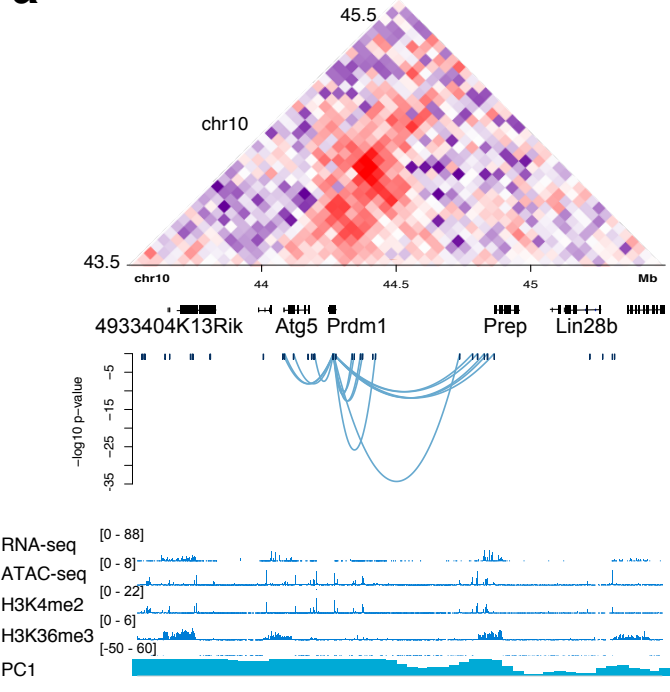


a

Naïve B

Plasma cell



Supplementary Figure 1. (a) Contact maps for chromosome 13 from 29 to 33 Mb at 100kb resolution for naïve B cells and plasma cells. (b) Contact maps for chromosome 16 from 21 to 27 Mb at 100kb resolution for naïve B cells and plasma cells. (c) Contact maps for chromosome 11 from 3 to 8 Mb at 100kb resolution for naïve B cells and plasma cells. (d) Contact maps for chromosome 4 from 43 to 49 Mb at 100kb resolution for naïve B cells and plasma cells. (e) Contact maps for chromosome 11 from 43 to 48 Mb at 100kb resolution for naïve B cells and plasma cells (left). RNA level of *Ebf1* in naïve B cells and plasma cells (right). (f) Contact maps for chromosome 10 from 43 to 48 Mb at 100kb resolution for naïve B cells and plasma cells (left). RNA level of *Prdm1* in naïve B cells and plasma cells (right).

Supplementary Figure 2. (a) Contact maps for chromosome 15 from 78 to 82 Mb at 100kb resolution for naïve B cells and plasma cells (left). RNA level of *Atf4* in naïve B cells and plasma cells (right). Sushi plot zooming in on the *Atf4* locus from 80.0 to 80.9 Mb (bottom). (b) Contact maps for chromosome 15 from 61 to 64 Mb at 100kb resolution for naïve B cells and plasma cells (left). RNA level of *Myc* in naïve B cells and plasma cells (right). Sushi plot zooming in on the *Myc* locus from 61.2 to 63.5 Mb (bottom). (c) Contact maps for chromosome 3 from 51 to 53 Mb at 100kb resolution for naïve B cells and plasma cells (left). RNA level of *Foxo1* in naïve B cells and plasma cells (right). Sushi plot zooming in on the *Foxo1* locus from 51.2 to 53.3 Mb (bottom).

Supplementary Figure 3. (a) Contact map for chromosome 10 from 43.5 to 45.5 Mb at 100 kb resolution. Gene tracks from refseq. Sushi plot showing the interaction between the *Prdm1* promoter and ATAC peaks in the target region. IGV tracks of RNA-seq, ATAC-seq, H3K4me2, and H3K36me3 for naïve B cells (left) or plasma cells (right).